

# Industrial Automation Portfolio

## Product Line Card

## North America



**Weidmüller** 

# Weidmuller Catalogs at a Glance

## Catalog 1: Modular Terminal Blocks

- P-Series (Push-in)
  - I-Series (IDC)
  - Power Distribution Blocks and Fuse Blocks
  - Stud Style (Screw clamp)
  - Z-Series (Tension clamp)
  - W-Series (Screw clamp)
- 

## Catalog 2: PCB Terminals and Connectors

- Space Saving Technologies
  - Wide Variety of Clamping Technologies
  - Pitches Ranging from 3.50 mm to 15.00 mm
  - Orientations Ranging from 90° to 270°
- 

## Catalog 3: RockStar®- Heavy Duty Connectors

- Inserts
  - Modular System
  - Housings IP65 and IP68
  - Cable Glands
- 

## Catalog 4.1: Analog Signal Conditioning

- Intrinsically Safe Conditioners
  - Signal Converters and Monitoring Devices
  - Indicators and Configurable Displays
  - Fieldbus Distribution Boxes
- 

## Catalog 4.2: Relays and Optocouplers

- Mechanical Relays
  - Solid-State (opto) Relays
  - Power Solid-State Relays
  - Multifunction Relays and Timers
- 

## Catalog 4.3: Power Delivery

- Power Supplies
  - UPS control units/battery back up units
  - AC outlet DIN-Rail Mountable Receptacles
- 

## Catalog 4.4: Surge Protection

- Surge Protection for Low-Voltage
  - Surge Protection for Instrumentation and Control
  - Surge Protection for Data Interfaces
  - Surge Protection for Photovoltaic Systems
- 

## Catalog 5: Enclosures and Cable Glands

- Enclosures
- Cable Glands
- Cabtite (Cable Entry System)

## Catalog 4.5: Interface Units and PLC Solutions

- Interface Units
  - PLC Interfaces – H-, R- and S-System
  - Byte Precabing Solution
- 

## Catalog 6: Tools

- Cutting
  - Stripping
  - Crimping
  - Screwdrivers
  - Automatic Machines
  - Ferrules
- 

## Catalog 7: Marking Systems

- Terminal Markers
  - Wire and Cable Markers
  - Device and Equipment Markers
  - Printing Systems and Software
- 

## Catalog 8: Sensor Actuator Interface

- SAI Passive Blocks
  - SAI Universal
  - SAI ASI
  - Cables and Connectors
  - JACKPAC® IP67
- 

## Catalog 9: Industrial Ethernet

- Unmanaged Switches
  - Managed Switches
  - Routers
  - Media Converters
  - SteadyTEC®
  - IE Connectors
  - Accessories
- 

## Catalog 10: Industrial Connectivity

- Short Form Catalog
  - Product Overview
- 

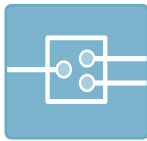
## Catalog 11: Circuit and Surge Protection

- Circuit Breakers
  - Overvoltage Protection
  - AC Receptacles
  - GFCI Outlets
- 

## Catalog 12: Wireless Connectivity Solutions

- Wireless I/O and Ethernet
- Wireless Gateways
- Wireless Transceivers
- Antennas and Accessories

# Industrial Connectivity Portfolio



## POWER

### Stud Terminal Blocks

- IEC finger safe design with integrated hinged covers
- UL/CSA rated for 1000V/85-500A/14AWG-600MCM
- Power distribution via 2 and 3 pole bus bars
- Vibration resistant; fixed washer/nut assembly
- Over 15 configurations available



Catalog 1: Modular Terminal Blocks

### AC and DC Power Monitoring

- For voltage distribution or load monitoring
- Single or 3-phase voltages
- AC current up to 500A
- Isolated analog or relay outputs
- cULus and Class/Div approvals



Catalog 4.1: Analog Signal Conditioning



## SIGNAL

### Terminal Blocks

- Global approvals: UL, CSA, IEC, Gost
- Screw, tension, push-in and IDC terminations
- UL 508A SCCR approved
- Fuse, feedthrough, ground, disconnect
- Self-locking screw clamp system



Catalog 1: Modular Terminal Blocks

### Fuse Terminal Blocks

- 5 x 20/25mm, 1 1/4" x 1/4", 13/32" x 1 1/2" and midget
- Blown fuse indication
- Low leakage terminals (0.5 mA)
- 100% vibration resistant
- Self-locking screw clamp system



Catalog 1: Modular Terminal Blocks



## DATA

### Connecting and Patch Cables

- Cat 5e, 6, 7 and PROFINET (RJ45 and M12)
- Fiber optic cables SC, ST
- Bulk cable and assembled cables
- PUR, PVC jacket options
- Shielded or unshielded



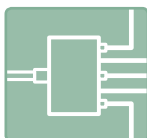
Catalog 9: Industrial Ethernet

### Industrial Ethernet Switches

- Managed and unmanaged
- GigE and POE
- Support copper (RJ45)
- Fiber optic (SC, ST, LC)
- With relay status contacts
- Metal and plastic housings



Catalog 9: Industrial Ethernet



## FIELD

### RockStar® Heavy Duty Connectors

- Individual piece parts packaging
- IP 65 ingress protection
- Screw, Tension, PUSH-IN and IDC terminations
- NEMA 4/4X approved
- Stainless steel latches
- Laser etched part numbers



Catalog 3: RockStar® Heavy Duty Connectors

### Stainless and Mild Steel Painted Enclosures

- ATEX, IECEx, UL50, UL Ex
- IP66 ingress protection (NEMA 4/4X)
- High temp gaskets -50° C to +135° C
- 1 to 4 gland plate configurations
- 316L stainless steel - 304 mild steel painted



Catalog 5: Enclosures and Cable Glands

For hazardous locations, we offer solutions that include the following agency approvals:



## Power Distribution Blocks

- UL 508A SCCR approved
- IEC finger safe
- Single and 3-phase configuration options
- Aluminum and copper conductor acceptance
- TS35 DIN-rail or direct mountable



Catalog 1: Modular Terminal Blocks

## Power Supplies

- Ranges from 0.5A to 40A
- Redundancy options
- AC and DC input voltages
- Single and 3-phase versions
- UPS Control units/ Battery backup units
- DC-to-DC converters



Catalog 11: Circuit and Surge Protection

## Circuit Protection

- Miniature circuit breaker
- Numerous trip curves
- Overcurrent protection
- Thermal and hydraulic solutions
- Electronic protectors
- AC and DC protection



Catalog 11: Circuit and Surge Protection

## Interface Solutions

- PLC/DCS specific pre-assembled cables
- Integrated components (fuses, disconnect)
- Compact and space saving
- 1-wire, 2-wire and 3-wire



Catalog 4.5: Interface Units & PLC Protection

## Mechanical and Solid-State

- From 6.1mm
- Up to 4 pole c/o
- Finger-safe connections
- Long life
- Inductive loads
- High frequencies
- Hazardous approval



Catalog 4.5: Interface Units & PLC Protection

## Signal Conditioners

- All sensor inputs
- All common outputs
- Hazardous approvals
- Front panel display options
- Wide ambient temperature
- DIP and computer configurable



Catalog 4.1: Analog Signal Conditioning

## SteadyTEC® Ethernet

- Modular system
- 10-Gig rated
- Copper and fiber
- Field installable
- Plastic and metal versions
- Industry variants 1, 4 and 5



Catalog 9: Industrial Ethernet

## Media Converters

- Fully transparent
- Fiber to copper (RJ45), (SC or ST)
- Singlemode and Multimode
- Transmission up to 60 kms
- Serial to Fiber-optic converters



Catalog 9: Industrial Ethernet

## Wireless Ethernet

- 5.8GHz
- 2.4GHz (WiFi)
- 900MHz FHSS
- Access Point/Client; Bridge/Router
- 2+ mile range (2.4GHz)
- 20+ mile range (900 FHSS)



Catalog 12: Wireless Connectivity Solutions

## Through-Wall Wire Systems – Cabtite (KVT and KEL)

- Configurable Frames for multiple wire routing requirements
- Maintains IP54 (NEMA 4)
- For round cable from 0.12"-1.34" and ASI cable
- Offers integral strain relief
- Accommodates 40 wires in 4.33"



Catalog 10: Industrial Connectivity

## Sensor Actuator Interface (SAI)

### Distribution Blocks

- Mounting hood, integrated control cable or on-board connector

- M5, M8 and M12

### Fieldbus Modules

- Analog input/output modules



Catalog 8: Sensor Actuator Interface

## Sensor Actuator Cordsets

- M5, M8, M12, M23 and 7/8"
- High flex for > 20 Million Cycles
- Weld slag resistant high flex robotic cables
- Fully shielded
- Field installable connectors
- Valve plug versions



Catalog 8: Sensor Actuator Interface



## Surge Protection

- For nominal voltages 120V to 600V
- Discharges up to 40kA (8/20 $\mu$ s)
- 1, 2 and 3 phase configurations
- UL1449 Edition 3 approved
- Integral thermal disconnects
- Pluggable replaceable SPD elements
- Local and remote SPD status indication



Cat. 4.4: Surge Protection & Cat. 11: Circuit and Surge Protection

## AC Receptacles

- Simplex and duplex
- GFCI
- UL508A approvals
- Assembly-free
- DIN-Rail or panel mountable



Catalog 11: Circuit and Surge Protection

## Signal Isolators

- Digital and analog signals
- 2, 3 and 4 wire models
- 2-channel models and splitters
- Ex isolating barriers (IS)
- HART transparent options
- Configurable input/output
- From 6mm wide per unit



Catalog 4.1: Analog Signal Conditioning

## Surge Protection

- For analog, status and network signals
- Discharges up to 20kA (8/20 $\mu$ s)
- Pluggable, replaceable SPD versions
- Local and remote status indication
- SPD element testing option
- Single, multi-stage and floating signal protection
- Integrated ground contact in base element



Cat. 4.4: Surge Protection & Cat. 11: Circuit and Surge Protection

## Wireless I/O

- 900MHz FHSS
- Transceiver and unidirectional units
- Full 1W of broadcast power
- Modular I/O design
- 20+ mile range
- Meshing and self healing networks



Catalog 12: Wireless I/O and Ethernet Connectivity

## Antennas and Accessories

- Omni and Directional
- Mounting brackets
- Bulkhead adapters
- Surge arrestors
- Patch cables (SMA and N type)



Catalog 12: Wireless I/O and Ethernet Connectivity

## PCB Solutions – OMNIMATE Terminals and Connectors

### Power

#### 12.70mm & 15.00mm

- Wire Size: 26 – 1 AWG
- Max. Current: 127 Amps



#### 10.00mm & 10.16mm

- Wire Size: 26 – 6 AWG
- Max. Current: 65 Amps



#### 7.50mm & 7.62mm

- Wire Size: 26 – 10 AWG
- Max. Current: 35 Amps



### Signal

#### 5.00mm & 5.08mm

- Wire Size: 26 – 12 AWG
- Max. Current: 20 Amps



#### 3.50mm & 3.81mm

- Wire Size: 28 – 14 AWG
- Max. Current: 10 Amps



Catalog 2: PCB Terminals and Connectors

## Housings

### Series – CH20M

- Scalable connection levels
- Touch proof connection on plug and receptacle sides
- Marking tabs for connectors and front cover
- Multiple color options
- Integrated coding with unique "Autoset" function
- Widths from 6mm to 67.5mm
- Rail mounting bus option



Catalog 2: PCB Terminals and Connectors





## TOOLS

### Cutting

Cut copper and aluminum cables and wire up to 1260 kcmil

#### KT 12

- Cuts wire up to 2 AWG
- Blade shape prevents wire distortion

#### AM 12

- Cuts and strips UTP and STP data cables up to 11 AWG



### Screwdrivers

Available with standard or VDE insulated handle.

- Hardened high-alloy steel tips
- Soft-finish grip handles for comfortable handling



### Stripping

Quick and accurate stripping with no damage to single conductors

#### Stripax®

- Strips and cuts flexible conductors from 20...10 AWG

#### AM 25

- Strips PVC insulated cables, 0.18" ... 1.0" diameter
- Lengthwise or spiral cuts



### Crimping

Precise crimp with minimal force

#### Stripax® Plus 2.5 – 3-in-1 Tool

- Cuts, strips and crimps linked wire ferrules from 20...14 AWG
- For PVC insulated wire

#### PZ 6 Roto

- Crimps wire-end ferrules from 24...10 AWG
- Wire insertion from side or front



### Ferrules — insulated and non-insulated

Wire end ferrules ensure a secure and reliable connection.

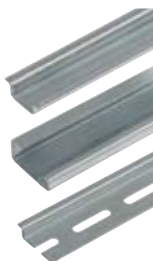
- 3 color codes available
- Loose, strips, reels and assortments from 24 AWG – 300 MCM



## DIN-RAIL

### Mountable DIN-Rail

- Rail sizes: TS 15/32/35
- Material: Steel, stainless steel, copper and aluminum
- Rail types: solid, slotted, Hi-Rail, shallow and deep



## Accessories

## Catalog 6: Tools



## MARKING SYSTEMS

### Printing Systems

#### MCP Plotter

- Print over 160 MultiCard types quickly and easily, using Weidmuller's M-Print Pro® software

#### PrintJet ADVANCED

- Weidmuller's industry-leading marking system
- First full color printer for MultiCard markers
- Print on plastic or metal cards



### Marker Format Types

#### Terminal Markers

- Terminal blank identifiers for Weidmuller terminals and other manufacturers' terminals



#### Wire and Cable Markers

- Transparent cover
- Slip-on and clip-on
- Stainless steel



#### Device Markers

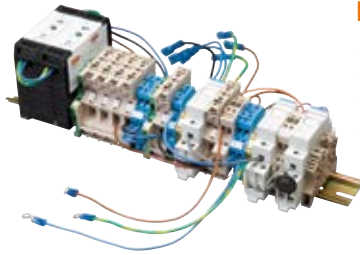
- Placard
- Actuator and contactor
- Switch and push button



## Catalog 7: Marking Systems

# Design – Build – Deliver

## Engineered Solutions



### Rail Assemblies

- DIN-rail assemblies
- Customized marking options
- Wired and tested assemblies
- Product kitting and bundling



### Custom Electronics

- Assembled electronic modules
- Design and production prototypes
- RoHS compliant compatibility
- cRUus certifications



### Engineered Enclosures

- ATEX, UL, CSA and NEMA certifications
- Wireless assemblies
- Custom junction boxes
- Design, assembly and wired solutions
- Combiner boxes for photovoltaic systems



### Spec it Once –

- In house engineering services
  - Electrical
  - Electro – Mechanical
  - Agency Approvals
  - Application Specific Engineering
- Lower total cost of ownership



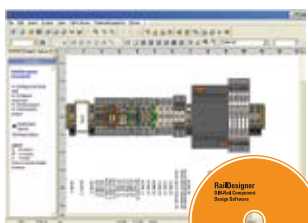
### Wireless in a Box

- Versions for quick and easy deployment of wireless Ethernet
- Versions for fast installation of multi-point wireless direct I/O
- NEMA 4X outdoor rated stainless steel and plastic enclosures



### Speedline®

- Product delivery service
- Heavy duty connectors and cable gland kits
- All products ship in 48 hours
- All components individually sealed
- Inserts and housings compatible with other manufacturers' products



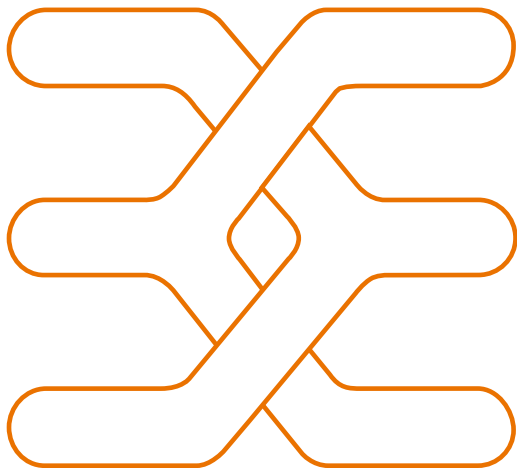
### Rail Designer

- DIN-rail component design software
- Custom design in 2D and 3D imaging
- Enclosure design software
- Various product export formats (i.e. DXF, DWG, STEP, etc.)



### Product Configuration/Selection Software

- Competitive cross reference database
- Configure custom PCB's, rectangular connectors, Ethernet cabling and connectors, SAI cordsets and connectors



Weidmuller is the leading manufacturer of components for electrical connection technology to transmit energy, signals and data. The Weidmuller product portfolio ranges from terminal blocks, PCB connectors and terminals, protected components, Industrial Ethernet components, I/O components and relay sockets to power supplies and overvoltage protection modules suitable for all applications. Assemble Services, marking solutions with a variety of tools and software systems, round off the range. As an OEM supplier, the company sets global standards in the field of electrical connection technology.

**Weidmuller, Canada**

10 Spy Court  
Markham, Ontario L3R 5H6  
Telephone: (800) 268-4080  
Facsimile: (877) 300-5635  
Email: [info1@weidmuller.ca](mailto:info1@weidmuller.ca)  
Website: [www.weidmuller.ca](http://www.weidmuller.ca)

**Weidmuller, Mexico**

Bld. Hermanos Serdán 698,  
Col. San Rafael Oriente  
Puebla, Puebla, Mexico  
C.P. 72029  
Telephone: 01 222 2686267  
Facsimile: 01 222 2686219  
Email: [clientes@weidmuller.com.mx](mailto:clientes@weidmuller.com.mx)  
Website: [www.weidmuller.com.mx](http://www.weidmuller.com.mx)

**Weidmuller, United States**

821 Southlake Blvd.  
Richmond, Virginia 23236  
Telephone: (800) 849-9343  
Facsimile: (804) 379-2593  
Email: [info@weidmuller.com](mailto:info@weidmuller.com)  
Website: [www.weidmuller.com](http://www.weidmuller.com)

# Let's Connect

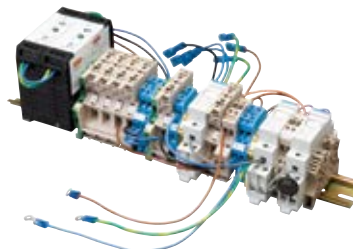
[www.weidmuller.com](http://www.weidmuller.com)

# Weidmüller



# Design – Build – Deliver

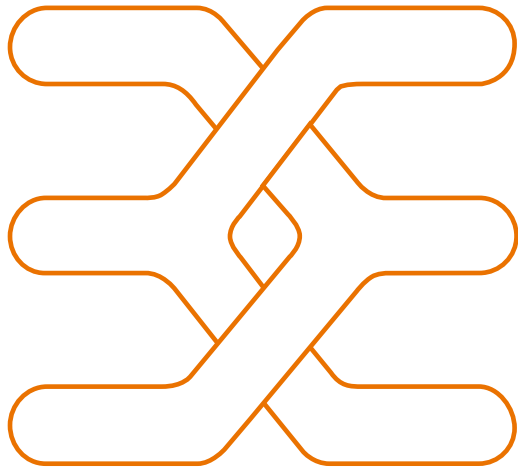
## Engineered Solutions



- Rail Assemblies**
- DIN-rail assemblies
  - Customized marking options
  - Wired and tested assemblies
  - Product kitting and bundling



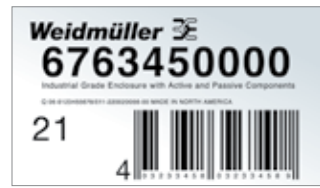
- Custom Electronics**
- Assembled electronic modules
  - Design and production prototypes
  - RoHS compliant compatibility
  - cRUus certifications



- Spec it Once –**
- In house engineering services
    - Electrical
    - Electro – Mechanical
    - Agency Approvals
    - Application Specific Engineering
  - Lower total cost of ownership



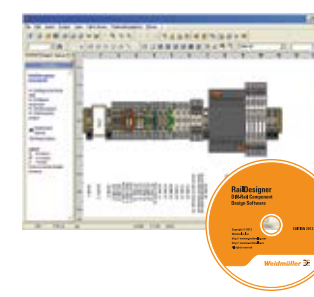
- Engineered Enclosures**
- ATEX, UL, CSA and NEMA certifications
  - Wireless assemblies
  - Custom junction boxes
  - Design, assembly and wired solutions
  - Combiner boxes for photovoltaic systems



- Speedline®**
- Product delivery service
  - Heavy duty connectors and cable gland kits
  - All products ship in 48 hours
  - All components individually sealed
  - Inserts and housings compatible with other manufacturers' products



- Wireless in a Box**
- Versions for quick and easy deployment of wireless Ethernet
  - Versions for fast installation of multi-point wireless direct I/O
  - NEMA 4X outdoor rated stainless steel and plastic enclosures



- Rail Designer**
- DIN-rail component design software
  - Custom design in 2D and 3D imaging
  - Enclosure design software
  - Various product export formats (i.e. DXF, DWG, STEP, etc.)



- Product Configuration/Selection Software**
- Competitive cross reference database
  - Configure custom PCB's, rectangular connectors, Ethernet cabling and connectors, SAI cordsets and connectors

**Weidmüller, Canada**  
10 Spy Court  
Markham, Ontario L3R 5H6  
Telephone: (800) 268-4080  
Facsimile: (877) 300-5635  
Email: info1@weidmuller.ca  
Website: www.weidmuller.ca

**Weidmüller, Mexico**  
Blvd. Hermanos Serdán 698,  
Col. San Rafael Oriente  
Puebla, Puebla, Mexico  
C.P. 72029  
Telephone: 01 222 2686267  
Facsimile: 01 222 2686219  
Email: clientes@weidmuller.com.mx  
Website: www.weidmuller.com.mx

**Weidmüller, United States**  
821 Southlake Blvd.  
Richmond, Virginia 23236  
Telephone: (800) 849-9343  
Facsimile: (804) 379-2593  
Email: info@weidmuller.com  
Website: www.weidmuller.com

Weidmüller is the leading manufacturer of components for electrical connection technology to transmit energy, signals and data. The Weidmüller product portfolio ranges from terminal blocks, PCB connectors and terminals, protected components, Industrial Ethernet components, I/O components and relay sockets to power supplies and overvoltage protection modules suitable for all applications. Assemble Services, marking solutions with a variety of tools and software systems, round off the range. As an OEM supplier, the company sets global standards in the field of electrical connection technology.

# Industrial Automation Portfolio

## Product Line Card

North America



# Weidmüller Catalogs at a Glance

- Catalog 1:**  
**Modular Terminal Blocks**
- P-Series (Push-in)
  - I-Series (IDC)
  - Power Distribution Blocks and Fuse Blocks

- Stud Style (Screw clamp)
- Z-Series (Tension clamp)
- W-Series (Screw clamp)

- Catalog 2:**  
**PCB Terminals and Connectors**
- Space Saving Technologies
  - Wide Variety of Clamping Technologies
  - Pitches Ranging from 3.50 mm to 15.00 mm
  - Orientations Ranging from 90° to 270°

- Catalog 3:**  
**RockStar® – Heavy Duty Connectors**
- Inserts
  - Modular System
  - Housings IP65 and IP68
  - Cable Glands

- Catalog 4.1:**  
**Analog Signal Conditioning**
- Intrinsically Safe Conditioners
  - Signal Converters and Monitoring Devices
  - Indicators and Configurable Displays
  - Fieldbus Distribution Boxes

- Catalog 4.2:**  
**Relays and Optocouplers**
- Mechanical Relays
  - Solid-State (opto) Relays
  - Power Solid-State Relays
  - Multifunction Relays and Timers

- Catalog 4.3:**  
**Power Delivery**
- Power Supplies
  - UPS control units/battery back up units
  - AC outlet DIN-Rail Mountable Receptacles

- Catalog 4.4:**  
**Surge Protection**
- Surge Protection for Low-Voltage
  - Surge Protection for Instrumentation and Control
  - Surge Protection for Data Interfaces
  - Surge Protection for Photovoltaic Systems

- Catalog 5:**  
**Enclosures and Cable Glands**
- Enclosures
  - Cable Glands
  - Cabtite (Cable Entry System)

- Catalog 4.5:**  
**Interface Units and PLC Solutions**
- Interface Units
  - PLC Interfaces – H-, R- and S-System
  - Byte Precabling Solution

- Catalog 6:**  
**Tools**
- Cutting
  - Stripping
  - Crimping
  - Screwdrivers
  - Automatic Machines
  - Ferrules

- Catalog 7:**  
**Marking Systems**
- Terminal Markers
  - Wire and Cable Markers
  - Device and Equipment Markers
  - Printing Systems and Software

- Catalog 8:**  
**Sensor Actuator Interface**
- SAI Passive Blocks
  - SAI Universal
  - SAI ASI
  - Cables and Connectors
  - JACKPAC® IP67

- Catalog 9:**  
**Industrial Ethernet**
- Unmanaged Switches
  - Managed Switches
  - Routers
  - Media Converters
  - SteadyTEC®
  - IE Connectors
  - Accessories

- Catalog 10:**  
**Industrial Connectivity**
- Short Form Catalog
  - Product Overview

- Catalog 11:**  
**Circuit and Surge Protection**
- Circuit Breakers
  - Overvoltage Protection
  - AC Receptacles
  - GFCI Outlets

- Catalog 12:**  
**Wireless Connectivity Solutions**
- Wireless I/O and Ethernet
  - Wireless Gateways
  - Wireless Transceivers
  - Antennas and Accessories

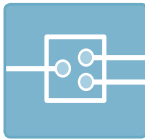
Let's Connect

www.weidmuller.com





Industrial Connectivity Portfolio



POWER

Stud Terminal Blocks

- IEC finger safe design with integrated hinged covers
- UL/CSA rated for 1000V/ 85-500A/ 14AWG -600MCM
- Power distribution via 2 and 3 pole bus bars
- Vibration resistant; fixed washer/nut assembly
- Over 15 configurations available



Catalog 1: Modular Terminal Blocks

AC and DC Power Monitoring

- For voltage distribution or load monitoring
- Single or 3-phase voltages
- AC current up to 500A
- Isolated analog or relay outputs
- cULus and Class/Div approvals



Catalog 4.1: Analog Signal Conditioning

Power Distribution Blocks

- UL 508A SCCR approved
- IEC finger safe
- Single and 3-phase configuration options
- Aluminum and copper conductor acceptance
- TS35 DIN-rail or direct mountable



Catalog 1: Modular Terminal Blocks

Power Supplies

- Ranges from 0.5A to 40A
- Redundancy options
- AC and DC input voltages
- Single and 3-phase versions
- UPS Control units/ Battery backup units
- DC-to-DC converters



Catalog 11: Circuit and Surge Protection

Circuit Protection

- Miniature circuit breaker
- Numerous trip curves
- Overcurrent protection
- Thermal and hydraulic solutions
- Electronic protectors
- AC and DC protection



Catalog 11: Circuit and Surge Protection

Surge Protection

- For nominal voltages 120V to 600V
- Discharges up to 40kA (8/20µs)
- 1, 2 and 3 phase configurations
- UL1449 Edition 3 approved
- Integral thermal disconnects
- Pluggable replaceable SPD elements
- Local and remote SPD status indication



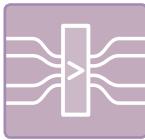
Cat. 4.4: Surge Protection & Cat. 11: Circuit and Surge Protection

AC Receptacles

- Simplex and duplex
- GFCI
- UL508A approvals
- Assembly-free
- DIN-Rail or panel mountable



Catalog 11: Circuit and Surge Protection



SIGNAL

Terminal Blocks

- Global approvals: UL, CSA, IEC, Gost
- Screw, tension, push-in and IDC terminations
- UL 508A SCCR approved
- Fuse, feedthrough, ground, disconnect
- Self-locking screw clamp system



Catalog 1: Modular Terminal Blocks

Fuse Terminal Blocks

- 5 x 20/25mm, 1¼" x 1/4", 13/32" x 1½" and midget
- Blown fuse indication
- Low leakage terminals (0.5 mA)
- 100% vibration resistant
- Self-locking screw clamp system



Catalog 1: Modular Terminal Blocks

Interface Solutions

- PLC/DCS specific pre-assembled cables
- Integrated components (fuses, disconnect)
- Compact and space saving
- 1-wire, 2-wire and 3-wire



Catalog 4.5: Interface Units & PLC Protection

Mechanical and Solid-State

- From 6.1mm
- Up to 4 pole c/o
- Finger-safe connections
- Long life
- Inductive loads
- High frequencies
- Hazardous approval



Catalog 4.5: Interface Units & PLC Protection

Signal Conditioners

- All sensor inputs
- All common outputs
- Hazardous approvals
- Front panel display options
- Wide ambient temperature
- DIP and computer configurable



Catalog 4.1: Analog Signal Conditioning

Signal Isolators

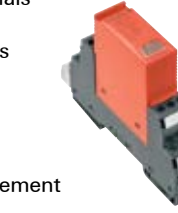
- Digital and analog signals
- 2, 3 and 4 wire models
- 2-channel models and splitters
- Ex isolating barriers (IS)
- HART transparent options
- Configurable input/output
- From 6mm wide per unit



Catalog 4.1: Analog Signal Conditioning

Surge Protection

- For analog, status and network signals
- Discharges up to 20kA (8/20µs)
- Pluggable, replaceable SPD versions
- Local and remote status indication
- SPD element testing option
- Single, multi-stage and floating signal protection
- Integrated ground contact in base element



Cat. 4.4: Surge Protection & Cat. 11: Circuit and Surge Protection



DATA

Connecting and Patch Cables

- Cat 5e, 6, 7 and PROFINET (RJ45 and M12)
- Fiber optic cables SC, ST
- Bulk cable and assembled cables
- PUR, PVC jacket options
- Shielded or unshielded



Catalog 9: Industrial Ethernet

Industrial Ethernet Switches

- Managed and unmanaged
- GigE and POE
- Support copper (RJ45)
- Fiber optic (SC, ST, LC)
- With relay status contacts
- Metal and plastic housings



Catalog 9: Industrial Ethernet

SteadyTEC® Ethernet

- Modular system
- 10-Gig rated
- Copper and fiber
- Field installable
- Plastic and metal versions
- Industry variants 1, 4 and 5



Catalog 9: Industrial Ethernet

Media Converters

- Fully transparent
- Fiber to copper (RJ45), (SC or ST)
- Singlemode and Multimode
- Transmission up to 60 kms
- Serial to Fiber-optic converters



Catalog 9: Industrial Ethernet

Wireless Ethernet

- 5.8GHz
- 2.4GHz (WiFi)
- 900MHz FHSS
- Access Point/Client; Bridge/Router
- 2+ mile range (2.4GHz)
- 20+ mile range (900 FHSS)



Catalog 12: Wireless Connectivity Solutions

Wireless I/O

- 900MHz FHSS
- Transceiver and unidirectional units
- Full 1W of broadcast power
- Modular I/O design
- 20+ mile range
- Meshing and self healing networks



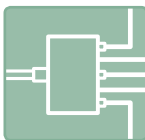
Catalog 12: Wireless I/O and Ethernet Connectivity

Antennas and Accessories

- Omni and Directional
- Mounting brackets
- Bulkhead adapters
- Surge arrestors
- Patch cables (SMA and N type)



Catalog 12: Wireless I/O and Ethernet Connectivity



FIELD

RockStar® Heavy Duty Connectors

- Individual piece parts packaging
- IP 65 ingress protection
- Screw, Tension, PUSH-IN and IDC terminations
- NEMA 4/4X approved
- Stainless steel latches
- Laser etched part numbers



Catalog 3: RockStar® Heavy Duty Connectors

Stainless and Mild Steel Painted Enclosures

- ATEX, IECEx, UL50, UL Ex
- IP66 ingress protection (NEMA 4/4X)
- High temp gaskets -50° C to +135° C
- 1 to 4 gland plate configurations
- 316L stainless steel - 304 mild steel painted



Catalog 5: Enclosures and Cable Glands

Through-Wall Wire Systems – Cabtite (KVT and KEL)

- Configurable Frames for multiple wire routing requirements
- Maintains IP54 (NEMA 4)
- For round cable from 0.12"-1.34" and ASI cable
- Offers integral strain relief
- Accommodates 40 wires in 4.33"



Catalog 10: Industrial Connectivity

Sensor Actuator Interface (SAI)

- Distribution Blocks
- Mounting hood, integrated control cable or on-board connector
- M5, M8 and M12
- Fieldbus Modules
- Analog input/output modules



Catalog 8: Sensor Actuator Interface

Sensor Actuator Cordsets

- M5, M8, M12, M23 and 7/8"
- High flex for > 20 Million Cycles
- Weld slag resistant high flex robotic cables
- Fully shielded
- Field installable connectors
- Valve plug versions



Catalog 8: Sensor Actuator Interface

PCB Solutions – OMNIMATE Terminals and Connectors

- |                              |   |
|------------------------------|---|
| <b>Power</b>                 |   |
| <b>12.70mm &amp; 15.00mm</b> | • Wire Size: 26 – 1 AWG<br>• Max. Current: 127 Amps |
| <b>10.00mm &amp; 10.16mm</b> | • Wire Size: 26 – 6 AWG<br>• Max. Current: 65 Amps  |
| <b>7.50mm &amp; 7.62mm</b>   | • Wire Size: 26 – 10 AWG<br>• Max. Current: 35 Amps |
| <b>Signal</b>                |   |
| <b>5.00mm &amp; 5.08mm</b>   | • Wire Size: 26 – 12 AWG<br>• Max. Current: 20 Amps |
| <b>3.50mm &amp; 3.81mm</b>   | • Wire Size: 28 – 14 AWG<br>• Max. Current: 10 Amps |



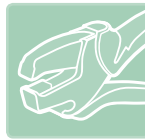
Catalog 2: PCB Terminals and Connectors

Housings

- Series – CH20M
- Scalable connection levels
- Touch proof connection on plug and receptacle sides
- Marking tabs for connectors and front cover
- Multiple color options
- Integrated coding with unique "Autoset" function
- Widths from 6mm to 67.5mm
- Rail mounting bus option



Catalog 2: PCB Terminals and Connectors



TOOLS

Cutting

Cut copper and aluminum cables and wire up to 1260 kcmil

KT 12

- Cuts wire up to 2 AWG
- Blade shape prevents wire distortion

AM 12

- Cuts and strips UTP and STP data cables up to 11 AWG



Screwdrivers

Available with standard or VDE insulated handle.

- Hardened high-alloy steel tips
- Soft-finish grip handles for comfortable handling



Mountable DIN-Rail

- Rail sizes: TS 15/32/35
- Material: Steel, stainless steel, copper and aluminum
- Rail types: solid, slotted, Hi-Rail, shallow and deep



Accessories

Stripping

Quick and accurate stripping with no damage to single conductors

Stripax®

- Strips and cuts flexible conductors from 20...10 AWG

AM 25

- Strips PVC insulated cables, 0.18"...1.0" diameter
- Lengthwise or spiral cuts



Crimping

Precise crimp with minimal force

Stripax® Plus 2.5 – 3-in-1 Tool

- Cuts, strips and crimps linked wire ferrules from 20...14 AWG
- For PVC insulated wire

PZ 6 Roto

- Crimps wire-end ferrules from 24...10 AWG
- Wire insertion from side or front



Ferrules – insulated and non-insulated

- Wire end ferrules ensure a secure and reliable connection.
- 3 color codes available
- Loose, strips, reels and assortments from 24 AWG – 300 MCM



Catalog 6: Tools



MARKING SYSTEMS

Printing Systems

MCP Plotter

- Print over 160 MultiCard types quickly and easily, using Weidmuller's M-Print Pro® software

PrintJet ADVANCED

- Weidmuller's industry-leading marking system
- First full color printer for MultiCard markers
- Print on plastic or metal cards



Catalog 7: Marking Systems

Marker Format Types

Terminal Markers

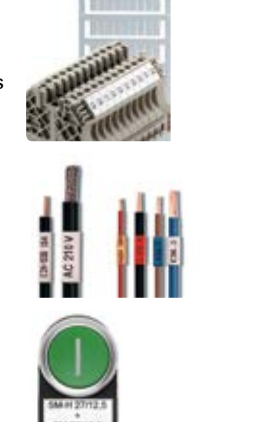
- Terminal blank identifiers for Weidmuller terminals and other manufacturers' terminals

Wire and Cable Markers

- Transparent cover
- Slip-on and clip-on
- Stainless steel

Device Markers

- Placard
- Actuator and contactor
- Switch and push button



For hazardous locations, we offer solutions that include the following agency approvals:

