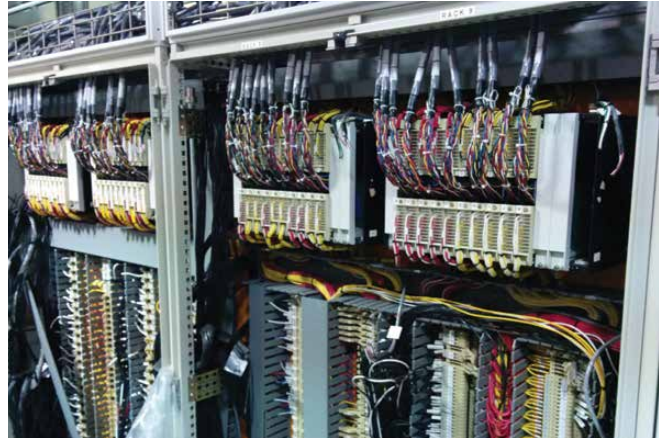
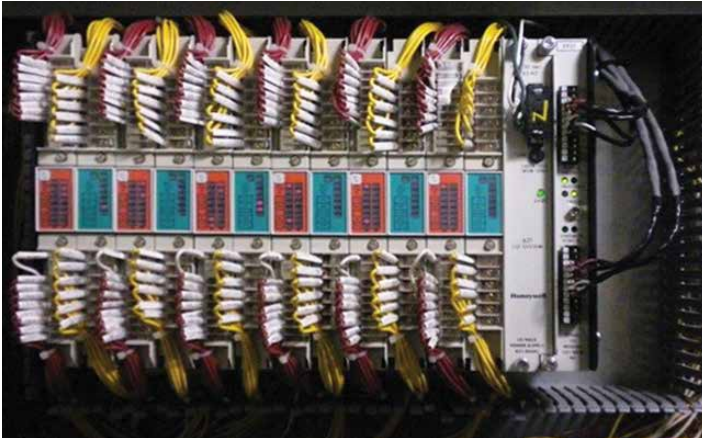


Control System Migration

Let's connect.



Streamline Your DCS Migration



Weidmuller's patented new universal conversion/migration platform will substantially reduce the time and expense of updating your legacy Honeywell DCS systems to any new DCS.

Uniquely designed solution

The key to Weidmuller's migration platform is in the design. It permits your existing field wiring to remain in place and undisturbed on the front panel adaptor and eliminates the need to wire-trace or ring-out.

Compatibility means flexibility

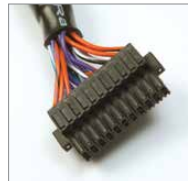
The assembly is a universal conversion/migration system for all legacy Honeywell IPC-620 DCS systems, enabling you to seamlessly migrate to any new control system.

Minimal components maximize migration efficiency

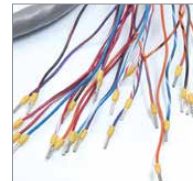
Weidmuller's migration solution includes just four versions of a card adaptor, 12-, 22-, 24- and 38-points, and two cable types to accommodate flying leads or pre-wired field connections.



Card Adaptors



22-Pin Connector



Flying Ferrule Leads



UL Approved Cables

Global approvals

The card adaptors are cURus approved and the certified cables are UL and CSA listed. In addition, the cables are RoHS and FT4 rated at 300V.



Migrate and test in hours, not weeks.

Using Weidmuller's patented migration platform, here's how easy it is to migrate your DCS, step-by-step:

START



Existing IPC Logic Manager

STEP 1



Remove existing Field Wiring adaptors

STEP 2



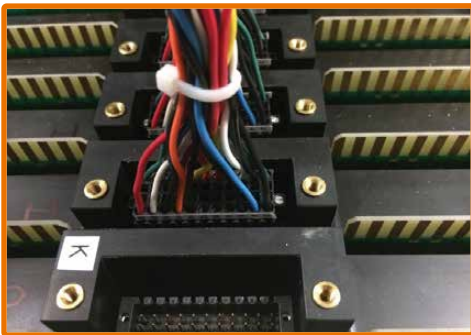
Remove existing controller cards

STEP 3



Replace controller card with Weidmuller adaptor card

STEP 4



Connect cable with connector to adaptor card

STEP 5



Reattach existing Field Wiring adaptors

DONE!



Completed and migrated DCS System

Benefits

- Keep your existing field terminations landed. No ring out needed!
- Perform your DCS conversion in hours instead of weeks.
- All components are plug-and-play with keyed connectors to eliminate any chance of wiring errors.

Universal Card Adaptors

- Feed through connections
- IPC-620 conversion to pluggable connector(s)
- 12-, 22-, 24- or 38-point cards



Technical data

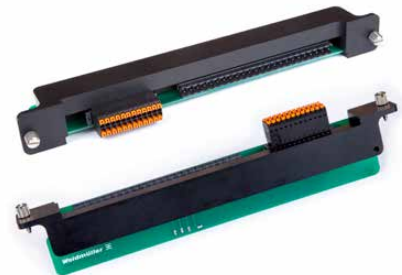
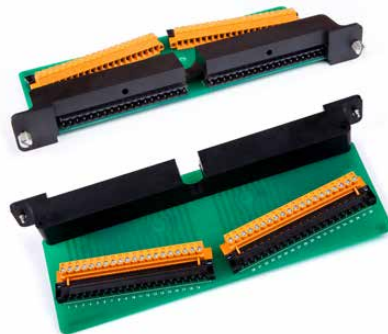
Connection data	
Process side	Card edge fingers on PWB for legacy style connectors
Type	Tension Clamp, OEM
Control side	One 3.5 pitch 12-point S2L connector
Type	Tension type connection
Rated data	
Rated voltage	150V max.
Max. current per channel	5A
Operating temperature	0°C to +50°C
Storage temperature	0°C to +50°C
Approvals	
Standards	cURus (E141197)
Physicals	
	Designed to fit in existing I/O rack
Note	
	Cabling not included

Ordering data

Model	Qty	Part No.
12-point IPC-620 carrier	1	6720000787

Model	Qty	Part No.
22-point IPC-620 carrier	1	6720000788

Note



Technical data

Connection data	
Process side	Two SL 5.00 pitch headers to mate to legacy connectors (2 x 19 points – 38 points total)
Type	Screw type connection, OEM
Control side	Two 5.08 pitch 20-point SL headers
Type	Screw type connection
Rated data	
Rated voltage	125V max.
Max. current per channel	3.0A per point max. 10 Amps per whole assembly
Operating temperature	0°C to +50°C
Storage temperature	0°C to +50°C
Approvals	
Standards	cURus (E141197)
Physicals	
	Designed to fit in existing I/O rack
Note	
	Cabling not included

Ordering data

Model	Qty	Part No.
38-point IPC-620 carrier	1	6720001225

Model	Qty	Part No.
24-point IPC-620 carrier	1	6720001226

Note

Migration Cables

Select the cable configuration that best fits your application

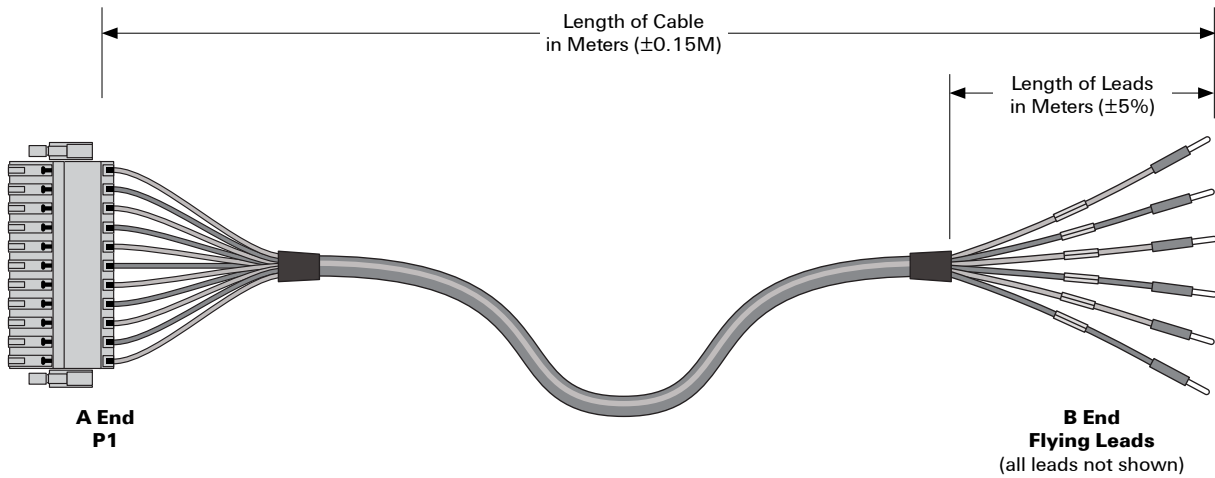
Weidmuller has teamed with designers to provide a simple and easy solution to migrate your control system. This migration system features universal card adaptors and engineered cables.

On Weidmuller.com, we provide you with these components and the information needed to design your migration bill of materials:

- **Engineered Cables**

These special cables are designed and built to make the migration of your DCS simple and easy. A handy cable designer utility, the Migration Cable Configurator, has been developed to make cable design, selection, and cost evaluation straightforward and fast.

To start designing your migration system, visit: www.weidmuller.com/migration



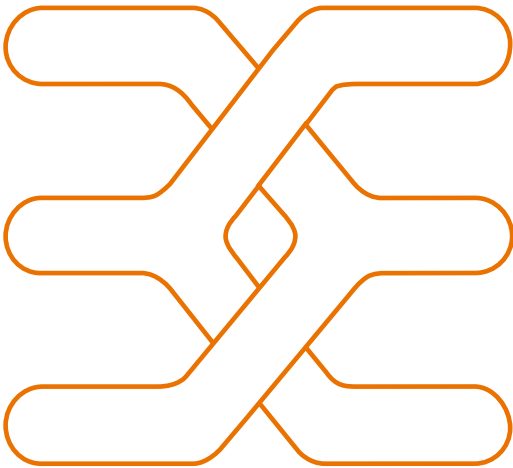
Example: MCB2LFFL101822010

MC		B2L		FFL		10		18		22		010	
Marshalling Cable IPC 620		Cable Entry, A End		Lead Type, B End		Length of Leads, B End*		Wire AWG		No. of Wires		Length of Cable in Meters*	
B1L	12 Terminal Points	FFL	Ferruled Flying Leads	03	0.3 meters	22	22 AWG	12	12 Points	1.5	1.5 meters		
B2L	22 Terminal Points	BFL	Blunt-End Flying Leads	•	•	18	18 AWG	22	22 Points	005	5.0 meters		
B3L	24 Terminal Points	TFL	Tinned Flying Leads	10	1.0 meters			24	24 Points	010	10.0 meters		
B4L	38 Terminal Points	RFL	Ring Lug Flying Leads	99	9.9 meters			38	38 Points	100	100.0 meters		

*Note: Lengths can be customized to your needs

Not migrating from an IPC-620 platform? Contact your Weidmuller representative. We have the knowledge and technology to help migrate other legacy control systems.

Weidmuller – your system migration solution expert!



Weidmuller is the leading manufacturer of components for electrical connection technology to transmit energy, signals and data. The Weidmuller product portfolio ranges from terminal blocks, PCB connectors and terminals, protected components, Industrial Ethernet components, I/O components and relay sockets to power supplies and over-voltage protection modules suitable for all applications. Assemble Services, marking solutions with a variety of tools and software systems, round off the range. As an OEM supplier, the company sets global standards in the field of electrical connection technology.

Weidmuller, Canada

10 Spy Court
Markham, Ontario L3R 5H6
Telephone: (800) 268-4080
Facsimile: (877) 300-5635
Email: info1@weidmuller.ca
Website: www.weidmuller.ca

Weidmuller, Mexico

Blvd. Hermanos Serdán 698,
Col. San Rafael Oriente
Puebla, Puebla, Mexico
C.P. 72029
Telephone: 01 222 2686267
Facsimile: 01 222 2686219
Email: clientes@weidmuller.com.mx
Website: www.weidmuller.com.mx

Weidmuller, United States

821 Southlake Blvd.
Richmond, Virginia 23236
Telephone: (800) 849-9343
Facsimile: (804) 379-2593
Email: info@weidmuller.com
Website: www.weidmuller.com

Let's connect.

www.weidmuller.com

Weidmüller 