



885 Heavy Duty Terminal Block Series

Marathon Special Products is proud to announce an addition to our [Heavy Duty Terminal Block](#) product line. This new product will provide 85A in a compact footprint. This terminal block is deadfront type, with line numbering molded into the insulator base, eliminating the need for marking strips.

SPECIFICATIONS

- 600V, 85 amps
- Available in 1 to 12 terminal positions
- UL and cUL recognized component
- 0.432" centerline spacing
- 16 in lbs force

FEATURES

- 85A in a smaller footprint
- Numbered terminal positions
- Accommodates conductor sizes #4 AWG - #18 AWG

BENEFITS

- Sturdy thermoplastic construction
- Multiple small wires per terminal available
- Versatile product for use in many industries
- Flexible stranded wire approval

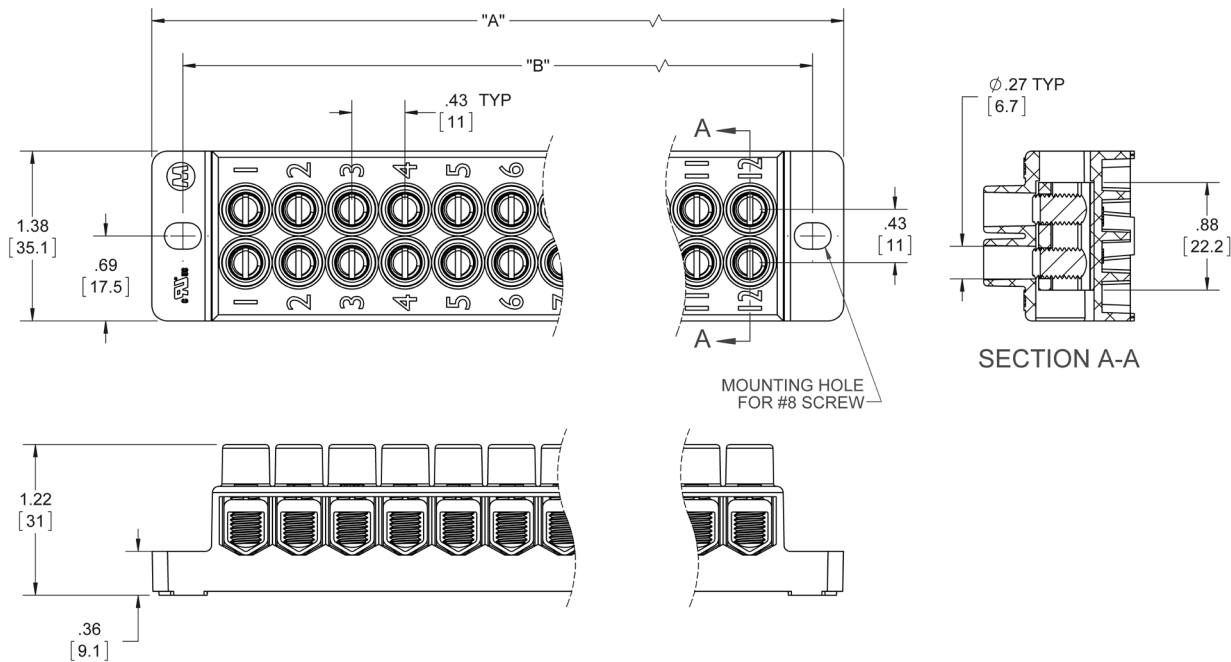
APPLICATIONS

- Irrigation
- Renewable Energy
- Wastewater
- Utility
- Industrial Control
- Charging Stations
- Automotive
- Lighting

A Regal Brand

REGAL

885 Heavy Duty Terminal Block Series



Lines	DIM "A"±.015 [.38]	DIM "B"±.015 [.38]
1	1.524 [38.71]	1.020 [25.91]
2	1.956 [49.68]	1.452 [36.88]
3	2.388 [60.66]	1.884 [47.85]
4	2.820 [71.63]	2.316 [58.83]
5	3.252 [82.60]	2.748 [69.80]
6	3.684 [93.57]	3.180 [80.77]
7	4.116 [104.55]	3.612 [91.74]
8	4.548 [115.52]	4.044 [102.72]
9	4.980 [126.49]	4.476 [113.69]
10	5.412 [137.46]	4.908 [124.66]
11	5.844 [148.44]	5.340 [135.64]
12	6.276 [159.41]	5.772 [146.61]

marathon™
Special Products

427 Van Camp Road
Bowling Green, Ohio 43402
PH: 419-352-8441
FAX: 419-352-0875

www.marathonsp.com

A Regal Brand



www.regalbeloit.com