

**Electro-polished for long-term protection**  
For enclosures installed in harsh environments, the electro-polished surfaces offer additional protection against corrosion.



**Temperature and sealant properties**  
A neoprene gasket provides a secure seal for the enclosure and ensures performance in temperature ranges from -40 °C up to +85 °C.



**Individual solutions**  
Whether minor modifications or specific designs – our application specialists at Weidmüller develop and create the ideal, customised solution for your needs.



**Interior mounting**  
A dedicated mounting profile of the enclosure facilitates the flexible, simple and secure installation of mounting rails or mounting plates within the enclosure.



#### Additional benefits

Depending on the customer- or industry-specific application, our enclosures can be modified, in compliance with international standards and regulations, with various accessories such as terminals, electronics, viewing windows, markers, etc. and delivered worldwide.

#### Weidmüller – Partner in Industrial Connectivity

As experienced experts we support our customers and partners around the world with products, solutions and services in the industrial environment of power, signal and data. We are at home in their industries and markets and know the technological challenges of tomorrow. We are therefore continuously developing innovative, sustainable and useful solutions for their individual needs. Together we set standards in Industrial Connectivity.

**You are working in challenging environments  
We offer protection for devices and control  
Let's connect.**

Klippon® TBi



Weidmüller Interface GmbH & Co. KG  
Klingenbergstraße 16  
32758 Detmold, Germany  
T +49 5231 14-0  
F +49 5231 14-292083  
info@weidmueller.com  
www.weidmueller.com



Order number: 1423520000/12/2012/SMKW

**Weidmüller**

# Klippon® TBi electro-polished, stainless steel enclosures

## Protection for devices and control components in demanding industrial environments

Protect your components completely from dust, moisture, extreme temperatures and vibrations. Let's connect.

Even under moderate environmental conditions, there is an increasing need for complex, individual automation solutions. A harsh industrial environment places additional, strict demands on applications and determines the design of the industrial enclosures to meet these demands.

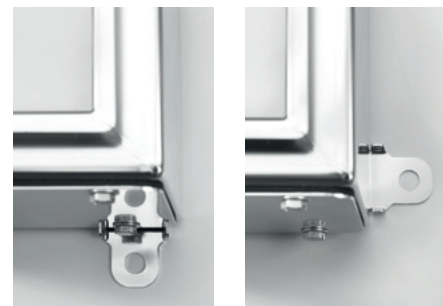
With complete protection and excellent durability, our Klippon® TBi stainless steel enclosures offer the best protection for the components inside them. Neither dirt nor moisture can penetrate them. Their electro-polished surface makes them extraordinarily resistant to corrosion.

We have used our in-depth understanding from years of practice in this field to develop standard enclosures to meet numerous industrial needs. However, we are always open to individual desires. Let's connect.

**Clear design**  
You have the choice: the Klippon® TBi QL with a double-bit lock and hinged lid or the Klippon® TBi FS with a completely removable lid and fixing screws.



**Adaptable mounting lugs**  
Supplied as an accessory, the flexible mounting fixing lugs provide either vertical or horizontal installation options.



**International approvals**  
Every one of our enclosures is tested in accordance to EN 62208. We also meet industry-specific approvals, such as Germanischer Lloyd.



### Enclosures Klippon® TBi QL - Quarter Lock

#### Stainless steel enclosures for use within harsh industrial environments



The Klippon® TBi QL range of enclosures offers the following advantages:

- In 11 sizes and 2 standard depths
- Dedicated internal mounting support bracket for fixing terminal rail or mounting plates with self forming screws
- External Earth point – suitable for M6 threaded screw
- Concealed hinges
- Internal earth stud – M6 screw fitted to enclosure lid and base
- Supplied in 0 or 1 gland plate version
- Seamless laser welding ensures a quality finish
- Direct enclosure mounting is provided via the fixing positions placed into the rear of enclosure
- Stainless steel mounting lugs (optional) for wall fixing
- Dust and moisture channel
- Quarter Turn Double Bit Lock (chrome effect finish)
- Product identification
- Multi-functional steel key is provided
- Durable and environment friendly packaging

#### Technical data

- Lid opening: 125°
- Lid fixing: Quarter lock with double bit

### Enclosures Klippon® TBi FS – Fixing Screw

#### Stainless steel enclosures for use within harsh industrial environments



The Klippon® TBi FS range of enclosures offers the following advantages:

- In 11 sizes and 2 standard depths
- Dedicated internal mounting support bracket for fixing terminal rail or mounting plates with self forming screws
- External earth point – suitable for M6 threaded screw
- Internal earth stud – M6 screw fitted to enclosure lid and base
- Supplied in 0 or 1 gland plate version
- Seamless laser welding ensures a quality finish
- Direct enclosure mounting is provided via the fixing positions placed into the rear of enclosure
- Stainless steel mounting lugs (optional) for wall fixing
- Product identification
- Durable and environment friendly packaging

#### Technical data

- Lid opening: Fully removable lid
- Lid fixing: M6 hexagon head slotted screws SW10 without hinge

#### Overview of enclosures

Description	Height x Width x Depth	0 Gland Plate	1 Gland Plate	Description	Height x Width x Depth	0 Gland Plate	1 Gland Plate
KTBi QL 302015 S2E_*	300 x 200 x 150	1197430000	1197440000	KTBi FS 302015 S2E_*	300 x 200 x 150	1197200000	1197210000
KTBi QL 303015 S2E_*	300 x 300 x 150	1197450000	1197460000	KTBi FS 303015 S2E_*	300 x 300 x 150	1197220000	1197230000
KTBi QL 303022 S2E_*	300 x 300 x 220	1197470000	1197480000	KTBi FS 303022 S2E_*	300 x 300 x 220	1197240000	1197250000
KTBi QL 403015 S2E_*	400 x 300 x 150	1197490000	1197500000	KTBi FS 403015 S2E_*	400 x 300 x 150	1197260000	1197270000
KTBi QL 403022 S2E_*	400 x 300 x 220	1197510000	1197520000	KTBi FS 403022 S2E_*	400 x 300 x 220	1197280000	1197290000
KTBi QL 404022 S2E_*	400 x 400 x 220	1197530000	1197540000	KTBi FS 404022 S2E_*	400 x 400 x 220	1197300000	1197310000
KTBi QL 504022 S2E_*	500 x 400 x 220	1197550000	1197560000	KTBi FS 504022 S2E_*	500 x 400 x 220	1197320000	1197330000
KTBi QL 505022 S2E_*	500 x 500 x 220	1197570000	1197580000	KTBi FS 505022 S2E_*	500 x 500 x 220	1197340000	1197350000
KTBi QL 604022 S2E_*	600 x 400 x 220	1197590000	1197600000	KTBi FS 604022 S2E_*	600 x 400 x 220	1197360000	1197370000
KTBi QL 606022 S2E_*	600 x 600 x 220	1197610000	1197620000	KTBi FS 606022 S2E_*	600 x 600 x 220	1197380000	1197390000
KTBi QL 806022 S2E_*	800 x 600 x 220	1197630000	1197640000	KTBi FS 806022 S2E_*	800 x 600 x 220	1197400000	1197410000

**Note** \*Placeholder for the number of gland plates (0 or 1)

#### Technical data

Material	Stainless steel 1.4301 (304) 1.5 mm
Surface	Electro-polished
IP Rating	IP 66
NEMA Rating	3, 4x, 12
Gland plates	0 and 12 out of stainless steel 304 (1.4301) fixed with M6 hexagon head screws with 10 mm slot width
Earthing inside	Welded-on M6 stainless-steel earth stud in enclosure lid and base
Earthing outside	External earth position - suitable for M6 threaded screw
Equipment mounting	Mountin rail with pre-defined holes for fixing mounting plate or terminal rail with self forming screws
Enclosure mounting	4 external mounting lugs (to turn in 90° angle), rear holes of enclosure 11 mm
Impact resistance	10J
Gasket material	Neoprene - CR
Operating temperature range	-40 °C to +85 °C
Tightening torque of gland plates screws*	2.5 Nm
<b>Note</b>	*Please use our hexagon screwdriver with 10 mm size (z.B.: 9009070000)

#### Approvals for empty enclosures

DIN EN 62208	Empty enclosure standard
Germanischer Lloyd	Z0 593 - 11 HH
cULus	Pending

#### Accessories

	Qty.	Order No.
<b>External mounting feet</b>		
MF KTBI S2 SET	1 Set = 4 pcs.	1289180000
<b>Self forming mounting plate screw</b>		
GFSC M5x10 TX20 SET	1 Set = 20 pcs.	1274150000
<b>Lock Insert (for Klippon® TBi QL)</b>		
KTBI QLL S2 SLS	1	1191600000
KTBI QLL S2 DB3	1	1191590000
<b>Mounting plates – Mild steel zinc coated (zintec)</b>	<b>Height x Width x Depth in mm</b>	
KTBI MOPL 3020 MSZN	229 129 1,5	1 1309690000
KTBI MOPL 3030 MSZN	229 229 1,5	1 1310410000
KTBI MOPL 4030 MSZN	329 229 1,5	1 1310420000
KTBI MOPL 4040 MSZN	329 329 1,5	1 1310430000
KTBI MOPL 5040 MSZN	429 329 1,5	1 1310440000
KTBI MOPL 5050 MSZN	429 429 1,5	1 1310450000
KTBI MOPL 6040 MSZN	529 329 12	1 1310460000
KTBI MOPL 6060 MSZN	529 529 12	1 1310470000
KTBI MOPL 8060 MSZN	729 529 12	1 1310480000
<b>Mounting plates – Sheet steel 1.4301 natural</b>	<b>Height x Width x Depth in mm</b>	
KTBI MOPL 3020 S2N	229 129 1,5	1 1309700000
KTBI MOPL 3030 S2N	229 229 1,5	1 1310320000
KTBI MOPL 4030 S2N	329 229 1,5	1 1310330000
KTBI MOPL 4040 S2N	329 329 1,5	1 1310340000
KTBI MOPL 5040 S2N	429 329 1,5	1 1310350000
KTBI MOPL 5050 S2N	429 429 1,5	1 1310360000
KTBI MOPL 6040 S2N	529 329 12	1 1310370000
KTBI MOPL 6060 S2N	529 529 12	1 1310380000
KTBI MOPL 8060 S2N	729 529 12	1 1310390000