



Color Your Way to an Improved Workplace.

**BBP[®]37 Color and Cut
Sign & Label Printer**

**BBP[®]35 Multicolor
Sign & Label Printer**

Color Your Way to an

Unprecedented Capabilities Set the New Standard in Safety & Facility Identification

Because safety and productivity mean the world to you, it's time to step up to the new standard by creating signs and labels that demand attention. After all, effective workplace visuals make all the difference in taking your facility to the next level by giving employees the information they need right at a glance. **And now there's a tool to do it all!**

Brady's BBP®35 and BBP®37 sign and label printers give you the power to make signs and labels in the colors and shapes you need to make an impact – right at your own facility and right when you need them. With remarkable multi-color printing, versatile shape-cutting capabilities and impressively fast print speeds, you'll never know how you lived without one of these printers.

Faster. Easier. More Versatile. Expect Nothing Less!



Multiple Print Colors

- Print signs and labels that are more noticeable, more memorable and more effective
- Color is the differentiator when you need to effectively improve workplace safety and productivity



Shape Cutting

- Revolutionary built-in XY plotter-cutter system in the BBP37 printer
- Cut out shapes and text, or cut around your message to create labels that look and fit just how you want them to

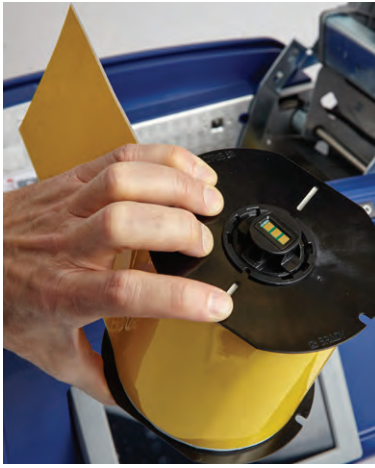


Label Making Made Easy

- Incredibly easy and intuitive so anyone can walk up and print labels
- Ideal for multiple users, centralized locations and lean/5S events
- Compatible with powerful Brady Workstation Label Apps for added versatility



Improved Workplace



Automatic Label Setup

- Printers read critical information from the supply cartridge and then automatically set up the label attributes so you can start printing immediately
- No more calibration or wasted labels, no print speed/burn temperature trial labels, no scrolling through screens to select a label and no wasted time setting up label dimensions or text size

20-second Material Changeovers

- “Drop in” ribbons and labels mean no complicated threading, assembling spindles, sensor adjustment or calibration steps
- You can get on with the job faster, giving you more time for other tasks



5 Inches per Second Print Speed

- Fast processing time and print speed mean you don't have to wait around for your labels



Table of Contents

Facility & Safety ID

| | |
|--|----|
| Pre-Printed GHS/CLP Chemical Labels | 5 |
| Indoor/Outdoor Vinyl | 6 |
| Low-Halide Polyester | 7 |
| Pre-Printed Pre-Cut Blank Sign Headers | 8 |
| Non-Adhesive Tags | 8 |
| ToughWash® Washdown Resistant Labels | 9 |
| Printable Magnetic Supply | 9 |
| ToughStripe® Printable Floor Tape | 10 |
| Repositionable Vinyl | 10 |
| Retro Reflective Labels | 11 |
| BradyGlo Photoluminescent Tape | 11 |
| Cold Temperature Material | 11 |
| Circle Gauge Labels | 12 |
| Gradient “Ruler” Labels | 12 |
| Arc Flash Labels | 13 |
| Make Your Own Rigid Valve Tags | 13 |
| Blank Rigid Panels | 14 |
| Product ID Materials | 15 |
| Tamper-Evident Asset ID Labels | 15 |
| Raised Profile Labels (Rectangular) | 16 |
| Raised Profile Labels (Push Button) | 17 |

| | |
|---------------------------|-------|
| Starter Kits | 18-19 |
|---------------------------|-------|

| | |
|----------------------------|-------|
| Print Ribbons | 20-21 |
|----------------------------|-------|

| | |
|-----------------------|----|
| Software | 22 |
|-----------------------|----|

| | |
|---|----|
| Printers & Accessories | 23 |
|---|----|

BBP®37
COLOR & CUT
SIGN & LABEL PRINTER

BBP®35
MULTICOLOR SIGN & LABEL PRINTER



Legendary Material Performance

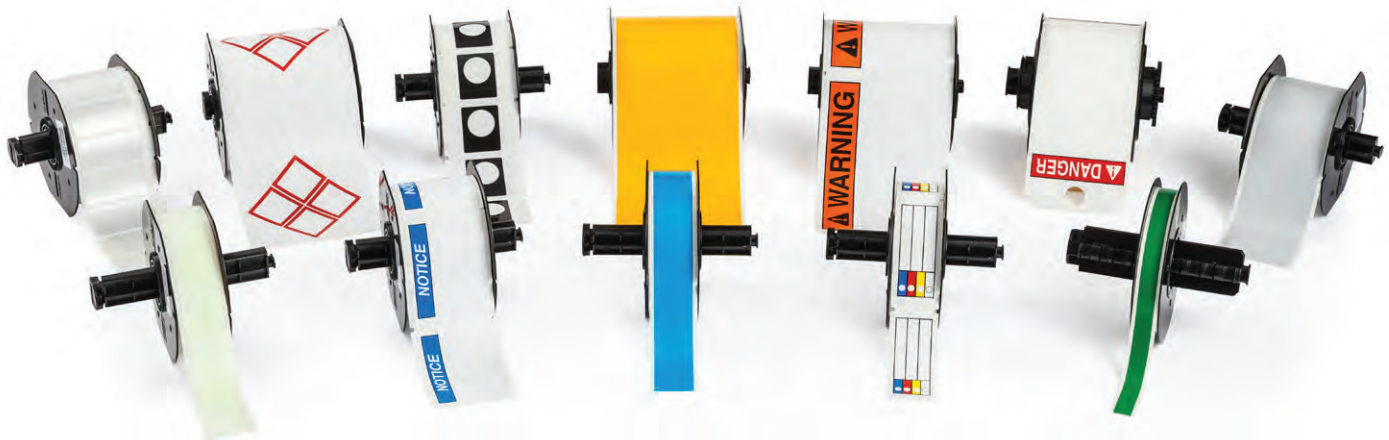
- Brady labels are reliable and durable because we design labels in our own facilities and put them through rigorous R&D tests and trials before they're ready for use
- Nothing leaves our doors without meeting our standards
- Some last up to 10 years outdoors. Stick to rough surfaces or smooth; dirty surfaces or clean; in harsh conditions or normal conditions. With that kind of reliability, you'll only need to make these labels once

Options. Lots of Options

- Print pipe labels, GHS chemical labels, labels that glow in the dark and labels that aren't even labels at all (they're tags!)
- With over 300 parts in all, you can label it all!
- Any "B30" label or ribbon supply is compatible for use in BBP35 and 37 sign and label printers, if it was manufactured after September 1, 2015



This icon indicates that a particular part can be XY-Plotter cuttable in the BBP37 printer model. Shapes and 0.75" or taller text can be cut from these materials.



Pre-Printed GHS / CLP Chemical Labels (B-7569)

- Blank labels with pre-printed red diamonds allow the printer to produce 2-color GHS / CLP labels in one print pass
- 3 sizes of labels, each with 6 diamond layouts that match templates in the Brady Workstation GHS App
- Indoor/outdoor vinyl material and durable inks withstand exposure to moisture, chemicals and handling
- You can also make GHS labels with white tape and black/red ribbon to reduce your supply inventory

Service Temp: -4°F to 180°F Application Temp: 50°F to 180°F
Average Outdoor Durability: 3-5 years



| Fits Printer Model(s) | Catalog # | B# | Material | Legend | Label Height Inch (mm) | Label Width Inch (mm) | Labels Per Row | Labels Per Roll | Rec. Ribbon | |
|-----------------------|--------------------|--------|----------|--------|------------------------|-----------------------|----------------|-----------------|-------------|------------|
| BBP37,35, 31, 33 | B30-260-7569-CLP1 | B-7569 | Vinyl | | L1 Diamond + Text | 2.170 (55.0) | 3.350 (85.0) | 1 | 340 | B30-R10000 |
| BBP37,35, 31, 33 | B30-261-7569-CLP1 | B-7569 | Vinyl | | L1 Diamond + Text | 2.950 (75.0) | 4.330 (110.0) | 1 | 270 | B30-R10000 |
| BBP37,35, 31, 33 | B30-262-7569-CLP1 | B-7569 | Vinyl | | L1 Diamond + Text | 4.130 (105.0) | 6.100 (155.0) | 1 | 200 | B30-R10000 |
| BBP37,35, 31, 33 | B30-260-7569-CLP2 | B-7569 | Vinyl | | L2 Diamond + Text | 2.170 (55.0) | 3.350 (85.0) | 1 | 340 | B30-R10000 |
| BBP37,35, 31, 33 | B30-261-7569-CLP2 | B-7569 | Vinyl | | L2 Diamond + Text | 2.950 (75.0) | 4.330 (110.0) | 1 | 270 | B30-R10000 |
| BBP37,35, 31, 33 | B30-262-7569-CLP2 | B-7569 | Vinyl | | L2 Diamond + Text | 4.130 (105.0) | 6.100 (155.0) | 1 | 200 | B30-R10000 |
| BBP37,35, 31, 33 | B30-260-7569-CLP3A | B-7569 | Vinyl | | L3A Diamond + Text | 2.170 (55.0) | 3.350 (85.0) | 1 | 340 | B30-R10000 |
| BBP37,35, 31, 33 | B30-261-7569-CLP3A | B-7569 | Vinyl | | L3A Diamond + Text | 2.950 (75.0) | 4.330 (110.0) | 1 | 270 | B30-R10000 |
| BBP37,35, 31, 33 | B30-262-7569-CLP3A | B-7569 | Vinyl | | L3A Diamond + Text | 4.130 (105.0) | 6.100 (155.0) | 1 | 200 | B30-R10000 |
| BBP37,35, 31, 33 | B30-260-7569-CLP3B | B-7569 | Vinyl | | L3B Diamond + Text | 2.170 (55.0) | 3.350 (85.0) | 1 | 340 | B30-R10000 |
| BBP37,35, 31, 33 | B30-261-7569-CLP3B | B-7569 | Vinyl | | L3B Diamond + Text | 2.950 (75.0) | 4.330 (110.0) | 1 | 270 | B30-R10000 |
| BBP37,35, 31, 33 | B30-262-7569-CLP3B | B-7569 | Vinyl | | L3B Diamond + Text | 4.130 (105.0) | 6.100 (155.0) | 1 | 200 | B30-R10000 |
| BBP37,35, 31, 33 | B30-260-7569-CLP4A | B-7569 | Vinyl | | L4A Diamond + Text | 2.170 (55.0) | 3.350 (85.0) | 1 | 340 | B30-R10000 |
| BBP37,35, 31, 33 | B30-261-7569-CLP4A | B-7569 | Vinyl | | L4A Diamond + Text | 2.950 (75.0) | 4.330 (110.0) | 1 | 270 | B30-R10000 |
| BBP37,35, 31, 33 | B30-262-7569-CLP4A | B-7569 | Vinyl | | L4A Diamond + Text | 4.130 (105.0) | 6.100 (155.0) | 1 | 200 | B30-R10000 |
| BBP37,35, 31, 33 | B30-260-7569-CLP4B | B-7569 | Vinyl | | L4B Diamond + Text | 2.170 (55.0) | 3.350 (85.0) | 1 | 340 | B30-R10000 |
| BBP37,35, 31, 33 | B30-261-7569-CLP4B | B-7569 | Vinyl | | L4B Diamond + Text | 2.950 (75.0) | 4.330 (110.0) | 1 | 270 | B30-R10000 |
| BBP37,35, 31, 33 | B30-262-7569-CLP4B | B-7569 | Vinyl | | L4B Diamond + Text | 4.130 (105.0) | 6.100 (155.0) | 1 | 200 | B30-R10000 |



Brady WorkStation has a GHS Label App!

- Built-in pre-formatted label layouts and approved GHS symbols
- Pre-worded hazard statements and GHS symbols that just click and drag into the layout (no need to type everything in)
- Once you create a label, the data is there and you can print any size with only a single click
- Automatic "block-out" of unused diamonds on pre-printed supplies so you can inventory fewer label rolls
- No driver needed when connected to a Brady BBP®35, 37, 31, 33 or 85 printer



Indoor/Outdoor Vinyl (B-595)

- For general facility and safety identification: Our best industrial vinyl yet
- Durable, low-shrink vinyl with our most aggressive adhesive
- Conforms to irregular, curved, rough and highly textured surfaces (painted cinder blocks, uneven wood, textured plastics, paper-jacketed pipes, powder-coated surfaces)
- Adheres to “difficult” low-surface energy items (PVC piping, blow-molded equipment cases, ABS plastics, recycled plastics)

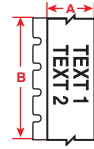


Figure 33



Facility and Safety Applications:

- 5S Labels
- Pipe Markers
- Safety & Warning Labels
- Equipment & Panel Labels
- Arc Flash & Chemical Labels
- And More!

Service Temp: -40°F to 180°F Application Temp: 0°F to 180°F
 Average Outdoor Durability: 8-10 year outdoor vinyl label durability.
 Agency approvals: RoHS

| Fits Printer Model(s) | Diagram | Catalog # | B# | Color | Label Width A Inch (mm) | Roll Length B Feet (m) | Labels Per Roll | Rec. Ribbon |
|-----------------------|---------|------------------|-------|--------|-------------------------|------------------------|-----------------|-----------------|
| BBP37,35, 31, 33 | Fig. 33 | B30C-500-595-WT | B-595 | White | 0.500 (12.7) | 100ft. (30.5m) | 1 roll (cont.) | B30-R10000 |
| BBP37,35, 31, 33 | Fig. 33 | B30C-1125-595-WT | B-595 | White | 1.125 (28.6) | 100ft. (30.5m) | 1 roll (cont.) | B30-R10000 |
| BBP37,35, 31, 33 | Fig. 33 | B30C-2250-595-WT | B-595 | White | 2.250 (57.5) | 100ft. (30.5m) | 1 roll (cont.) | B30-R10000 |
| BBP37,35, 31, 33 | Fig. 33 | B30C-3000-595-WT | B-595 | White | 3.000 (76.2) | 100ft. (30.5m) | 1 roll (cont.) | B30-R10000 |
| BBP37,35, 31, 33 | Fig. 33 | B30C-4000-595-WT | B-595 | White | 4.000 (101.6) | 100ft. (30.5m) | 1 roll (cont.) | B30-R10000 ✕ |
| BBP37,35, 31, 33 | Fig. 33 | B30C-500-595-YL | B-595 | Yellow | 0.500 (12.7) | 100ft. (30.5m) | 1 roll (cont.) | B30-R10000 |
| BBP37,35, 31, 33 | Fig. 33 | B30C-1125-595-YL | B-595 | Yellow | 1.125 (28.6) | 100ft. (30.5m) | 1 roll (cont.) | B30-R10000 |
| BBP37,35, 31, 33 | Fig. 33 | B30C-2250-595-YL | B-595 | Yellow | 2.250 (57.5) | 100ft. (30.5m) | 1 roll (cont.) | B30-R10000 |
| BBP37,35, 31, 33 | Fig. 33 | B30C-3000-595-YL | B-595 | Yellow | 3.000 (76.2) | 100ft. (30.5m) | 1 roll (cont.) | B30-R10000 |
| BBP37,35, 31, 33 | Fig. 33 | B30C-4000-595-YL | B-595 | Yellow | 4.000 (101.6) | 100ft. (30.5m) | 1 roll (cont.) | B30-R10000 ✕ |
| BBP37,35, 31, 33 | Fig. 33 | B30C-500-595-RD | B-595 | Red | 0.500 (12.7) | 100ft. (30.5m) | 1 roll (cont.) | B30-R10000-WT |
| BBP37,35, 31, 33 | Fig. 33 | B30C-1125-595-RD | B-595 | Red | 1.125 (28.6) | 100ft. (30.5m) | 1 roll (cont.) | B30-R10000-WT |
| BBP37,35, 31, 33 | Fig. 33 | B30C-2250-595-RD | B-595 | Red | 2.250 (57.5) | 100ft. (30.5m) | 1 roll (cont.) | B30-R10000-WT |
| BBP37,35, 31, 33 | Fig. 33 | B30C-3000-595-RD | B-595 | Red | 3.000 (76.2) | 100ft. (30.5m) | 1 roll (cont.) | B30-R10000-WT ✕ |
| BBP37,35, 31, 33 | Fig. 33 | B30C-4000-595-RD | B-595 | Red | 4.000 (101.6) | 100ft. (30.5m) | 1 roll (cont.) | B30-R10000-WT ✕ |
| BBP37,35, 31, 33 | Fig. 33 | B30C-500-595-BL | B-595 | Blue | 0.500 (12.7) | 100ft. (30.5m) | 1 roll (cont.) | B30-R10000-WT |
| BBP37,35, 31, 33 | Fig. 33 | B30C-1125-595-BL | B-595 | Blue | 1.125 (28.6) | 100ft. (30.5m) | 1 roll (cont.) | B30-R10000-WT |
| BBP37,35, 31, 33 | Fig. 33 | B30C-2250-595-BL | B-595 | Blue | 2.250 (57.5) | 100ft. (30.5m) | 1 roll (cont.) | B30-R10000-WT |
| BBP37,35, 31, 33 | Fig. 33 | B30C-3000-595-BL | B-595 | Blue | 3.000 (76.2) | 100ft. (30.5m) | 1 roll (cont.) | B30-R10000-WT ✕ |
| BBP37,35, 31, 33 | Fig. 33 | B30C-4000-595-BL | B-595 | Blue | 4.000 (101.6) | 100ft. (30.5m) | 1 roll (cont.) | B30-R10000-WT ✕ |
| BBP37,35, 31, 33 | Fig. 33 | B30C-500-595-GN | B-595 | Green | 0.500 (12.7) | 100ft. (30.5m) | 1 roll (cont.) | B30-R10000-WT |
| BBP37,35, 31, 33 | Fig. 33 | B30C-1125-595-GN | B-595 | Green | 1.125 (28.6) | 100ft. (30.5m) | 1 roll (cont.) | B30-R10000-WT |
| BBP37,35, 31, 33 | Fig. 33 | B30C-2250-595-GN | B-595 | Green | 2.250 (57.5) | 100ft. (30.5m) | 1 roll (cont.) | B30-R10000-WT |
| BBP37,35, 31, 33 | Fig. 33 | B30C-3000-595-GN | B-595 | Green | 3.000 (76.2) | 100ft. (30.5m) | 1 roll (cont.) | B30-R10000-WT ✕ |
| BBP37,35, 31, 33 | Fig. 33 | B30C-4000-595-GN | B-595 | Green | 4.000 (101.6) | 100ft. (30.5m) | 1 roll (cont.) | B30-R10000-WT ✕ |
| BBP37,35, 31, 33 | Fig. 33 | B30C-500-595-OR | B-595 | Orange | 0.500 (12.7) | 100ft. (30.5m) | 1 roll (cont.) | B30-R10000 |
| BBP37,35, 31, 33 | Fig. 33 | B30C-1125-595-OR | B-595 | Orange | 1.125 (28.6) | 100ft. (30.5m) | 1 roll (cont.) | B30-R10000 |
| BBP37,35, 31, 33 | Fig. 33 | B30C-2250-595-OR | B-595 | Orange | 2.250 (57.5) | 100ft. (30.5m) | 1 roll (cont.) | B30-R10000 |
| BBP37,35, 31, 33 | Fig. 33 | B30C-3000-595-OR | B-595 | Orange | 3.000 (76.2) | 100ft. (30.5m) | 1 roll (cont.) | B30-R10000 ✕ |
| BBP37,35, 31, 33 | Fig. 33 | B30C-4000-595-OR | B-595 | Orange | 4.000 (101.6) | 100ft. (30.5m) | 1 roll (cont.) | B30-R10000 ✕ |
| BBP37,35, 31, 33 | Fig. 33 | B30C-500-595-BK | B-595 | Black | 0.500 (12.7) | 100ft. (30.5m) | 1 roll (cont.) | B30-R10000-WT |
| BBP37,35, 31, 33 | Fig. 33 | B30C-1125-595-BK | B-595 | Black | 1.125 (28.6) | 100ft. (30.5m) | 1 roll (cont.) | B30-R10000-WT |
| BBP37,35, 31, 33 | Fig. 33 | B30C-2250-595-BK | B-595 | Black | 2.250 (57.5) | 100ft. (30.5m) | 1 roll (cont.) | B30-R10000-WT |
| BBP37,35, 31, 33 | Fig. 33 | B30C-3000-595-BK | B-595 | Black | 3.000 (76.2) | 100ft. (30.5m) | 1 roll (cont.) | B30-R10000-WT ✕ |
| BBP37,35, 31, 33 | Fig. 33 | B30C-4000-595-BK | B-595 | Black | 4.000 (101.6) | 100ft. (30.5m) | 1 roll (cont.) | B30-R10000-WT ✕ |
| BBP37,35, 31, 33 | Fig. 33 | B30C-500-595-BR | B-595 | Brown | 0.500 (12.7) | 100ft. (30.5m) | 1 roll (cont.) | B30-R10000-WT |
| BBP37,35, 31, 33 | Fig. 33 | B30C-1125-595-BR | B-595 | Brown | 1.125 (28.6) | 100ft. (30.5m) | 1 roll (cont.) | B30-R10000-WT |
| BBP37,35, 31, 33 | Fig. 33 | B30C-2250-595-BR | B-595 | Brown | 2.250 (57.5) | 100ft. (30.5m) | 1 roll (cont.) | B30-R10000-WT |
| BBP37,35, 31, 33 | Fig. 33 | B30C-3000-595-BR | B-595 | Brown | 3.000 (76.2) | 100ft. (30.5m) | 1 roll (cont.) | B30-R10000-WT ✕ |
| BBP37,35, 31, 33 | Fig. 33 | B30C-4000-595-BR | B-595 | Brown | 4.000 (101.6) | 100ft. (30.5m) | 1 roll (cont.) | B30-R10000-WT ✕ |
| BBP37,35, 31, 33 | Fig. 33 | B30C-500-595-GD | B-595 | Gold | 0.500 (12.7) | 100ft. (30.5m) | 1 roll (cont.) | B30-R10000 |
| BBP37,35, 31, 33 | Fig. 33 | B30C-1125-595-GD | B-595 | Gold | 1.125 (28.6) | 100ft. (30.5m) | 1 roll (cont.) | B30-R10000 |
| BBP37,35, 31, 33 | Fig. 33 | B30C-2250-595-GD | B-595 | Gold | 2.250 (57.5) | 100ft. (30.5m) | 1 roll (cont.) | B30-R10000 |
| BBP37,35, 31, 33 | Fig. 33 | B30C-3000-595-GD | B-595 | Gold | 3.000 (76.2) | 100ft. (30.5m) | 1 roll (cont.) | B30-R10000 ✕ |
| BBP37,35, 31, 33 | Fig. 33 | B30C-4000-595-GD | B-595 | Gold | 4.000 (101.6) | 100ft. (30.5m) | 1 roll (cont.) | B30-R10000 ✕ |
| BBP37,35, 31, 33 | Fig. 33 | B30C-500-595-GY | B-595 | Gray | 0.500 (12.7) | 100ft. (30.5m) | 1 roll (cont.) | B30-R10000 |
| BBP37,35, 31, 33 | Fig. 33 | B30C-1125-595-GY | B-595 | Gray | 1.125 (28.6) | 100ft. (30.5m) | 1 roll (cont.) | B30-R10000 |
| BBP37,35, 31, 33 | Fig. 33 | B30C-2250-595-GY | B-595 | Gray | 2.250 (57.5) | 100ft. (30.5m) | 1 roll (cont.) | B30-R10000 |
| BBP37,35, 31, 33 | Fig. 33 | B30C-3000-595-GY | B-595 | Gray | 3.000 (76.2) | 100ft. (30.5m) | 1 roll (cont.) | B30-R10000 ✕ |
| BBP37,35, 31, 33 | Fig. 33 | B30C-4000-595-GY | B-595 | Gray | 4.000 (101.6) | 100ft. (30.5m) | 1 roll (cont.) | B30-R10000 ✕ |
| BBP37,35, 31, 33 | Fig. 33 | B30C-500-595-PL | B-595 | Purple | 0.500 (12.7) | 100ft. (30.5m) | 1 roll (cont.) | B30-R10000-WT |
| BBP37,35, 31, 33 | Fig. 33 | B30C-1125-595-PL | B-595 | Purple | 1.125 (28.6) | 100ft. (30.5m) | 1 roll (cont.) | B30-R10000-WT |
| BBP37,35, 31, 33 | Fig. 33 | B30C-2250-595-PL | B-595 | Purple | 2.250 (57.5) | 100ft. (30.5m) | 1 roll (cont.) | B30-R10000-WT |
| BBP37,35, 31, 33 | Fig. 33 | B30C-3000-595-PL | B-595 | Purple | 3.000 (76.2) | 100ft. (30.5m) | 1 roll (cont.) | B30-R10000-WT ✕ |
| BBP37,35, 31, 33 | Fig. 33 | B30C-4000-595-PL | B-595 | Purple | 4.000 (101.6) | 100ft. (30.5m) | 1 roll (cont.) | B30-R10000-WT ✕ |
| BBP37,35, 31, 33 | Fig. 33 | B30C-500-595-CL | B-595 | Clear | 0.500 (12.7) | 100ft. (30.5m) | 1 roll (cont.) | B30-R10000 |
| BBP37,35, 31, 33 | Fig. 33 | B30C-1125-595-CL | B-595 | Clear | 1.125 (28.6) | 100ft. (30.5m) | 1 roll (cont.) | B30-R10000 |
| BBP37,35, 31, 33 | Fig. 33 | B30C-2250-595-CL | B-595 | Clear | 2.250 (57.5) | 100ft. (30.5m) | 1 roll (cont.) | B30-R10000 |
| BBP37,35, 31, 33 | Fig. 33 | B30C-3000-595-CL | B-595 | Clear | 3.000 (76.2) | 100ft. (30.5m) | 1 roll (cont.) | B30-R10000 ✕ |
| BBP37,35, 31, 33 | Fig. 33 | B30C-4000-595-CL | B-595 | Clear | 4.000 (101.6) | 100ft. (30.5m) | 1 roll (cont.) | B30-R10000 ✕ |

U.S. Patent Nos. 5,823,689; 6,570,602. Additional Patents Pending.

Low-Halide Polyester (B-569)

- Low-halide content for labeling stainless steel pipes and surfaces
- Applies best to very smooth surfaces and ideal for mounting to rigid panels

Service Temp: -40°F to 212°F Application Temp: 0°F to 212°F
Average Outdoor Durability: 3-5 years

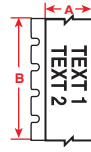


Figure 33



| Fits Printer Model(s) | Diagram | Catalog # | B# | Color | Label Width A Inch (mm) | Roll Length B Feet (m) | Labels Per Roll | Rec. Ribbon |
|-----------------------|---------|------------------|-------|------------|----------------------------|---------------------------|-----------------|-----------------|
| BBP37,35, 31, 33 | Fig. 33 | B30C-500-569-WT | B-569 | White | 0.500 (12.7) | 100ft. (30.5m) | 1 roll (cont.) | B30-R10000 |
| BBP37,35, 31, 33 | Fig. 33 | B30C-1125-569-WT | B-569 | White | 1.125 (28.6) | 100ft. (30.5m) | 1 roll (cont.) | B30-R10000 |
| BBP37,35, 31, 33 | Fig. 33 | B30C-2250-569-WT | B-569 | White | 2.250 (57.5) | 100ft. (30.5m) | 1 roll (cont.) | B30-R10000 |
| BBP37,35, 31, 33 | Fig. 33 | B30C-3000-569-WT | B-569 | White | 3.000 (76.2) | 100ft. (30.5m) | 1 roll (cont.) | B30-R10000 |
| BBP37,35, 31, 33 | Fig. 33 | B30C-4000-569-WT | B-569 | White | 4.000 (101.6) | 100ft. (30.5m) | 1 roll (cont.) | B30-R10000 ✕ |
| BBP37,35, 31, 33 | Fig. 33 | B30C-500-569-YL | B-569 | Yellow | 0.500 (12.7) | 100ft. (30.5m) | 1 roll (cont.) | B30-R10000 |
| BBP37,35, 31, 33 | Fig. 33 | B30C-1125-569-YL | B-569 | Yellow | 1.125 (28.6) | 100ft. (30.5m) | 1 roll (cont.) | B30-R10000 |
| BBP37,35, 31, 33 | Fig. 33 | B30C-2250-569-YL | B-569 | Yellow | 2.250 (57.5) | 100ft. (30.5m) | 1 roll (cont.) | B30-R10000 |
| BBP37,35, 31, 33 | Fig. 33 | B30C-4000-569-YL | B-569 | Yellow | 4.000 (101.6) | 100ft. (30.5m) | 1 roll (cont.) | B30-R10000 ✕ |
| BBP37,35, 31, 33 | Fig. 33 | B30C-500-569-RD | B-569 | Red | 0.500 (12.7) | 100ft. (30.5m) | 1 roll (cont.) | B30-R10000-WT |
| BBP37,35, 31, 33 | Fig. 33 | B30C-1125-569-RD | B-569 | Red | 1.125 (28.6) | 100ft. (30.5m) | 1 roll (cont.) | B30-R10000-WT |
| BBP37,35, 31, 33 | Fig. 33 | B30C-2250-569-RD | B-569 | Red | 2.250 (57.5) | 100ft. (30.5m) | 1 roll (cont.) | B30-R10000-WT |
| BBP37,35, 31, 33 | Fig. 33 | B30C-4000-569-RD | B-569 | Red | 4.000 (101.6) | 100ft. (30.5m) | 1 roll (cont.) | B30-R10000-WT ✕ |
| BBP37,35, 31, 33 | Fig. 33 | B30C-500-569-BL | B-569 | Blue | 0.500 (12.7) | 100ft. (30.5m) | 1 roll (cont.) | B30-R10000-WT |
| BBP37,35, 31, 33 | Fig. 33 | B30C-1125-569-BL | B-569 | Blue | 1.125 (28.6) | 100ft. (30.5m) | 1 roll (cont.) | B30-R10000-WT |
| BBP37,35, 31, 33 | Fig. 33 | B30C-2250-569-BL | B-569 | Blue | 2.250 (57.5) | 100ft. (30.5m) | 1 roll (cont.) | B30-R10000-WT |
| BBP37,35, 31, 33 | Fig. 33 | B30C-4000-569-BL | B-569 | Blue | 4.000 (101.6) | 100ft. (30.5m) | 1 roll (cont.) | B30-R10000-WT ✕ |
| BBP37,35, 31, 33 | Fig. 33 | B30C-500-569-LB | B-569 | Light Blue | 0.500 (12.7) | 100ft. (30.5m) | 1 roll (cont.) | B30-R10000 |
| BBP37,35, 31, 33 | Fig. 33 | B30C-1125-569-LB | B-569 | Light Blue | 1.125 (28.6) | 100ft. (30.5m) | 1 roll (cont.) | B30-R10000 |
| BBP37,35, 31, 33 | Fig. 33 | B30C-2250-569-LB | B-569 | Light Blue | 2.250 (57.5) | 100ft. (30.5m) | 1 roll (cont.) | B30-R10000 |
| BBP37,35, 31, 33 | Fig. 33 | B30C-4000-569-LB | B-569 | Light Blue | 4.000 (101.6) | 100ft. (30.5m) | 1 roll (cont.) | B30-R10000 ✕ |
| BBP37,35, 31, 33 | Fig. 33 | B30C-500-569-SB | B-569 | Sky Blue | 0.500 (12.7) | 100ft. (30.5m) | 1 roll (cont.) | B30-R10000 |
| BBP37,35, 31, 33 | Fig. 33 | B30C-1125-569-SB | B-569 | Sky Blue | 1.125 (28.6) | 100ft. (30.5m) | 1 roll (cont.) | B30-R10000 |
| BBP37,35, 31, 33 | Fig. 33 | B30C-2250-569-SB | B-569 | Sky Blue | 2.250 (57.5) | 100ft. (30.5m) | 1 roll (cont.) | B30-R10000 |
| BBP37,35, 31, 33 | Fig. 33 | B30C-4000-569-SB | B-569 | Sky Blue | 4.000 (101.6) | 100ft. (30.5m) | 1 roll (cont.) | B30-R10000 ✕ |
| BBP37,35, 31, 33 | Fig. 33 | B30C-500-569-GN | B-569 | Green | 0.500 (12.7) | 100ft. (30.5m) | 1 roll (cont.) | B30-R10000-WT |
| BBP37,35, 31, 33 | Fig. 33 | B30C-1125-569-GN | B-569 | Green | 1.125 (28.6) | 100ft. (30.5m) | 1 roll (cont.) | B30-R10000-WT |
| BBP37,35, 31, 33 | Fig. 33 | B30C-2250-569-GN | B-569 | Green | 2.250 (57.5) | 100ft. (30.5m) | 1 roll (cont.) | B30-R10000-WT |
| BBP37,35, 31, 33 | Fig. 33 | B30C-4000-569-GN | B-569 | Green | 4.000 (101.6) | 100ft. (30.5m) | 1 roll (cont.) | B30-R10000-WT ✕ |
| BBP37,35, 31, 33 | Fig. 33 | B30C-500-569-OR | B-569 | Orange | 0.500 (12.7) | 100ft. (30.5m) | 1 roll (cont.) | B30-R10000 |
| BBP37,35, 31, 33 | Fig. 33 | B30C-1125-569-OR | B-569 | Orange | 1.125 (28.6) | 100ft. (30.5m) | 1 roll (cont.) | B30-R10000 |
| BBP37,35, 31, 33 | Fig. 33 | B30C-2250-569-OR | B-569 | Orange | 2.250 (57.5) | 100ft. (30.5m) | 1 roll (cont.) | B30-R10000 |
| BBP37,35, 31, 33 | Fig. 33 | B30C-4000-569-OR | B-569 | Orange | 4.000 (101.6) | 100ft. (30.5m) | 1 roll (cont.) | B30-R10000 ✕ |
| BBP37,35, 31, 33 | Fig. 33 | B30C-500-569-BK | B-569 | Black | 0.500 (12.7) | 100ft. (30.5m) | 1 roll (cont.) | B30-R10000-WT |
| BBP37,35, 31, 33 | Fig. 33 | B30C-1125-569-BK | B-569 | Black | 1.125 (28.6) | 100ft. (30.5m) | 1 roll (cont.) | B30-R10000-WT |
| BBP37,35, 31, 33 | Fig. 33 | B30C-2250-569-BK | B-569 | Black | 2.250 (57.5) | 100ft. (30.5m) | 1 roll (cont.) | B30-R10000-WT |
| BBP37,35, 31, 33 | Fig. 33 | B30C-4000-569-BK | B-569 | Black | 4.000 (101.6) | 100ft. (30.5m) | 1 roll (cont.) | B30-R10000-WT ✕ |
| BBP37,35, 31, 33 | Fig. 33 | B30C-500-569-BR | B-569 | Brown | 0.500 (12.7) | 100ft. (30.5m) | 1 roll (cont.) | B30-R10000-WT |
| BBP37,35, 31, 33 | Fig. 33 | B30C-1125-569-BR | B-569 | Brown | 1.125 (28.6) | 100ft. (30.5m) | 1 roll (cont.) | B30-R10000-WT |
| BBP37,35, 31, 33 | Fig. 33 | B30C-2250-569-BR | B-569 | Brown | 2.250 (57.5) | 100ft. (30.5m) | 1 roll (cont.) | B30-R10000-WT |
| BBP37,35, 31, 33 | Fig. 33 | B30C-4000-569-BR | B-569 | Brown | 4.000 (101.6) | 100ft. (30.5m) | 1 roll (cont.) | B30-R10000-WT ✕ |
| BBP37,35, 31, 33 | Fig. 33 | B30C-500-569-OC | B-569 | Ochre | 0.500 (12.7) | 100ft. (30.5m) | 1 roll (cont.) | B30-R10000 |
| BBP37,35, 31, 33 | Fig. 33 | B30C-1125-569-OC | B-569 | Ochre | 1.125 (28.6) | 100ft. (30.5m) | 1 roll (cont.) | B30-R10000 |
| BBP37,35, 31, 33 | Fig. 33 | B30C-2250-569-OC | B-569 | Ochre | 2.250 (57.5) | 100ft. (30.5m) | 1 roll (cont.) | B30-R10000 |
| BBP37,35, 31, 33 | Fig. 33 | B30C-4000-569-OC | B-569 | Ochre | 4.000 (101.6) | 100ft. (30.5m) | 1 roll (cont.) | B30-R10000 ✕ |
| BBP37,35, 31, 33 | Fig. 33 | B30C-500-569-TN | B-569 | Tan | 0.500 (12.7) | 100ft. (30.5m) | 1 roll (cont.) | B30-R10000 |
| BBP37,35, 31, 33 | Fig. 33 | B30C-1125-569-TN | B-569 | Tan | 1.125 (28.6) | 100ft. (30.5m) | 1 roll (cont.) | B30-R10000 |
| BBP37,35, 31, 33 | Fig. 33 | B30C-2250-569-TN | B-569 | Tan | 2.250 (57.5) | 100ft. (30.5m) | 1 roll (cont.) | B30-R10000 |
| BBP37,35, 31, 33 | Fig. 33 | B30C-4000-569-TN | B-569 | Tan | 4.000 (101.6) | 100ft. (30.5m) | 1 roll (cont.) | B30-R10000 ✕ |
| BBP37,35, 31, 33 | Fig. 33 | B30C-500-569-GY | B-569 | Gray | 0.500 (12.7) | 100ft. (30.5m) | 1 roll (cont.) | B30-R10000 |
| BBP37,35, 31, 33 | Fig. 33 | B30C-1125-569-GY | B-569 | Gray | 1.125 (28.6) | 100ft. (30.5m) | 1 roll (cont.) | B30-R10000 |
| BBP37,35, 31, 33 | Fig. 33 | B30C-2250-569-GY | B-569 | Gray | 2.250 (57.5) | 100ft. (30.5m) | 1 roll (cont.) | B30-R10000 |
| BBP37,35, 31, 33 | Fig. 33 | B30C-4000-569-GY | B-569 | Gray | 4.000 (101.6) | 100ft. (30.5m) | 1 roll (cont.) | B30-R10000 ✕ |
| BBP37,35, 31, 33 | Fig. 33 | B30C-500-569-PL | B-569 | Purple | 0.500 (12.7) | 100ft. (30.5m) | 1 roll (cont.) | B30-R10000-WT |
| BBP37,35, 31, 33 | Fig. 33 | B30C-1125-569-PL | B-569 | Purple | 1.125 (28.6) | 100ft. (30.5m) | 1 roll (cont.) | B30-R10000-WT |
| BBP37,35, 31, 33 | Fig. 33 | B30C-2250-569-PL | B-569 | Purple | 2.250 (57.5) | 100ft. (30.5m) | 1 roll (cont.) | B30-R10000-WT |
| BBP37,35, 31, 33 | Fig. 33 | B30C-4000-569-PL | B-569 | Purple | 4.000 (101.6) | 100ft. (30.5m) | 1 roll (cont.) | B30-R10000-WT ✕ |
| BBP37,35, 31, 33 | Fig. 33 | B30C-500-569-PK | B-569 | Pink | 0.500 (12.7) | 100ft. (30.5m) | 1 roll (cont.) | B30-R10000 |
| BBP37,35, 31, 33 | Fig. 33 | B30C-1125-569-PK | B-569 | Pink | 1.125 (28.6) | 100ft. (30.5m) | 1 roll (cont.) | B30-R10000 |
| BBP37,35, 31, 33 | Fig. 33 | B30C-2250-569-PK | B-569 | Pink | 2.250 (57.5) | 100ft. (30.5m) | 1 roll (cont.) | B30-R10000 |
| BBP37,35, 31, 33 | Fig. 33 | B30C-4000-569-PK | B-569 | Pink | 4.000 (101.6) | 100ft. (30.5m) | 1 roll (cont.) | B30-R10000 ✕ |
| BBP37,35, 31, 33 | Fig. 33 | B30C-500-569-CL | B-569 | Clear | 0.500 (12.7) | 100ft. (30.5m) | 1 roll (cont.) | B30-R10000 |
| BBP37,35, 31, 33 | Fig. 33 | B30C-1125-569-CL | B-569 | Clear | 1.125 (28.6) | 100ft. (30.5m) | 1 roll (cont.) | B30-R10000 |
| BBP37,35, 31, 33 | Fig. 33 | B30C-2250-569-CL | B-569 | Clear | 2.250 (57.5) | 100ft. (30.5m) | 1 roll (cont.) | B30-R10000 |
| BBP37,35, 31, 33 | Fig. 33 | B30C-4000-569-CL | B-569 | Clear | 4.000 (101.6) | 100ft. (30.5m) | 1 roll (cont.) | B30-R10000 ✕ |

Pre-Printed Pre-Cut Blank Sign Headers (B-595)

- Allows printer to create multicolor signs fast - in a single print pass
- Headers meet NFPA 70E, OSHA 1910.145 and ASME/ANSI Z535 standards
- Indoor/outdoor grade material conforms to rough, highly textured and “difficult to adhere to” surfaces

Service Temp: -40°F to 180°F Application Temp: 0°F to 180°F
 Average Outdoor Durability: 8-10 years
 Agency Approvals: **RoHS**

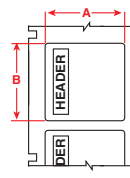


Figure 70



| Fits Printer Model(s) | Diagram | Catalog # | B# | Material | Header | Label Height A Inch (mm) | Label Width B Inch (mm) | Labels Per Row | Labels Per Roll | Rec. Ribbon |
|-----------------------|---------|--------------------|-------|----------|----------------|--------------------------|-------------------------|----------------|-----------------|-------------|
| BBP37,35, 31, 33 | Fig. 70 | B30-241-595-OSHADA | B-595 | Vinyl | DANGER | 2.250 (57.5) | 3.000 (76.2) | 1 | 300 | B30-R10000 |
| BBP37,35, 31, 33 | Fig. 70 | B30-25-595-OSHADA | B-595 | Vinyl | | 4.000 (101.6) | 6.000 (152.4) | 1 | 175 | B30-R10000 |
| BBP37,35, 31, 33 | Fig. 70 | B30-241-595-OSHACA | B-595 | Vinyl | CAUTION | 2.250 (57.5) | 3.000 (76.2) | 1 | 300 | B30-R10000 |
| BBP37,35, 31, 33 | Fig. 70 | B30-25-595-OSHACA | B-595 | Vinyl | | 4.000 (101.6) | 6.000 (152.4) | 1 | 175 | B30-R10000 |
| BBP37,35, 31, 33 | Fig. 70 | B30-241-595-ANSICA | B-595 | Vinyl | CAUTION | 2.250 (57.5) | 3.000 (76.2) | 1 | 300 | B30-R10000 |
| BBP37,35, 31, 33 | Fig. 70 | B30-25-595-ANSICA | B-595 | Vinyl | | 4.000 (101.6) | 6.000 (152.4) | 1 | 175 | B30-R10000 |
| BBP37,35, 31, 33 | Fig. 70 | B30-241-595-ANSIDA | B-595 | Vinyl | DANGER | 2.250 (57.5) | 3.000 (76.2) | 1 | 300 | B30-R10000 |
| BBP37,35, 31, 33 | Fig. 70 | B30-25-595-ANSIDA | B-595 | Vinyl | | 4.000 (101.6) | 6.000 (152.4) | 1 | 175 | B30-R10000 |
| BBP37,35, 31, 33 | Fig. 70 | B30-241-595-ANSIWA | B-595 | Vinyl | WARNING | 2.250 (57.5) | 3.000 (76.2) | 1 | 300 | B30-R10000 |
| BBP37,35, 31, 33 | Fig. 70 | B30-25-595-ANSIWA | B-595 | Vinyl | | 4.000 (101.6) | 6.000 (152.4) | 1 | 175 | B30-R10000 |
| BBP37,35, 31, 33 | Fig. 70 | B30-241-595-ANSINO | B-595 | Vinyl | NOTICE | 2.250 (57.5) | 3.000 (76.2) | 1 | 300 | B30-R10000 |
| BBP37,35, 31, 33 | Fig. 70 | B30-25-595-ANSINO | B-595 | Vinyl | | 4.000 (101.6) | 6.000 (152.4) | 1 | 175 | B30-R10000 |
| BBP37,35, 31, 33 | Fig. 70 | B30-242-595-BLNKWT | B-595 | Vinyl | | 1.125 (28.6) * | 2.850 (72.4) | 1 | 300 | B30-R10000 |
| BBP37,35, 31, 33 | Fig. 70 | B30-241-595-BLNKWT | B-595 | Vinyl | | 2.250 (57.5) | 3.000 (76.2) | 1 | 300 | B30-R10000 |
| BBP37,35, 31, 33 | Fig. 70 | B30-219-595-BLNKWT | B-595 | Vinyl | | 2.250 (57.5) * | 3.850 (97.8) | 1 | 250 | B30-R10000 |
| BBP37,35, 31, 33 | Fig. 70 | B30-25-595-BLNKWT | B-595 | Vinyl | | 4.000 (101.6) | 6.000 (152.4) | 1 | 175 | B30-R10000 |
| BBP37,35, 31, 33 | Fig. 70 | B30-241-595-BLNKYL | B-595 | Vinyl | | 2.250 (57.5) | 3.000 (76.2) | 1 | 300 | B30-R10000 |
| BBP37,35, 31, 33 | Fig. 70 | B30-25-595-BLNKYL | B-595 | Vinyl | | 4.000 (101.6) | 6.000 (152.4) | 1 | 175 | B30-R10000 |

*Label pre-sized to fit blank rigid valve tags, but can also be used on its own as general purpose label. See page 13 for details on Valve Tags.

Non-Adhesive Tags (B-551)

- Non-adhesive semi-rigid card stock in pre-cut and continuous styles
- Tags are pre-cut with hole or easy to hole-punch, are micro-perforated between tags to separate cleanly, and some feature chamfered corners
- Snap-in plastic grommets available for extra strength around mounting hole (Catalog #20596, 100/bag)

Service Temp: -40°F to 193°F
 Average Outdoor Durability: Up to 2 years

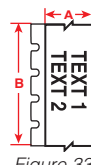


Figure 33



Figure 69

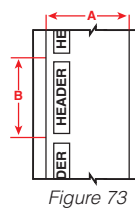
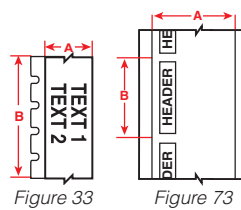


| Fits Printer Model(s) | Diagram | Catalog # | B# | Header | Tag Width A Inch (mm) | Tag Height B Inch (mm) | Tags Per Row | Tags Per Roll | Rec. Ribbon |
|-----------------------|---------|--------------------|-------|----------------|-----------------------|------------------------|----------------|---------------|-------------|
| BBP37,35, 31, 33 | Fig. 69 | B30-255-551-ANSIDA | B-551 | DANGER | 3.250 (82.6) | 5.750 (146.1) | 1 | 100 | B30-R10000 |
| BBP37,35, 31, 33 | Fig. 69 | B30-255-551-OSHADA | B-551 | DANGER | 3.250 (82.6) | 5.750 (146.1) | 1 | 100 | B30-R10000 |
| BBP37,35, 31, 33 | Fig. 69 | B30-255-551-ANSICA | B-551 | CAUTION | 3.250 (82.6) | 5.750 (146.1) | 1 | 100 | B30-R10000 |
| BBP37,35, 31, 33 | Fig. 69 | B30-255-551-WHT | B-551 | | 3.250 (82.6) | 5.750 (146.1) | 1 | 100 | B30-R10000 |
| BBP37,35, 31, 33 | Fig. 33 | B30C-2500-551-WT | B-551 | | 2.500 (63.5) | 50ft. (15.2m) | 1 roll (cont.) | | B30-R10000 |
| BBP37,35, 31, 33 | Fig. 33 | B30C-3250-551-WT | B-551 | | 3.250 (82.6) | 50ft. (15.2m) | 1 roll (cont.) | | B30-R10000 |
| BBP37,35, 31, 33 | Fig. 33 | B30C-4250-551-WT | B-551 | | 4.250 (107.9) | 50ft. (15.2m) | 1 roll (cont.) | | B30-R10000 |

ToughWash® Washdown Resistant Labels (B-854, B-855)

- Withstands high pressure, heat, harsh chemicals and numerous washdown cycles
- B-854 offers metal detectable layer to detect foreign debris in food stream
- Legible and long-lasting for even the toughest washdown cycles
- Ideal for use in the food & beverage industry

Service Temp: -40°F to 230°F
Agency approvals: **RoHS**



| Fits Printer Model(s) | Diagram | Catalog # | B# | Color | Label Width A Inch (mm) | Length B Inch (mm) | Labels Per Roll | Rec. Ribbon |
|---|---------|--------------------|-------|-------|-------------------------|--------------------|-----------------|-------------|
| B-854 ToughWash™ Metal Detectable Material | | | | | | | | |
| BBP37,35, 31, 33 | Fig. 33 | B30C-4000-854-WT | B-854 | | 4.000 (101.06) | 50ft. (15.2 m) | 1 roll (cont.) | B30-R6000 |
| BBP37,35, 31, 33 | Fig. 33 | B30C-4000-854-YL | B-854 | | 4.000 (101.06) | 50ft. (15.2 m) | 1 roll (cont.) | B30-R6000 |
| BBP37,35, 31, 33 | Fig. 73 | B30C-4000-854-WARN | B-854 | | 4.000 (101.06) | 6.250 (158.8) | 100 | B30-R6000 |
| BBP37,35, 31, 33 | Fig. 73 | B30C-4000-854-DANG | B-854 | | 4.000 (101.06) | 6.250 (158.8) | 100 | B30-R6000 |
| BBP37,35, 31, 33 | Fig. 73 | B30C-4000-854-CAUT | B-854 | | 4.000 (101.06) | 6.250 (158.8) | 100 | B30-R6000 |
| B-855 ToughWash™ Material | | | | | | | | |
| BBP37,35, 31, 33 | Fig. 33 | B30C-1125-855-WT | B-855 | | 1.125 (28.6) | 50ft. (15.2 m) | 1 roll (cont.) | B30-R6000 |
| BBP37,35, 31, 33 | Fig. 33 | B30C-2250-855-WT | B-855 | | 2.250 (57.5) | 50ft. (15.2 m) | 1 roll (cont.) | B30-R6000 |
| BBP37,35, 31, 33 | Fig. 33 | B30C-4000-855-WT | B-855 | | 4.000 (101.06) | 50ft. (15.2 m) | 1 roll (cont.) | B30-R6000 |
| BBP37,35, 31, 33 | Fig. 33 | B30C-1125-855-YL | B-855 | | 1.125 (28.6) | 50ft. (15.2 m) | 1 roll (cont.) | B30-R6000 |
| BBP37,35, 31, 33 | Fig. 33 | B30C-2250-855-YL | B-855 | | 2.250 (57.5) | 50ft. (15.2 m) | 1 roll (cont.) | B30-R6000 |
| BBP37,35, 31, 33 | Fig. 33 | B30C-4000-855-YL | B-855 | | 4.000 (101.06) | 50ft. (15.2 m) | 1 roll (cont.) | B30-R6000 |
| BBP37,35, 31, 33 | Fig. 73 | B30C-4000-855-WARN | B-855 | | 4.000 (101.06) | 6.250 (158.8) | 100 | B30-R6000 |
| BBP37,35, 31, 33 | Fig. 73 | B30C-4000-855-DANG | B-855 | | 4.000 (101.06) | 6.250 (158.8) | 100 | B30-R6000 |
| BBP37,35, 31, 33 | Fig. 73 | B30C-4000-855-CAUT | B-855 | | 4.000 (101.06) | 6.250 (158.8) | 100 | B30-R6000 |

Printable Magnetic Supply (B-509)

- Easiest and quickest material for removing and repositioning
- Non-adhesive magnetic material that can be printed on directly
- Ideal for reusable, repositionable, and lean / 5S identification applications

Service Temp: 0°F to 158°F
Average Outdoor Durability: 3 to 5 years



| Fits Printer Model(s) | Diagram | Catalog # | B# | Color | Label Width A Inch (mm) | Roll Length B Feet (m) | Labels Per Roll | Rec. Ribbon |
|-----------------------|---------|------------------|-------|--------|-------------------------|------------------------|-----------------|--------------|
| BBP37,35, 31, 33 | Fig. 33 | B30C-2500-509-WT | B-509 | White | 2.500 (63.5) | 25ft (7.62m) | 1 roll (cont.) | B30-R10000 |
| BBP37,35, 31, 33 | Fig. 33 | B30C-4250-509-WT | B-509 | White | 4.250 (107.8) | 25ft (7.62m) | 1 roll (cont.) | B30-R10000 ✕ |
| BBP37,35, 31, 33 | Fig. 33 | B30C-2500-509-YL | B-509 | Yellow | 2.500 (63.5) | 25ft (7.62m) | 1 roll (cont.) | B30-R10000 |
| BBP37,35, 31, 33 | Fig. 33 | B30C-4250-509-YL | B-509 | Yellow | 4.250 (107.8) | 25ft (7.62m) | 1 roll (cont.) | B30-R10000 ✕ |

ToughStripe® Printable Floor Marking Tape (B-483 with overlamine)

- Revolutionary new B-483 material has ultra aggressive adhesive
- Withstands forklift and pallet jack traffic without tearing or lifting
- Easy 3-step process: print label, position on floor, apply overlamine
- Each roll ships with a roll of clear overlamine which must be applied over printed label and onto appropriate surface for best performance

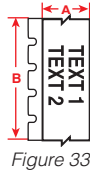


Figure 33



Service Temp: -40°F to 248°F
Agency Approvals:

| Fits Printer Model(s) | Diagram | Catalog # | B# | Color | Label Width A Inch (mm) | Roll Length B Feet (m) | Labels Per Roll | Rec. Ribbon |
|-----------------------|---------|--------------------|-------|--------|-------------------------|------------------------|-----------------|--------------|
| BBP37,35 | Fig. 33 | B30C-1125-483BK-KT | B-483 | White | 1.125 (28.6) | 100ft. (30.5m) | 1 Roll (cont.) | B30-R6000 |
| BBP37,35 | Fig. 33 | B30C-1125-483BL-KT | B-483 | White | 2.250 (57.5) | 100ft. (30.5m) | 1 Roll (cont.) | B30-R6000 |
| BBP37,35 | Fig. 33 | B30C-1125-483GN-KT | B-483 | White | 3.000 (76.2) | 100ft. (30.5m) | 1 Roll (cont.) | B30-R6000 |
| BBP37,35 | Fig. 33 | B30C-1125-483OR-KT | B-483 | White | 4.000 (101.6) | 100ft. (30.5m) | 1 Roll (cont.) | B30-R6000 |
| BBP37,35 | Fig. 33 | B30C-1125-483RD-KT | B-483 | Yellow | 1.125 (28.6) | 100ft. (30.5m) | 1 Roll (cont.) | B30-R6000 |
| BBP37,35 | Fig. 33 | B30C-1125-483WT-KT | B-483 | Yellow | 2.250 (57.5) | 100ft. (30.5m) | 1 Roll (cont.) | B30-R6000 |
| BBP37,35 | Fig. 33 | B30C-1125-483YL-KT | B-483 | Yellow | 3.000 (76.2) | 100ft. (30.5m) | 1 Roll (cont.) | B30-R6000 |
| BBP37,35 | Fig. 33 | B30C-2250-483BK-KT | B-483 | Yellow | 4.000 (101.6) | 100ft. (30.5m) | 1 Roll (cont.) | B30-R6000 |
| BBP37,35 | Fig. 33 | B30C-2250-483BL-KT | B-483 | Red | 1.125 (28.6) | 100ft. (30.5m) | 1 Roll (cont.) | B30-R4400-WT |
| BBP37,35 | Fig. 33 | B30C-2250-483GN-KT | B-483 | Red | 2.250 (57.5) | 100ft. (30.5m) | 1 Roll (cont.) | B30-R4400-WT |
| BBP37,35 | Fig. 33 | B30C-2250-483OR-KT | B-483 | Red | 4.000 (101.6) | 100ft. (30.5m) | 1 Roll (cont.) | B30-R4400-WT |
| BBP37,35 | Fig. 33 | B30C-2250-483RD-KT | B-483 | Blue | 1.125 (28.6) | 100ft. (30.5m) | 1 Roll (cont.) | B30-R4400-WT |
| BBP37,35 | Fig. 33 | B30C-2250-483WT-KT | B-483 | Blue | 2.250 (57.5) | 100ft. (30.5m) | 1 Roll (cont.) | B30-R4400-WT |
| BBP37,35 | Fig. 33 | B30C-2250-483YL-KT | B-483 | Blue | 4.000 (101.6) | 100ft. (30.5m) | 1 Roll (cont.) | B30-R4400-WT |
| BBP37,35 | Fig. 33 | B30C-3000-483WT-KT | B-483 | Green | 1.125 (28.6) | 100ft. (30.5m) | 1 Roll (cont.) | B30-R4400-WT |
| BBP37,35 | Fig. 33 | B30C-3000-483YL-KT | B-483 | Green | 2.250 (57.5) | 100ft. (30.5m) | 1 Roll (cont.) | B30-R4400-WT |
| BBP37,35 | Fig. 33 | B30C-4000-483BK-KT | B-483 | Green | 4.000 (101.6) | 100ft. (30.5m) | 1 Roll (cont.) | B30-R4400-WT |
| BBP37,35 | Fig. 33 | B30C-4000-483BL-KT | B-483 | Black | 1.125 (28.6) | 100ft. (30.5m) | 1 Roll (cont.) | B30-R4400-WT |
| BBP37,35 | Fig. 33 | B30C-4000-483GN-KT | B-483 | Black | 2.250 (57.5) | 100ft. (30.5m) | 1 Roll (cont.) | B30-R4400-WT |
| BBP37,35 | Fig. 33 | B30C-4000-483OR-KT | B-483 | Black | 4.000 (101.6) | 100ft. (30.5m) | 1 Roll (cont.) | B30-R4400-WT |
| BBP37,35 | Fig. 33 | B30C-4000-483RD-KT | B-483 | Orange | 1.125 (28.6) | 100ft. (30.5m) | 1 Roll (cont.) | B30-R6000 |
| BBP37,35 | Fig. 33 | B30C-4000-483WT-KT | B-483 | Orange | 2.250 (57.5) | 100ft. (30.5m) | 1 Roll (cont.) | B30-R6000 |
| BBP37,35 | Fig. 33 | B30C-4000-483YL-KT | B-483 | Orange | 4.000 (101.6) | 100ft. (30.5m) | 1 Roll (cont.) | B30-R6000 |

Repositionable Vinyl (B-581)

- Aggressive adhesive stays in place but removes cleanly without leaving adhesive residue
- Ideal for temporary, removable and repositionable labels, such as 5S and lean inventory labels

Service temp: -40°F to 180°F Application temp: 50°F to 180°F
Average Outdoor Durability: 5 years



Figure 33



| Fits Printer Model(s) | Diagram | Catalog # | B# | Color | Label Width A Inch (mm) | Roll Length B Feet (m) | Labels Per Roll | Rec. Ribbon |
|-----------------------|---------|------------------|-------|--------|-------------------------|------------------------|-----------------|--------------|
| BBP37,35, 31, 33 | Fig. 33 | B30C-500-581-WT | B-581 | White | 0.500 (12.7) | 100ft. (30.5m) | 1 roll (cont.) | B30-R10000 |
| BBP37,35, 31, 33 | Fig. 33 | B30C-1125-581-WT | B-581 | White | 1.125 (28.6) | 100ft. (30.5m) | 1 roll (cont.) | B30-R10000 |
| BBP37,35, 31, 33 | Fig. 33 | B30C-2250-581-WT | B-581 | White | 2.250 (57.5) | 100ft. (30.5m) | 1 roll (cont.) | B30-R10000 |
| BBP37,35, 31, 33 | Fig. 33 | B30C-4000-581-WT | B-581 | White | 4.000 (101.6) | 100ft. (30.5m) | 1 roll (cont.) | B30-R10000 ✕ |
| BBP37,35, 31, 33 | Fig. 33 | B30C-500-581-YL | B-581 | Yellow | 0.500 (12.7) | 100ft. (30.5m) | 1 roll (cont.) | B30-R10000 |
| BBP37,35, 31, 33 | Fig. 33 | B30C-1125-581-YL | B-581 | Yellow | 1.125 (28.6) | 100ft. (30.5m) | 1 roll (cont.) | B30-R10000 |
| BBP37,35, 31, 33 | Fig. 33 | B30C-2250-581-YL | B-581 | Yellow | 2.250 (57.5) | 100ft. (30.5m) | 1 roll (cont.) | B30-R10000 |
| BBP37,35, 31, 33 | Fig. 33 | B30C-4000-581-YL | B-581 | Yellow | 4.000 (101.6) | 100ft. (30.5m) | 1 roll (cont.) | B30-R10000 ✕ |

Retro Reflective Tape (B-584)

- Highly reflective material shines back brightly when struck by light
- Ideal for labeling outdoor utility pedestals, hard hats, jobsite equipment and roof-top equipment
- Recommended for low light or inclement weather conditions

Service Temp: -40°F to 158°F
 Application Temp: 0°F to 158°F (yellow & orange), 50°F to 158°F (silver)
 Average Outdoor Durability: 4 to 6 years

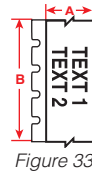


Figure 33



| Fits Printer Model(s) | Diagram | Catalog # | B# | Color | Label Width A Inch (mm) | Roll Length B Feet (m) | Labels Per Roll | Rec. Ribbon |
|-----------------------|---------|------------------|-------|--------|-------------------------|------------------------|-----------------|--------------|
| BBP37,35, 31, 33 | Fig. 33 | B30C-1125-584-SL | B-584 | Silver | 1.125 (28.6) | 50ft. (15.2m) | 1 roll (cont.) | B30-R10000 |
| BBP37,35, 31, 33 | Fig. 33 | B30C-2250-584-SL | B-584 | Silver | 2.250 (57.5) | 50ft. (15.2m) | 1 roll (cont.) | B30-R10000 |
| BBP37,35, 31, 33 | Fig. 33 | B30C-4000-584-SL | B-584 | Silver | 4.000 (101.6) | 50ft. (15.2m) | 1 roll (cont.) | B30-R10000 ✕ |
| BBP37,35, 31, 33 | Fig. 33 | B30C-1125-584-YL | B-584 | Yellow | 1.125 (28.6) | 50ft. (15.2m) | 1 roll (cont.) | B30-R10000 |
| BBP37,35, 31, 33 | Fig. 33 | B30C-2250-584-YL | B-584 | Yellow | 2.250 (57.5) | 50ft. (15.2m) | 1 roll (cont.) | B30-R10000 |
| BBP37,35, 31, 33 | Fig. 33 | B30C-4000-584-YL | B-584 | Yellow | 4.000 (101.6) | 50ft. (15.2m) | 1 roll (cont.) | B30-R10000 ✕ |
| BBP37,35, 31, 33 | Fig. 33 | B30C-1125-584-OR | B-584 | Orange | 1.125 (28.6) | 50ft. (15.2m) | 1 roll (cont.) | B30-R10000 |
| BBP37,35, 31, 33 | Fig. 33 | B30C-2250-584-OR | B-584 | Orange | 2.250 (57.5) | 50ft. (15.2m) | 1 roll (cont.) | B30-R10000 |
| BBP37,35, 31, 33 | Fig. 33 | B30C-4000-584-OR | B-584 | Orange | 4.000 (101.6) | 50ft. (15.2m) | 1 roll (cont.) | B30-R10000 ✕ |

BradyGlo™ High-Intensity Photoluminescent Tape (B-526)

- For glow-in-the-dark identification up to 10 hours
- Designed for directional and evacuation marking and equipment marking
- Ideal for marking emergency utility shut-offs, fire extinguishers, alarm pulls and vital equipment controls
- Complies with indoor use requirements specified in RS 6-1 and 6-1A of New York Local Law 26

Service Temp: -40°F to 140°F Application Temp: 40°F to 140°F



Figure 33



| Fits Printer Model(s) | Diagram | Catalog # | B# | Color | Label Width A Inch (mm) | Roll Length B Feet (m) | Labels Per Roll | Rec. Ribbon |
|-----------------------|---------|---------------|-------|----------------|-------------------------|------------------------|-----------------|--------------|
| BBP37,35, 31, 33 | Fig. 33 | B30C-1125-526 | B-526 | Luminous Green | 1.125 (28.6) | 50ft. (15.2m) | 1 roll (cont.) | B30-R10000 |
| BBP37,35, 31, 33 | Fig. 33 | B30C-2250-526 | B-526 | Luminous Green | 2.250 (57.5) | 50ft. (15.2m) | 1 roll (cont.) | B30-R10000 |
| BBP37,35, 31, 33 | Fig. 33 | B30C-4000-526 | B-526 | Luminous Green | 4.000 (101.6) | 50ft. (15.2m) | 1 roll (cont.) | B30-R10000 ✕ |

Cold Temperature Application Material (B-549)

- Special adhesive permanently adheres to extremely cold surfaces
- Can be applied in -10°F and lasts in -40°F
- Ideal for cold storage warehouses, coolers, freezers and short-term winter outdoor use

Service Temp: -40°F to 212°F Application Temp: -10°F to 212°F
 Average Outdoor Durability: Up to 1 year



Figure 33



| Fits Printer Model(s) | Diagram | Catalog # | B# | Color | Label Width A Inch (mm) | Roll Length B Feet (m) | Labels Per Roll | Rec. Ribbon |
|-----------------------|---------|------------------|-------|--------|-------------------------|------------------------|-----------------|--------------|
| BBP37,35, 31, 33 | Fig. 33 | B30C-1125-549-WT | B-549 | White | 1.125 (28.6) | 100ft. (30.5m) | 1 roll (cont.) | B30-R10000 |
| BBP37,35, 31, 33 | Fig. 33 | B30C-2250-549-WT | B-549 | White | 2.250 (57.5) | 100ft. (30.5m) | 1 roll (cont.) | B30-R10000 |
| BBP37,35, 31, 33 | Fig. 33 | B30C-4000-549-WT | B-549 | White | 4.000 (101.6) | 100ft. (30.5m) | 1 roll (cont.) | B30-R10000 ✕ |
| BBP37,35, 31, 33 | Fig. 33 | B30C-1125-549-YL | B-549 | Yellow | 1.125 (28.6) | 100ft. (30.5m) | 1 roll (cont.) | B30-R10000 |
| BBP37,35, 31, 33 | Fig. 33 | B30C-2250-549-YL | B-549 | Yellow | 2.250 (57.5) | 100ft. (30.5m) | 1 roll (cont.) | B30-R10000 |
| BBP37,35, 31, 33 | Fig. 33 | B30C-4000-549-YL | B-549 | Yellow | 4.000 (101.6) | 100ft. (30.5m) | 1 roll (cont.) | B30-R10000 ✕ |

Circle Gauge Labels (B-595)

- Create circle gauge labels using the built in Circle Gauge App on the BBP®37 printer with white tape and multi-colored paneled ribbons
- Create labels to the specific diameter and range of values for your gauge - small or large gauges
- App allows you to create in-zone, out-of-zone, caution zone(s) or all three
- Multiple gauge labels can be printed/cut within a single ribbon panel to optimize ribbon usage
- Specify center hole size to facilitate accurate label placement and visibility of info that may be printed on your gauge



Label Supply for Creating Circle Gauge Labels

| Fits Printer Model(s) | Catalog # | Color | Size |
|-----------------------|------------------|-------|------------------|
| BBP37,35* | B30C-4000-595-WT | White | 4.0' x 100 ft. ✂ |

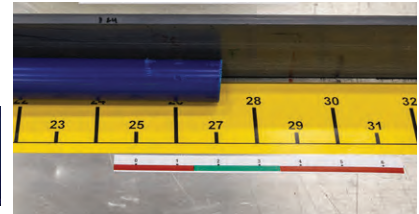
Ribbons for Creating Circle Gauge Labels

| Fits Printer Model(s) | Catalog # | Color | Size |
|-----------------------|-------------------|-----------------------------------|---------------------------------|
| BBP37,35 | B30-R10000-GR-8 | Green, Red Ribbon | 8" panel length, 100 panel sets |
| BBP37,35 | B30-R10000-KRYG-8 | Black, Red, Yellow & Green Ribbon | 8" panel length, 50 panel sets |
| BBP37,35 | B30-R10000-KRBG-8 | Black, Red, Blue and Green Ribbon | 8" panel length, 50 panel sets |

* Supply fits BBP35, 37 for this application, fits BBP35, 37, 31, 33 for other applications. Cutting circular shape enabled on BBP37 model only.

Gradient "Ruler" Labels (B-595)

- Create accurate scale or "ruler" labels using the built in Gradient Label App on the printer with continuous supplies
- Specify units in inches or millimeters, and choose from several interval tick mark options
- Include multiple colors on your label for multiple "zones"
- For scales longer than 7 feet (for example: labeling a large tank) combine multiple strips and set start point on second label to start where first label left off



Most Common Supplies for Making Gradient Ruler Labels (1 print color)

| Fits Printer Model(s) | Catalog # | Color | Size | Description |
|-----------------------|------------------|--------------|--------------------|---|
| BBP37,35* | B30C-4000-595-WT | White | 4.0' x 100 ft. | for larger applications such as tank /vessel labeling ✂ |
| BBP37,35* | B30C-2250-595-WT | White | 2.25' x 100 ft. | for larger applications such as tank /vessel labeling |
| BBP37,35* | B30C-1125-595-WT | White | 1.125' x 100 ft. | for smaller applications such as machinery labeling |
| BBP37,35* | B30C-500-595-WT | White | 0.50' x 100 ft. | for smaller applications such as machinery labeling |
| BBP37,35* | B30C-4000-595-YL | Yellow | 4.0' x 100 ft. | for smaller applications such as machinery labeling ✂ |
| BBP37,35* | B30C-2250-595-YL | Yellow | 2.25' x 100 ft. | for smaller applications such as machinery labeling |
| BBP37,35* | B30C-1125-595-YL | Yellow | 1.125' x 100 ft. | for smaller applications such as machinery labeling |
| BBP37,35* | B30C-500-595-YL | Yellow | 0.50' x 100 ft. | for smaller applications such as machinery labeling |
| BBP37,35* | B30-R10000 | Black Ribbon | Continuous 200 ft. | |
| BBP37,35* | B30-R10000-RD | Red Ribbon | Continuous 200 ft. | |

Other solid color tapes can be used with Black ribbon but those shown above are the most commonly used and offer highest visual contrast.

Most Common Supplies for Making Gradient Ruler Labels (multiple print color zones)

| Fits Printer Model(s) | Catalog # | Color | Size | Description |
|-----------------------|-------------------|-----------------------------------|---------------------------------|---|
| BBP37,35* | B30C-4000-595-WT | White | 4.0' x 100 ft. | for larger applications such as tank /vessel labeling ✂ |
| BBP37,35* | B30C-2250-595-WT | White | 2.25' x 100 ft. | for larger applications such as tank /vessel labeling |
| BBP37,35* | B30C-1125-595-WT | White | 1.125' x 100 ft. | for smaller applications such as machinery labeling |
| BBP37,35* | B30C-500-595-WT | White | 0.50' x 100 ft. | for smaller applications such as machinery labeling |
| BBP37,35* | B30-R10000-KR-8 | Black, Red Ribbon | 8" panel length, 100 panel sets | |
| BBP37,35 | B30-R10000-KRGB-8 | Black, Red, Green & Blue Ribbon | 8" panel length, 50 panel sets | |
| BBP37,35 | B30-R10000-KRYG-8 | Black, Red, Yellow & Green Ribbon | 8" panel length, 50 panel sets | |

* Supply fits BBP35, 37 for this application, fits BBP35, 37, 31, 33 for other applications.

Arc Flash Labels (B-595)

- Create multi-color Arc Flash labels using pre-printed header supplies and the built in Arc Flash App on the BBP®35 and BBP®37 printers or Brady Workstation
- Simple app prompts you for text on each panel variable then automatically lays out the complete label
- Create labels with your panel's data in all black text or with red variables
- Pre-printed header supplies available with red ANSI Danger or orange ANSI Warning formats
- Printer can also print complete label on white continuous supply using multi-color paneled ribbons



Supplies for creating Arc Flash Labels Using pre-printed headers

| Fits Printer Model(s) | Catalog # | Color | Size | Description |
|-----------------------|--------------------|---------------------|---------------------------------|---|
| BBP37,35 | B30-25-595-ANSIWA | ANSI WARNING Header | 4.0" x 6.0", 175 pcs | |
| BBP37,35 | B30-241-595-ANSIWA | ANSI WARNING Header | 2.25" x 3.0", 300 pcs | |
| BBP37,35 | B30-25-595-ANSIDA | ANSI DANGER Header | 4.0" x 6.0", 175 pcs | |
| BBP37,35 | B30-241-595-ANSIDA | ANSI DANGER Header | 2.25" x 3.0", 300 pcs | |
| BBP37,35* | B30-R10000 | Black Ribbon | Continuous 200 ft. | For black text beneath header |
| BBP37,35 | B30-R10000-KR-8 | Black & Red Ribbon | 8" panel length, 100 panel sets | For black text w/red variables beneath header |

Supplies for creating Arc Flash Labels Using White Continuous tape

| Fits Printer Model(s) | Catalog # | Color | Size | Description |
|-----------------------|-------------------|----------------------------------|---------------------------------|--|
| BBP37,35* | B30C-4000-595-WT | White | | For 4" x 6" arc flash labels |
| BBP37,35* | B30C-2250-595-WT | White | | For 2" x 3" arc flash labels |
| BBP37,35 | B30-R10000-KO-8 | Black & Orange Ribbon | 8" panel length, 100 panel sets | For ANSI Warning header with black text |
| BBP37,35 | B30-R10000-KRBO-8 | Black, Red, Blue & Orange Ribbon | 8" panel length, 50 panel sets | For ANSI Warning header with black or red text |
| BBP37,35 | B30-R10000-KR-8 | Black, Red | 8" panel length, 100 panel sets | For ANSI Danger header with black text |

* Supply fits BBP35, 37 for this application, fits BBP35, 37, 31, 33 for other applications.

Make Your Own Rigid Valve Tags

- Print labels on your Brady printer and apply them to these industrial-grade plastic tags
- Outdoor tag withstands temps -40°F to 180°F
- Die-cut (pre-cut) label supplies fit recessed area on tag



Labels & Ribbon for Making Valve Tags

| Catalog # | Color | Label Size | Labels per Roll |
|--------------------|-------|--------------------|--------------------|
| B30-219-595-BLNKWT | White | 2.25" x 3.85" | 250 pcs for LG tag |
| B30-242-595-BLNKWT | White | 1.125" x 2.85" | 300 pcs for SM tag |
| B30-R10000 | Black | Continuous 200 ft. | Print Ribbon |

Tag Sizes

| Description | Height Inch (mm) | Width Inch (mm) |
|-------------|------------------|-----------------|
| Large Tag | 2.500 (63.5) | 4.000 (101.6) |
| Small Tag | 1.500 (38.1) | 3.000 (76.2) |

| Fits Printer Model(s) | Small Tag Catalog # | Large Tag Catalog # | Color |
|-----------------------|---------------------|---------------------|---------------|
| BBP37,35, 31, 33 | 41920 | 41921 | Black |
| BBP37,35, 31, 33 | 41922 | 41923 | Yellow |
| BBP37,35, 31, 33 | 41924 | 41925 | Red |
| BBP37,35, 31, 33 | 41926 | 41927 | Blue |
| BBP37,35, 31, 33 | 41928 | 41929 | Green |
| BBP37,35, 31, 33 | 87694 | 87695 | Orange |
| BBP37,35, 31, 33 | 87696 | 87697 | White |
| BBP37,35, 31, 33 | 87698 | 87699 | Gray |
| BBP37,35, 31, 33 | 87710 | 87711 | Brown |
| BBP37,35, 31, 33 | 87712 | 87713 | Tan |
| BBP37,35, 31, 33 | 142133 | | Variety Pack* |

* Variety Pack combines 30 tags including at least one of each size and color. Perfect for evaluating which sizes and colors you need.

Blank Rigid Panels

- Create rigid labels and signs using adhesive output from your printer
- Ideal for labeling situations and surfaces where applying an adhesive label is difficult
- Panels are sized slightly larger than label output to facilitate centered and accurate placement of label on panel
- Labels can be hand-applied to panel or applied using a BLS1255 cold press laminator
- Panels are pre-drilled with holes in corners for mounting with screws or cable-ties
- Panels can also be mounted using foam tape or magnetic strips (available below)



| Catalog # | Material | Color | Sign Height Inch (mm) | Sign Length Inch (mm) | Qty |
|---|----------|--------|-----------------------|-----------------------|-----|
| Plastic Panels - rounded corners and and hole punched | | | | | |
| 13620 | Plastic | White | 4.250 (107.9) | 6.250 (158.8) | 10 |
| 146074 | Plastic | White | 4.250 (107.9) | 10.250 (260.4) | 10 |
| 146075 | Plastic | White | 4.250 (107.9) | 14.250 (361.9) | 10 |
| 146076 | Plastic | White | 2.500 (63.5) | 6.250 (158.8) | 10 |
| 146077 | Plastic | White | 2.500 (63.5) | 10.250 (260.4) | 10 |
| 13621 | Plastic | Yellow | 4.250 (107.9) | 6.250 (158.8) | 10 |
| 146078 | Plastic | Yellow | 4.250 (107.9) | 10.250 (260.4) | 10 |
| 146079 | Plastic | Yellow | 4.250 (107.9) | 14.250 (361.9) | 10 |
| 146080 | Plastic | Yellow | 2.500 (63.5) | 6.250 (158.8) | 10 |
| 146081 | Plastic | Yellow | 2.500 (63.5) | 10.250 (260.4) | 10 |
| Aluminum Panels - rounded corners and and hole punched | | | | | |
| 13629 | Aluminum | White | 4.250 (107.9) | 6.250 (158.8) | 10 |
| 106461 | Aluminum | White | 4.250 (107.9) | 10.250 (260.4) | 10 |
| 146082 | Aluminum | White | 4.250 (107.9) | 14.250 (361.9) | 10 |
| 146083 | Aluminum | White | 2.500 (63.5) | 6.250 (158.8) | 10 |
| 146113 | Aluminum | White | 2.500 (63.5) | 10.250 (260.4) | 10 |
| 13630 | Aluminum | Yellow | 4.250 (107.9) | 6.250 (158.8) | 10 |
| 146114 | Aluminum | Yellow | 4.250 (107.9) | 10.250 (260.4) | 10 |
| 146115 | Aluminum | Yellow | 4.250 (107.9) | 14.250 (361.9) | 10 |
| 146116 | Aluminum | Yellow | 2.500 (63.5) | 6.250 (158.8) | 10 |
| 146117 | Aluminum | Yellow | 2.500 (63.5) | 10.250 (260.4) | 10 |

| Catalog # | Material | Size | Qty |
|---|---|------------------------------|--------|
| Laminator & Panel Mounting Accessories | | | |
| 105038 | BLS1255 Laminator | | |
| 78272 | Double Sided Foam mounting tape (adhesive on both sides) | 0.500 (12.7) 108 ft. (32.9m) | 1 roll |
| 78273 | Double Sided Foam mounting tape (adhesive on both sides) | 0.750 (19.1) 108 ft. (32.9m) | 1 roll |
| 97200 | Double Sided Foam mounting tape strips (adhesive on both sides) | 0.750 (19.1) 4.500 (114.3) | 4 pcs |
| 58301 | Magnetic Strips (adhesive on one side, magnetic on other side) | 1.000 (25.4) 4.000 (101.6) | 10 pcs |



BLS1255 Laminator



Double Sided Foam Tape Roll



Double Sided Foam Tape Strip



Magnet Strips



Creating a Rigid Sign or Label



1. Choose your rigid panel, select the needed material size and print your adhesive label



2. Peel away the first 1½" of liner from the label. Apply to rigid panel, aligning edge of label with edge of panel



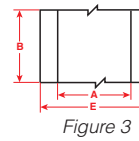
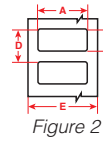
3. Insert panel and rotate handle until first 1" of panel is "pinched." Then grasp liner and pull it away as you rotate the handle to move the panel through laminator



4. In less than 30 seconds you have a rigid sign ready to hang

Product ID Materials

- A variety of polyester and specialty materials in wide format rolls designed for shape cutting multiple labels out of a single continuous roll
- Ideal for smaller volume custom shape cutting of Product ID and general industrial labels
- Proven materials with agency approvals for Product ID and asset tracking applications



| | | | |
|--|--------------------|------------------------------|------------|
| B-424: Paper | Matte Bright White | Service temp: -40°F to 124°F | RoHS |
| B-423: Polyester w/standard adhesive | Gloss White | Service temp: -94°F to 248°F | UL RoHS CE |
| B-432: Polyester w/ stronger adhesive | Clear | Service temp: -40°F to 212°F | UL RoHS CE |
| B-483: Polyester w/ ultra-aggressive adhesive for rough surfaces | Gloss White | Service temp: -94°F to 248°F | UL RoHS CE |
| B-484: Polyester w/ ultra-aggressive adhesive and pliability for angular surfaces | Gloss White | Service temp: -40°F to 240°F | UL RoHS |
| B-489: Polyester w/ ultra-aggressive adhesive for rough surfaces | Matte White | Service temp: -94°F to 248°F | UL RoHS CE |
| B-488: Polyester w/ standard adhesive and chemical resistance | Matte White | Service temp: -40°F to 320°F | RoHS CE |
| B-428: Metallized Polyester w/standard adhesive for smooth surfaces | Matte Silver | Service temp: -40°F to 293°F | UL RoHS CE |
| B-434: Metallized Polyester w/stronger adhesive for textured surfaces | Gloss Silver | Service temp: -40°F to 194°F | UL RoHS CE |
| B-486: Metallized Polyester w/ultra-aggressive adhesive for rougher surfaces | Matte Silver | Service temp: -40°F to 248°F | UL RoHS CE |
| B-565: Metallized polyester w/ standard adhesive | Matte Silver | Service temp: -40°F to 240°F | UL RoHS CE |
| B-595: Indoor/Outdoor vinyl | Semi-Gloss White | Service temp: -40°F to 180°F | RoHS |
| B-724: Polyimide label for extremely high temperatures | Matte Amber | Service temp: -94°F to 518°F | RoHS |
| B-727: Polyimide label for standard temperatures | Gloss White | Service temp: -94°F to 212°F | UL RoHS |
| B-437: Tedlar® for high temp labeling & cable wraps | | Service temp: -94°F to 275°F | RoHS |
| B-787: Polyvinyl flouride tape | Gloss White | Service temp: -94°F to 212°F | RoHS |

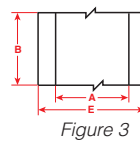
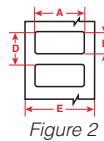
| Fits Printer Model(s) | Catalog # | Color | Size Inch (mm) | Length Feet (m) | |
|-----------------------|---------------|--------|----------------|------------------|---|
| BBP37,35 | B30C-4000-424 | White | 4.000 (101.6) | 100 ft. (30.4 m) | ✂ |
| BBP37,35 | B30C-4000-423 | White | 4.000 (101.6) | 100 ft. (30.4 m) | ✂ |
| BBP37,35 | B30C-4000-432 | Clear | 4.000 (101.6) | 100 ft. (30.4 m) | ✂ |
| BBP37,35 | B30C-4000-483 | White | 4.000 (101.6) | 100 ft. (30.4 m) | ✂ |
| BBP37,35 | B30C-4000-484 | White | 4.000 (101.6) | 100 ft. (30.4 m) | ✂ |
| BBP37,35 | B30C-4000-489 | White | 4.000 (101.6) | 100 ft. (30.4 m) | ✂ |
| BBP37,35 | B30C-4000-488 | White | 4.000 (101.6) | 100 ft. (30.4 m) | ✂ |
| BBP37,35 | B30C-4000-428 | Silver | 4.000 (101.6) | 100 ft. (30.4 m) | ✂ |

| Fits Printer Model(s) | Catalog # | Color | Size Inch (mm) | Length Feet (m) | |
|-----------------------|---------------|--------|----------------|------------------|---|
| BBP37,35 | B30C-4000-434 | Silver | 4.000 (101.6) | 100 ft. (30.4 m) | ✂ |
| BBP37,35 | B30C-4000-486 | Silver | 4.000 (101.6) | 100 ft. (30.4 m) | ✂ |
| BBP37,35 | B30C-4000-437 | White | 4.000 (101.6) | 100 ft. (30.4 m) | ✂ |
| BBP37,35 | B30C-4000-565 | Silver | 4.000 (101.6) | 100 ft. (30.4 m) | ✂ |
| BBP37,35 | B30C-4000-595 | White | 4.000 (101.6) | 100 ft. (30.4 m) | ✂ |
| BBP37,35 | B30C-4000-724 | Amber | 4.000 (101.6) | 100 ft. (30.4 m) | ✂ |
| BBP37,35 | B30C-4000-727 | White | 4.000 (101.6) | 100 ft. (30.4 m) | ✂ |
| BBP37,35 | B30C-4000-787 | White | 4.000 (101.6) | 100 ft. (30.4 m) | ✂ |

For recommended print ribbon refer to compatibility chart on page 20.

Tamper-Evident Asset ID Labels (B-438)

- Leaves checkerboard footprint on surface and on label if removed to prevent re-use



| Fits Printer Model(s) | Diagram | Catalog # | B# | Color | Label Width A Inch (mm) | Label Height B Inch (mm) | Vert. Repeat D Inch (mm) | Web Width E Inch (mm) | Labels Per Row | Labels Per Roll | Rec. Ribbon |
|-----------------------|---------|------------------|-------|--------------|-------------------------|--------------------------|--------------------------|-----------------------|----------------|-----------------|-------------|
| BBP37,35, 31, 33 | Fig. 2 | B30-17-438 | B-438 | Matte Silver | 2.000 (50.8) | 1.000 (25.4) | 2.500 (63.5) | 1.125 (28.6) | 1 | 1225 | B30-R4300 |
| BBP37,35, 31, 33 | Fig. 2 | B30-18-438 | B-438 | Matte Silver | 3.000 (76.2) | 1.000 (25.4) | 3.250 (82.6) | 1.250 (31.8) | 1 | 1225 | B30-R4300 |
| BBP37,35, 31, 33 | Fig. 2 | B30-222-438 | B-438 | Matte Silver | 3.000 (76.2) | 2.000 (50.8) | 3.250 (82.6) | 2.250 (57.2) | 1 | 650 | B30-R4300 |
| BBP37,35, 31, 33 | Fig. 3 | B30C-3000-438-SL | B-438 | Matte Silver | 3.000 (76.2) | 100 ft. (30.5m) | | 3.250 (82.6) | | 1 roll (cont.) | B30-R4300 |

Raised Profile Labels - Engraved Plate Substitutes - Rectangular Style (B-593)

Costs up to 80% less than engraved legend plates

- High gloss, polyester label with thick raised profile and ultra-aggressive adhesive (0.70mm thick)
- Ideal for inside-panel backer board labels and front-of-enclosure labeling
- Up to 80% less than engraved plates and print out in about 4 seconds
- 10-year outdoor durability rating
- 6 colors, 7 rectangular sizes

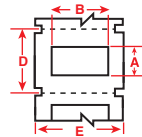
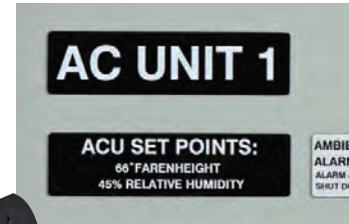
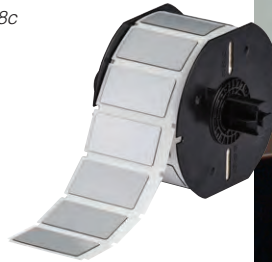


Figure 18c



Service Temp: -4°F to 212°F Application Temp: 50°F to 212°F
 Average Outdoor Durability: Up to 10 years
 Agency Approvals:

| Fits Printer Model(s) | Diagram | Catalog # | B# | Color | Label Height A Inch (mm) | Label Width B Inch (mm) | Vert. Repeat D Inch (mm) | Web Width E Inch (mm) | Labels Per Row | Labels Per Roll | Rec. Ribbon |
|-----------------------|----------|------------------|-------|--------|--------------------------|-------------------------|--------------------------|-----------------------|----------------|-----------------|--------------|
| BBP37,35,31,33 | Fig. 18c | B30EP-171-593-WT | B-593 | White | 0.490 (12.5) | 1.060 (26.9) | 0.750 (19.1) | 1.375 (34.9) | 1 | 500 | B30-R6000 |
| BBP37,35,31,33 | Fig. 18c | B30EP-172-593-WT | B-593 | White | 0.590 (15.0) | 1.770 (45.0) | 0.850 (21.6) | 2.500 (63.5) | 1 | 450 | B30-R6000 |
| BBP37,35,31,33 | Fig. 18c | B30EP-175-593-WT | B-593 | White | 0.750 (19.1) | 3.000 (76.2) | 1.000 (25.4) | 3.250 (82.6) | 1 | 375 | B30-R6000 |
| BBP37,35,31,33 | Fig. 18c | B30EP-173-593-WT | B-593 | White | 1.000 (25.4) | 2.000 (50.8) | 1.250 (31.8) | 2.500 (63.5) | 1 | 300 | B30-R6000 |
| BBP37,35,31,33 | Fig. 18c | B30EP-174-593-WT | B-593 | White | 1.000 (25.4) | 4.000 (101.6) | 1.250 (31.8) | 4.250 (108.0) | 1 | 300 | B30-R6000 |
| BBP37,35,31,33 | Fig. 18c | B30EP-176-593-WT | B-593 | White | 1.000 (25.4) | 3.000 (76.2) | 1.250 (31.8) | 3.250 (82.6) | 1 | 300 | B30-R6000 |
| BBP37,35,31,33 | Fig. 18c | B30EP-177-593-WT | B-593 | White | 2.500 (63.5) | 3.000 (76.2) | 2.750 (69.9) | 3.250 (82.6) | 1 | 125 | B30-R6000 |
| BBP37,35,31,33 | Fig. 18c | B30EP-171-593-YL | B-593 | Yellow | 0.490 (12.5) | 1.060 (26.9) | 0.750 (19.1) | 1.375 (34.9) | 1 | 500 | B30-R6000 |
| BBP37,35,31,33 | Fig. 18c | B30EP-172-593-YL | B-593 | Yellow | 0.590 (15.0) | 1.770 (45.0) | 0.850 (21.6) | 2.500 (63.5) | 1 | 450 | B30-R6000 |
| BBP37,35,31,33 | Fig. 18c | B30EP-175-593-YL | B-593 | Yellow | 0.750 (19.1) | 3.000 (76.2) | 1.000 (25.4) | 3.250 (82.6) | 1 | 375 | B30-R6000 |
| BBP37,35,31,33 | Fig. 18c | B30EP-173-593-YL | B-593 | Yellow | 1.000 (25.4) | 2.000 (50.8) | 1.250 (31.8) | 2.500 (63.5) | 1 | 300 | B30-R6000 |
| BBP37,35,31,33 | Fig. 18c | B30EP-174-593-YL | B-593 | Yellow | 1.000 (25.4) | 4.000 (101.6) | 1.250 (31.8) | 4.250 (108.0) | 1 | 300 | B30-R6000 |
| BBP37,35,31,33 | Fig. 18c | B30EP-176-593-YL | B-593 | Yellow | 1.000 (25.4) | 3.000 (76.2) | 1.250 (31.8) | 3.250 (82.6) | 1 | 300 | B30-R6000 |
| BBP37,35,31,33 | Fig. 18c | B30EP-177-593-YL | B-593 | Yellow | 2.500 (63.5) | 3.000 (76.2) | 2.750 (69.9) | 3.250 (82.6) | 1 | 125 | B30-R6000 |
| BBP37,35,31,33 | Fig. 18c | B30EP-171-593-BK | B-593 | Black | 0.490 (12.5) | 1.060 (26.9) | 0.750 (19.1) | 1.375 (34.9) | 1 | 500 | B30-R4400-WT |
| BBP37,35,31,33 | Fig. 18c | B30EP-172-593-BK | B-593 | Black | 0.590 (15.0) | 1.770 (45.0) | 0.850 (21.6) | 2.500 (63.5) | 1 | 450 | B30-R4400-WT |
| BBP37,35,31,33 | Fig. 18c | B30EP-175-593-BK | B-593 | Black | 0.750 (19.1) | 3.000 (76.2) | 1.000 (25.4) | 3.250 (82.6) | 1 | 375 | B30-R4400-WT |
| BBP37,35,31,33 | Fig. 18c | B30EP-173-593-BK | B-593 | Black | 1.000 (25.4) | 2.000 (50.8) | 1.250 (31.8) | 2.500 (63.5) | 1 | 300 | B30-R4400-WT |
| BBP37,35,31,33 | Fig. 18c | B30EP-174-593-BK | B-593 | Black | 1.000 (25.4) | 4.000 (101.6) | 1.250 (31.8) | 4.250 (108.0) | 1 | 300 | B30-R4400-WT |
| BBP37,35,31,33 | Fig. 18c | B30EP-176-593-BK | B-593 | Black | 1.000 (25.4) | 3.000 (76.2) | 1.250 (31.8) | 3.250 (82.6) | 1 | 300 | B30-R4400-WT |
| BBP37,35,31,33 | Fig. 18c | B30EP-177-593-BK | B-593 | Black | 2.500 (63.5) | 3.000 (76.2) | 2.750 (69.9) | 3.250 (82.6) | 1 | 125 | B30-R4400-WT |
| BBP37,35,31,33 | Fig. 18c | B30EP-171-593-GN | B-593 | Green | 0.490 (12.5) | 1.060 (26.9) | 0.750 (19.1) | 1.375 (34.9) | 1 | 500 | B30-R4400-WT |
| BBP37,35,31,33 | Fig. 18c | B30EP-172-593-GN | B-593 | Green | 0.590 (15.0) | 1.770 (45.0) | 0.850 (21.6) | 2.500 (63.5) | 1 | 450 | B30-R4400-WT |
| BBP37,35,31,33 | Fig. 18c | B30EP-175-593-GN | B-593 | Green | 0.750 (19.1) | 3.000 (76.2) | 1.000 (25.4) | 3.250 (82.6) | 1 | 375 | B30-R4400-WT |
| BBP37,35,31,33 | Fig. 18c | B30EP-173-593-GN | B-593 | Green | 1.000 (25.4) | 2.000 (50.8) | 1.250 (31.8) | 2.500 (63.5) | 1 | 300 | B30-R4400-WT |
| BBP37,35,31,33 | Fig. 18c | B30EP-174-593-GN | B-593 | Green | 1.000 (25.4) | 4.000 (101.6) | 1.250 (31.8) | 4.250 (108.0) | 1 | 300 | B30-R4400-WT |
| BBP37,35,31,33 | Fig. 18c | B30EP-176-593-GN | B-593 | Green | 1.000 (25.4) | 3.000 (76.2) | 1.250 (31.8) | 3.250 (82.6) | 1 | 300 | B30-R4400-WT |
| BBP37,35,31,33 | Fig. 18c | B30EP-177-593-GN | B-593 | Green | 2.500 (63.5) | 3.000 (76.2) | 2.750 (69.9) | 3.250 (82.6) | 1 | 125 | B30-R4400-WT |
| BBP37,35,31,33 | Fig. 18c | B30EP-171-593-RD | B-593 | Red | 0.490 (12.5) | 1.060 (26.9) | 0.750 (19.1) | 1.375 (34.9) | 1 | 500 | B30-R4400-WT |
| BBP37,35,31,33 | Fig. 18c | B30EP-172-593-RD | B-593 | Red | 0.590 (15.0) | 1.770 (45.0) | 0.850 (21.6) | 2.500 (63.5) | 1 | 450 | B30-R4400-WT |
| BBP37,35,31,33 | Fig. 18c | B30EP-173-593-RD | B-593 | Red | 1.000 (25.4) | 2.000 (50.8) | 1.250 (31.8) | 2.500 (63.5) | 1 | 300 | B30-R4400-WT |
| BBP37,35,31,33 | Fig. 18c | B30EP-174-593-RD | B-593 | Red | 1.000 (25.4) | 4.000 (101.6) | 1.250 (31.8) | 4.250 (108.0) | 1 | 300 | B30-R4400-WT |
| BBP37,35,31,33 | Fig. 18c | B30EP-171-593-SL | B-593 | Silver | 0.490 (12.5) | 1.060 (26.9) | 0.750 (19.1) | 1.375 (34.9) | 1 | 500 | B30-R6000 |
| BBP37,35,31,33 | Fig. 18c | B30EP-172-593-SL | B-593 | Silver | 0.590 (15.0) | 1.770 (45.0) | 0.850 (21.6) | 2.500 (63.5) | 1 | 450 | B30-R6000 |
| BBP37,35,31,33 | Fig. 18c | B30EP-173-593-SL | B-593 | Silver | 1.000 (25.4) | 2.000 (50.8) | 1.250 (31.8) | 2.500 (63.5) | 1 | 300 | B30-R6000 |
| BBP37,35,31,33 | Fig. 18c | B30EP-174-593-SL | B-593 | Silver | 1.000 (25.4) | 4.000 (101.6) | 1.250 (31.8) | 4.250 (108.0) | 1 | 300 | B30-R6000 |

U.S. Patent Nos. US8475914B2; US9005729B2.

Raised Profile Labels - Engraved Plate Substitutes - Push Button Style (B-593)

Costs up to 80% less than engraved legend plates

- High gloss, polyester label with thick raised profile and ultra-aggressive adhesive (0.70mm thick)
- High performance, low cost substitute to engraved plates
- 10-year outdoor durability rating
- On-demand labeling: labels print out in less than 4 seconds
- 5 push button sizes (including keyed and non-keyed 22.5mm, and 30.5mm hole diameter keyed)

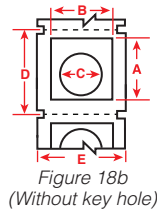


Figure 18b
(Without key hole)

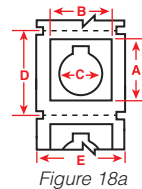
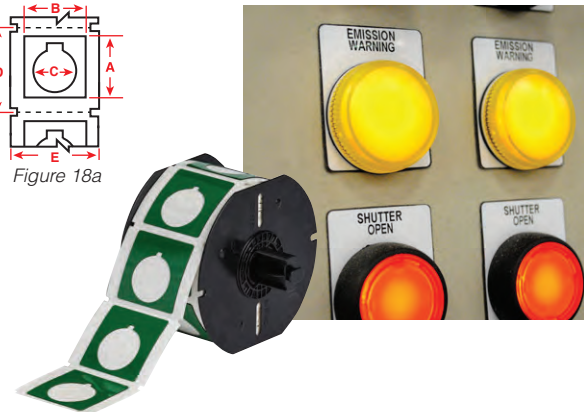


Figure 18a



Service Temp: -4°F to 212°F Application Temp: 50°F to 212°F
Average Outdoor Durability: Up to 10 years
Agency Approvals:

| Fits Printer Model(s) | Diagram | Catalog # | B# | Color | Label Height A Inch (mm) | Label Width B Inch (mm) | Hole Diameter C Inch (mm) | Vert. Repeat D Inch (mm) | Web Width E Inch (mm) | Labels Per Row | Labels Per Roll | Rec. Ribbon |
|-----------------------|----------|-------------------|-------|--------|--------------------------|-------------------------|---------------------------|--------------------------|-----------------------|----------------|-----------------|--------------|
| BBP37,35, 31, 33 | Fig. 18a | B30EP-167-593-WT | B-593 | White | 1.500 (38.1) | 1.200 (30.5) | 0.885 (22.5) | 1.750 (44.5) | 2.500 (63.5) | 1 | 200 | B30-R6000 |
| BBP37,35, 31, 33 | Fig. 18b | B30EP-167U-593-WT | B-593 | White | 1.500 (38.1) | 1.200 (30.5) | 0.885 (22.5) | 1.750 (44.5) | 2.500 (63.5) | 1 | 200 | B30-R6000 |
| BBP37,35, 31, 33 | Fig. 18a | B30EP-169-593-WT | B-593 | White | 1.800 (45.7) | 1.800 (45.7) | 1.200 (30.5) | 2.000 (50.8) | 2.500 (63.5) | 1 | 190 | B30-R6000 |
| BBP37,35, 31, 33 | Fig. 18a | B30EP-168-593-WT | B-593 | White | 1.900 (48.3) | 1.200 (30.5) | 0.885 (22.5) | 2.125 (54.0) | 2.500 (63.5) | 1 | 180 | B30-R6000 |
| BBP37,35, 31, 33 | Fig. 18a | B30EP-170-593-WT | B-593 | White | 2.400 (60.9) | 2.400 (60.9) | 1.200 (30.5) | 2.625 (66.7) | 3.250 (82.6) | 1 | 145 | B30-R6000 |
| BBP37,35, 31, 33 | Fig. 18a | B30EP-167-593-YL | B-593 | Yellow | 1.500 (38.1) | 1.200 (30.5) | 0.885 (22.5) | 1.750 (44.5) | 2.500 (63.5) | 1 | 200 | B30-R6000 |
| BBP37,35, 31, 33 | Fig. 18b | B30EP-167U-593-YL | B-593 | Yellow | 1.500 (38.1) | 1.200 (30.5) | 0.885 (22.5) | 1.750 (44.5) | 2.500 (63.5) | 1 | 200 | B30-R6000 |
| BBP37,35, 31, 33 | Fig. 18a | B30EP-169-593-YL | B-593 | Yellow | 1.800 (45.7) | 1.800 (45.7) | 1.200 (30.5) | 2.000 (50.8) | 2.500 (63.5) | 1 | 190 | B30-R6000 |
| BBP37,35, 31, 33 | Fig. 18a | B30EP-168-593-YL | B-593 | Yellow | 1.900 (48.3) | 1.200 (30.5) | 0.885 (22.5) | 2.125 (54.0) | 2.500 (63.5) | 1 | 180 | B30-R6000 |
| BBP37,35, 31, 33 | Fig. 18a | B30EP-170-593-YL | B-593 | Yellow | 2.400 (60.9) | 2.400 (60.9) | 1.200 (30.5) | 2.625 (66.7) | 3.250 (82.6) | 1 | 145 | B30-R6000 |
| BBP37,35, 31, 33 | Fig. 18a | B30EP-167-593-BK | B-593 | Black | 1.500 (38.1) | 1.200 (30.5) | 0.885 (22.5) | 1.750 (44.5) | 2.500 (63.5) | 1 | 200 | B30-R4400-WT |
| BBP37,35, 31, 33 | Fig. 18b | B30EP-167U-593-BK | B-593 | Black | 1.500 (38.1) | 1.200 (30.5) | 0.885 (22.5) | 1.750 (44.5) | 2.500 (63.5) | 1 | 200 | B30-R4400-WT |
| BBP37,35, 31, 33 | Fig. 18a | B30EP-169-593-BK | B-593 | Black | 1.800 (45.7) | 1.800 (45.7) | 1.200 (30.5) | 2.000 (50.8) | 2.500 (63.5) | 1 | 190 | B30-R4400-WT |
| BBP37,35, 31, 33 | Fig. 18a | B30EP-168-593-BK | B-593 | Black | 1.900 (48.3) | 1.200 (30.5) | 0.885 (22.5) | 2.125 (54.0) | 2.500 (63.5) | 1 | 180 | B30-R4400-WT |
| BBP37,35, 31, 33 | Fig. 18a | B30EP-170-593-BK | B-593 | Black | 2.400 (60.9) | 2.400 (60.9) | 1.200 (30.5) | 2.625 (66.7) | 3.250 (82.6) | 1 | 145 | B30-R4400-WT |
| BBP37,35, 31, 33 | Fig. 18a | B30EP-167-593-GN | B-593 | Green | 1.500 (38.1) | 1.200 (30.5) | 0.885 (22.5) | 1.750 (44.5) | 2.500 (63.5) | 1 | 200 | B30-R4400-WT |
| BBP37,35, 31, 33 | Fig. 18b | B30EP-167U-593-GN | B-593 | Green | 1.500 (38.1) | 1.200 (30.5) | 0.885 (22.5) | 1.750 (44.5) | 2.500 (63.5) | 1 | 200 | B30-R4400-WT |
| BBP37,35, 31, 33 | Fig. 18a | B30EP-169-593-GN | B-593 | Green | 1.800 (45.7) | 1.800 (45.7) | 1.200 (30.5) | 2.000 (50.8) | 2.500 (63.5) | 1 | 190 | B30-R4400-WT |
| BBP37,35, 31, 33 | Fig. 18a | B30EP-168-593-GN | B-593 | Green | 1.900 (48.3) | 1.200 (30.5) | 0.885 (22.5) | 2.125 (54.0) | 2.500 (63.5) | 1 | 180 | B30-R4400-WT |
| BBP37,35, 31, 33 | Fig. 18a | B30EP-170-593-GN | B-593 | Green | 2.400 (60.9) | 2.400 (60.9) | 1.200 (30.5) | 2.625 (66.7) | 3.250 (82.6) | 1 | 145 | B30-R4400-WT |
| BBP37,35, 31, 33 | Fig. 18a | B30EP-167-593-RD | B-593 | Red | 1.500 (38.1) | 1.200 (30.5) | 0.885 (22.5) | 1.750 (44.5) | 2.500 (63.5) | 1 | 200 | B30-R4400-WT |
| BBP37,35, 31, 33 | Fig. 18b | B30EP-167U-593-RD | B-593 | Red | 1.500 (38.1) | 1.200 (30.5) | 0.885 (22.5) | 1.750 (44.5) | 2.500 (63.5) | 1 | 200 | B30-R4400-WT |
| BBP37,35, 31, 33 | Fig. 18a | B30EP-169-593-RD | B-593 | Red | 1.800 (45.7) | 1.800 (45.7) | 1.200 (30.5) | 2.000 (50.8) | 2.500 (63.5) | 1 | 190 | B30-R4400-WT |
| BBP37,35, 31, 33 | Fig. 18a | B30EP-168-593-RD | B-593 | Red | 1.900 (48.3) | 1.200 (30.5) | 0.885 (22.5) | 2.125 (54.0) | 2.500 (63.5) | 1 | 180 | B30-R4400-WT |
| BBP37,35, 31, 33 | Fig. 18a | B30EP-170-593-RD | B-593 | Red | 2.400 (60.9) | 2.400 (60.9) | 1.200 (30.5) | 2.625 (66.7) | 3.250 (82.6) | 1 | 145 | B30-R4400-WT |

U.S. Patent Nos. US8475914B2; US9005729B2.



Calculate Your Cost Savings

A 1" x 2" rectangular raised profile label costs approximately **\$0.60**, lasts up to 10 years outdoors and prints in seconds!
A 22.5mm push button label will cost you about **\$0.32!**

What are you paying for engraved plates?



Supply Starter Kits

- Get started right and save a little too with a Brady supply starter kit!
- Packages of most commonly used labels and ribbons for the most common labeling applications
- Just enough supplies to ensure you have what you need to get going on that project



Basic Supply Starter Kit - Small

- (1) 4" Yellow Vinyl (B30C-4000-595-YL)
- (1) 4" White Vinyl (B30C-4000-595-WT)
- (1) 2.25" Red Vinyl (B30C-2250-595-RD)
- (1) Black Print Ribbon (B30-R10000)
- (1) White Print Ribbon (B30-R10000-WT)

Printer sold separately

| Catalog # | Description |
|-----------|----------------------------------|
| 146069 | Basic Supply Starter Kit - Small |



Gauge Label Supply Kit - Small

- (2) 4" White Vinyl (B30C-4000-595-WT)
- (2) Green & Red Paneled Print Ribbon - 8" Panel length (B30-R10000-GR-8)

Printer sold separately. BBP35 or 37 models needed to use these supplies

| Catalog # | Description |
|-----------|--------------------------------|
| 146070 | Gauge Label Supply Kit - Small |



Arc Flash Supply Kit - Large

- (2) 4" x 6" B-595 ANSI Warning Header (B30-25-595-ANSIWA)
- (1) 2.25" x 3" B-595 ANSI Warning Header (B30-241-595-ANSIWA)
- (1) 1" x 4" B-593 White Raised Panel Label (B30EP-174-593-WT)
- (1) 2.25" B-595 Orange Vinyl (B30C-2250-595-OR)
- (3) Black Print Ribbon (B30-R10000)

Printer sold separately

| Catalog # | Description |
|-----------|--------------------------------------|
| 142061 | Arc Flash Warning Supply Kit - Large |
| 146071 | Arc Flash Warning Supply Kit - Small |

Arc Flash Supply Kit - Small

- (2) 4 x 6 ANSI Warning Header Roll (B30-25-595-ANSIWA)
- (1) Black Print Ribbon (B30-R10000)

Printer sold separately



GHS Supply Kit - Large

- (1) 4 x 6" GHS label w/L4B four-diamond layout (B30-262-7569-CLP4B)
- (2) 3 x 4" GHS label w/L4B four-diamond layout (B30-261-7569-CLP4B)
- (1) 2 x 3" GHS label w/L4B four-diamond layout (B30-260-7569-CLP4B)
- (3) Black Print Ribbon (B30-R10000)

Printer sold separately

| Catalog # | Description |
|-----------|------------------------|
| 146072 | GHS Supply Kit - Large |
| 146073 | GHS Supply Kit - Small |

GHS Supply Kit - Small

- (2) 4 x 6" GHS label w/L4B four-diamond layout (B30-262-7569-CLP4B)
- (1) Black Print Ribbon (B30-R10000)

Printer sold separately



Safety & Compliance Supply Kit - Large

- (1) 4" x 6" B-595 ANSI Danger Header (B30C-25-595-ANSIDA)
- (1) 4" x 6" B-595 ANSI Warning Header (B30C-25-595-ANSIWA)
- (1) 4" x 6" B-595 ANSI Caution Header (B30C-25-595-ANSICA)
- (1) 4" x 6" B-595 ANSI Notice Header (B30C-25-595-ANSINO)
- (1) 4" B-526 Photoluminescent (B30C-4000-526)
- (1) 4" x 6" B-595 RTK NFPA (B30-263-595-NFPA)
- (2) Black Print Ribbon (B30-R10000)
- (1) Red Print Ribbon (B30-R10000-RD)

Printer sold separately

| Catalog # | Description |
|-----------|--|
| 142062 | Safety & Compliance Supply Kit - Large |



5S Visual Workplace Supply Kit - Large

- (1) 4" B-595 White Vinyl (B30C-4000-595-WT)
- (1) 2.25" B-595 White Vinyl (B30C-2250-595-WT)
- (1) 4" B-595 Yellow Vinyl (B30C-4000-595-YL)
- (1) 2.25" B-595 Yellow Vinyl (B30C-2250-595-YL)
- (1) 2.25" B-581 Repositionable Vinyl (B30C-2250-581-WT)
- (1) 1.125" B-581 Repositionable Vinyl (B30C-1125-581-WT)
- (1) 2.25" Magnetic Vinyl (B30C-2250-509-WT)
- (1) Blank Valve Tag Variety Pack (142133)
- (1) Die Cut Labels for Valve Tags (B30-219-595-BLNKWT)
- (1) 4" x 6" B-595 Caution Header (B30-25-595-ANSIWA)
- (2) Black Print Ribbon (B30-R10000)
- (1) Red Print Ribbon (B30-R10000-RD)
- (1) Green Print Ribbon (B30-R10000-GN)
- (1) Blue Print Ribbon (B30-R10000-BL)

Printer sold separately

| Catalog # | Description |
|-----------|--|
| 142063 | 5S Visual Workplace Supply Kit - Large |



Pipe Identification Supply Kit - Large

- (1) 4" B-595 Yellow Vinyl (B30C-4000-595-YL)
- (1) 2.25" B-595 Yellow Vinyl (B30C-2250-595-YL)
- (1) 1.125" B-595 Yellow Vinyl (B30C-1125-595-YL)
- (1) 4" B-595 Green Vinyl (B30C-4000-595-GN)
- (1) 2.25" B-595 Green Vinyl (B30C-2250-595-GN)
- (1) 1.125" B-595 Green Vinyl (B30C-1125-595-GN)
- (1) 1.125" B-595 Blue Vinyl (B30C-1125-595-BL)
- (1) 2.25" B-595 Red Vinyl (B30C-2250-595-RD)
- (1) 1.125" B-595 Red Vinyl (B30C-1125-595-RD)
- (1) 1" x 4" B-593 Black Raised Panel (B30EP-174-593-BK)
- (1) Blank Valve Tag Variety Pack (142133)
- (1) Small Die Cut Labels for Valve Tags (B30-242-595-BLNKWT)
- (3) Black Print Ribbon (B30-R10000)
- (2) White Print Ribbon (B30-R10000-WT)

Printer sold separately

| Catalog # | Description |
|-----------|----------------------------|
| 142064 | Pipe ID Supply Kit - Large |



General Industrial & 5S Supply Kit - Large

- (1) 4" B-595 White (B30C-4000-595-WT)
- (1) 2.25" B-595 White (B30C-2250-595-WT)
- (1) 1.125" B-595 White Vinyl (B30C-1125-595-WT)
- (1) 4" B-595 Yellow Vinyl (B30C-4000-595-YL)
- (1) 2.25" B-595 Yellow Vinyl (B30C-2250-595-YL)
- (1) 1.125" B-595 Yellow Vinyl (B30C-1125-595-YL)
- (1) 2.5" x 3" B-593 Black Raised Panel (B30EP-177-593-BK)
- (1) 4" x 6" B-595 ANSI Danger Header (B30-25-595-ANSIDA)
- (1) 4" x 6" B-595 ANSI Caution Header (B30-25-595-ANSICA)
- (1) 2.25" Reflective Yellow (B30C-2250-584-YL)
- (1) 4.25" White Tag Stock (B30C-4250-551-WT)
- (2) Black Print Ribbon (B30-R10000)
- (1) White Print Ribbon (B30-R10000-WT)
- (1) Red Print Ribbon (B30-R10000-RD)

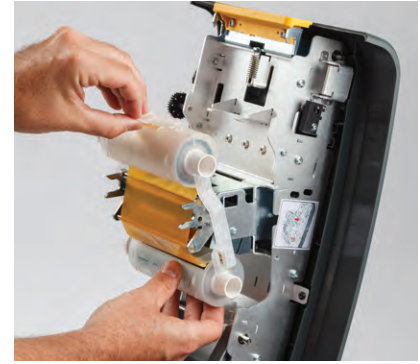
Printer sold separately

| Catalog # | Description |
|-----------|--|
| 142065 | General Industrial & 5S Supply Kit - Large |

Industrial Grade Print Ribbons

“Drop & Click” print ribbons for 5 second ribbon supply changes

- Tough, smear-proof ribbons that produce long-lasting printed text and can withstand years in industrial areas and outdoor conditions
- Self-contained cartridges drop straight into printer with a “click”
- No calibrating, no threading, no wasted feeding, no hassles and the ink will always be facing the right direction!
- Printer notifies user if installed ribbon is not recommended for installed labels



Ribbon installs in 5 seconds...snaps into place!

BBP®35 & BBP®37 Print Ribbon / Material Compatibility

| B-# | Material | B30-R4300 (Black) | B30-R6000 (Black) | B30-R6200 (Black) | B30-R10000 (Black) | B30-R10000-WT (White) | B30-R4400-WT (White) | B30-R10000-YL (Yellow) | B30-R10000-YL2 (Yellow) | B30-R10000 (Colors) |
|--------|--|----------------------|----------------------|----------------------|-----------------------|--------------------------|-------------------------|---------------------------|----------------------------|------------------------|
| B-423 | Glossy White Polyester | - | ● | ● | - | - | - | - | - | - |
| B-424 | Matte White Paper | ● | - | - | - | - | - | - | - | - |
| B-428 | Metallized Polyester | ● | - | - | - | - | - | - | - | - |
| B-432 | Glossy Clear Polyester | - | ● | - | - | - | ● | - | - | - |
| B-434 | Glossy Metallized Polyester | - | ● | - | - | - | - | - | - | - |
| B-437 | Tedlar® | ● | - | - | - | - | - | - | - | - |
| B-438 | Tamper Evident Metallized Polyester | ● | - | - | - | - | - | - | - | - |
| B-483 | Glossy White Polyester | - | ● | - | - | - | - | - | - | - |
| B-483 | ToughStripe® | - | ● | - | - | - | ● | - | - | - |
| B-484 | Glossy White Polyester | - | ● | - | - | - | - | - | - | - |
| B-486 | Matte Metallized Polyester | ● | - | - | - | - | - | - | - | - |
| B-488 | Matte White Polyester | ● | - | - | - | - | - | - | - | - |
| B-489 | Matte White Polyester | ● | - | - | - | - | - | - | - | - |
| B-509 | Printable Magnetic | - | - | - | ● | - | - | - | - | ●** |
| B-526 | Photoluminescent Polyester | - | - | - | ● | - | - | - | - | ●** |
| B-549 | Cold Temp Polyester | - | - | - | ● | ● | - | - | - | ●** |
| B-551 | Non-Adhesive Tag | - | - | - | ● | - | - | - | - | ●** |
| B-565 | Metallized Polyester | - | - | - | ● | - | - | - | - | - |
| B-569 | Low-Halide Polyester | - | - | - | ● | ● | - | - | - | ●** |
| B-581 | Repositionable Vinyl | - | - | - | ● | ● | - | - | - | ●** |
| B-584 | Retro Reflective | - | - | - | ● | - | - | - | - | ●** |
| B-593 | Raised Panel Engraved Plate Substitute | - | ● | - | - | - | ● | - | - | - |
| B-595 | Outdoor Vinyl | - | - | - | ● | ● | - | ●*** | ●*** | ●** |
| B-854 | Toughwash™ Metal Detectable | - | ● | - | - | - | - | - | - | - |
| B-855 | Toughwash™ | - | ● | - | - | - | - | - | - | - |
| B-724 | Matte Amber Polyimide | ● | - | - | - | - | - | - | - | - |
| B-727 | Glossy White Polyimide | - | ● | - | - | - | - | - | - | - |
| B-787 | Glossy White Polyvinyl Fluoride | - | ● | - | - | - | - | - | - | - |
| B-7569 | Vinyl Film | - | - | - | ● | - | - | - | - | - |

Refer to the corresponding Tech Data Sheets for complete material information at BradyID.com/techdata.

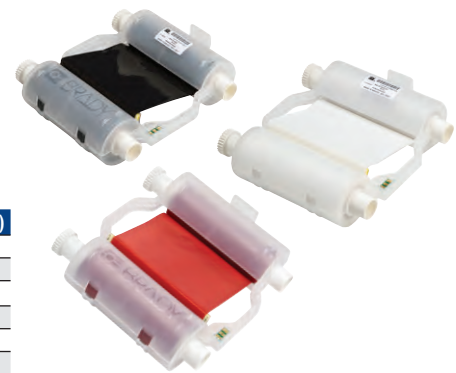
**Colored ribbons optimized for use on white material. Test use on other material colors for suitability to your application.

***For printing yellow onto white B-595 use B30-R10000-YL. For printing yellow onto other colors of B-595 use B30-R10000-YL2.

Single Color Print Ribbons

- Solid color ribbons for printing a single color onto a label
- Can be swapped out for printing multi-color labels on BBP35 or BBP37 printer if a paneled multi-color ribbon is not on-hand

| Fits Printer Model(s) | Catalog # | Color | Size Inch (mm) | Length Feet (m) |
|-----------------------|-------------------|-------------------|----------------|------------------|
| BBP37,35,31,33 | B30-R10000 | Black | 4.330 (109.9) | 200 ft. (60.9 m) |
| BBP37,35,31,33 | B30-R10000-WT | White | 4.330 (109.9) | 200 ft. (60.9 m) |
| BBP37,35,31,33 | B30-R4400-WT | White | 4.330 (109.9) | 200 ft. (60.9 m) |
| BBP37,35,31,33 | B30-R4300 | Black | 4.330 (109.9) | 200 ft. (60.9 m) |
| BBP37,35,31,33 | B30-R6000 | Black | 4.330 (109.9) | 200 ft. (60.9 m) |
| BBP37,35,31,33 | B30-R6200 | Black | 4.330 (109.9) | 200 ft. (60.9 m) |
| BBP37,35,31,33 | B30-R10000-RD | Red | 4.330 (109.9) | 200 ft. (60.9 m) |
| BBP37,35,31,33 | B30-R10000-GN | Green | 4.330 (109.9) | 200 ft. (60.9 m) |
| BBP37,35,31,33 | B30-R10000-BL | Blue | 4.330 (109.9) | 200 ft. (60.9 m) |
| BBP37,35,31,33 | B30-R10000-YL | Yellow* | 4.330 (109.9) | 200 ft. (60.9 m) |
| BBP37,35,31,33 | B30-R10000-YL2 | Yellow* | 4.330 (109.9) | 200 ft. (60.9 m) |
| BBP37,35,31,33 | B30-R10000-OR | Orange | 4.330 (109.9) | 200 ft. (60.9 m) |
| BBP37,35,31,33 | B30-R10000-MA | Magenta | 4.330 (109.9) | 200 ft. (60.9 m) |
| BBP37,35,31,33 | B30-R10000-PRCCY | Process Cyan** | 4.330 (109.9) | 200 ft. (60.9 m) |
| BBP37,35,31,33 | B30-R10000-PRCYEL | Process Yellow** | 4.330 (109.9) | 200 ft. (60.9 m) |
| BBP37,35,31,33 | B30-R10000-PRCMAG | Process Magenta** | 4.330 (109.9) | 200 ft. (60.9 m) |

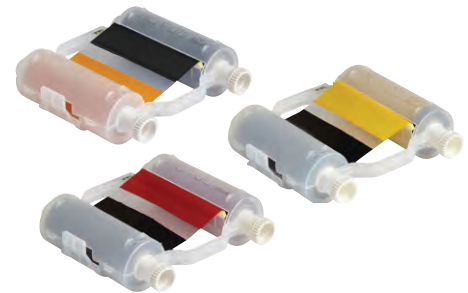


* For printing yellow onto white B-595 use B30-R10000-YL. For printing yellow onto other colors of B-595 use B30-R10000-YL2.

** Process ribbons print a much lighter shade - designed to be used together with other process ribbons and black ribbon to lay down a dot pattern for printing "blended" colors and process color objects.

Multi-Color "Paneled" Print Ribbons

- Ribbons have panels of 2- or 4-different colors for printing multiple colors onto a label
- Use CMYK ribbon for printing blended colors. Blended colors are not as saturated as solid or spot color paneled ribbons, but do offer a broader palette of available colors and shades
- Print multiple colors without having to swap in multiple ribbons



Two Color Print Ribbons

| Fits Printer Model(s) | Catalog # | Color | Size Inch (mm) | Length Feet (m) |
|---|------------------|------------------|---------------------------------------|------------------|
| 8" panel length - Typical yield: 100 panel sets per roll | | | | |
| BBP37,35 | B30-R10000-KR-8 | Black and Red | 4.330 (101.9) x 8.000 (203.2) Panels | 200 ft. (60.9 m) |
| BBP37,35 | B30-R10000-KY-8 | Black and Yellow | 4.330 (101.9) x 8.000 (203.2) Panels | 200 ft. (60.9 m) |
| BBP37,35 | B30-R10000-KB-8 | Black and Blue | 4.330 (101.9) x 8.000 (203.2) Panels | 200 ft. (60.9 m) |
| BBP37,35 | B30-R10000-KO-8 | Black and Orange | 4.330 (101.9) x 8.000 (203.2) Panels | 200 ft. (60.9 m) |
| BBP37,35 | B30-R10000-KG-8 | Black and Green | 4.330 (101.9) x 8.000 (203.2) Panels | 200 ft. (60.9 m) |
| BBP37,35 | B30-R10000-GR-8 | Green and Red | 4.330 (101.9) x 8.000 (203.2) Panels | 200 ft. (60.9 m) |
| 16" panel length - Typical yield: 60 panel sets per roll | | | | |
| BBP37,35 | B30-R10000-KR-16 | Black and Red | 4.330 (101.9) x 16.000 (406.4) Panels | 200 ft. (60.9 m) |
| BBP37,35 | B30-R10000-KY-16 | Black and Yellow | 4.330 (101.9) x 16.000 (406.4) Panels | 200 ft. (60.9 m) |
| BBP37,35 | B30-R10000-KB-16 | Black and Blue | 4.330 (101.9) x 16.000 (406.4) Panels | 200 ft. (60.9 m) |
| BBP37,35 | B30-R10000-KO-16 | Black and Orange | 4.330 (101.9) x 16.000 (406.4) Panels | 200 ft. (60.9 m) |
| BBP37,35 | B30-R10000-KG-16 | Black and Green | 4.330 (101.9) x 16.000 (406.4) Panels | 200 ft. (60.9 m) |
| BBP37,35 | B30-R10000-RB-16 | Red and Blue | 4.330 (101.9) x 16.000 (406.4) Panels | 200 ft. (60.9 m) |

Four Color Print Ribbons

| Fits Printer Model(s) | Catalog # | Color | Size Inch (mm) | Length Feet (m) |
|---|--------------------|---------------------------------|---------------------------------------|------------------|
| 8" panel length - Typical yield: 50 panel sets per roll | | | | |
| BBP37,35 | B30-R10000-KRGB-8 | Black, Red, Green and Blue | 4.330 (101.9) x 8.000 (203.2) Panels | 200 ft. (60.9 m) |
| BBP37,35 | B30-R10000-KRYG-8 | Black, Red, Yellow and Green | 4.330 (101.9) x 8.000 (203.2) Panels | 200 ft. (60.9 m) |
| BBP37,35 | B30-R10000-KRYB-8 | Black, Red, Yellow and Blue | 4.330 (101.9) x 8.000 (203.2) Panels | 200 ft. (60.9 m) |
| BBP37,35 | B30-R10000-KRBO-8 | Black, Red, Blue and Orange | 4.330 (101.9) x 8.000 (203.2) Panels | 200 ft. (60.9 m) |
| BBP37,35 | B30-R10000-CMYK-8 | Process Cyan, Mgnta, Yell, Blk | 4.330 (101.9) x 8.000 (203.2) Panels | 200 ft. (60.9 m) |
| 16" panel length - Typical yield: 30 panel sets per roll | | | | |
| BBP37,35 | B30-R10000-KRGB-16 | Black, Red, Green and Blue | 4.330 (101.9) x 16.000 (406.4) Panels | 200 ft. (60.9 m) |
| BBP37,35 | B30-R10000-KRYB-16 | Black, Red, Yellow and Blue | 4.330 (101.9) x 16.000 (406.4) Panels | 200 ft. (60.9 m) |
| BBP37,35 | B30-R10000-CMYK-16 | Black, Cyan, Magenta, Yellow ** | 4.330 (101.9) x 16.000 (406.4) Panels | 200 ft. (60.9 m) |

** Process ribbons print a much lighter shade - designed to be used together with other process ribbons and black ribbon to lay down a dot pattern for printing "blended" colors and process color objects.

Brady Workstation

Create labels on your PC and send to your printer.

Brady has revolutionized the way you create labels on your PC with the new Brady Workstation and its apps that are specific to the projects you want to execute. It's built to be super powerful and super simple – just pick the apps you need to get your job done.

How does it work? Download the free Brady Workstation program then fill it with the apps you need and leave out the ones you don't.

Apps made to work for you. These apps feature built in regulations and standards, pictograms, common phrases, data importing, guidance and help functions — all to help you create signs and labels to keep your facility compliant and safe. Most of the apps are free, while others vary in cost with the option of a 14-day free trial.



Available Brady Workstation Apps

There are several label creation apps within Brady Workstation to fit a wide variety of applications. Don't need all of the apps? No problem! Once Brady Workstation is downloaded to your PC, you can choose which apps you want and leave out the ones you don't.



Custom Designer App

Design anything you can imagine in this free app. Start with a blank canvas to create a label or sign that meets your unique needs. Add barcodes or QR codes, import data from Excel and more!



Pipe Marker & Arrow Tape Apps

Easily comply with the latest pipe marking standard, ANSI/ASME 13.1 2007 or choose a different standard if you wish. This free app allows you to create customized pipe markers, then save them to use again whenever you want more.



Express Signs App

Create your signs in no time with this free app. Simply pick a template, enter your info and you're ready to print! Don't like the layouts? Adjust them.



Lockout Writer App

Quickly create compliant lockout tagout labels. This app includes procedure printing templates, simple translations, easy-to-use image editing for callouts, and import capabilities from Lockout-Pro™ software.



GHS Labels App

Creating GHS labels is now amazingly simple. Enter your SDS data one time in simple drop down list and template text entry fashion, and you can create any size label and print it at any time.



Download Workstation Today!

Visit workstation.bradyyid.com to download the program and choose from several apps, including Express Signs app, Pipe Marker app, Custom Designer app, GHS app and Lockout Writer app.



1. Download Brady Workstation at workstation.bradyyid.com
2. Fill the workstation with the apps you want and leave out the ones you don't
3. Save time by quickly designing labels within the app and then printing them on your BBP®31, BBP®33, BBP®35, BBP®37, BBP®85 and GlobalMark®2 printers

Printer Specifications

Multi-color label printers with unprecedented capabilities, unrivaled ease of use and the best materials. There's never been a better tool to label your entire facility.

BBP[®]37
COLOR & CUT
SIGN & LABEL PRINTER

BBP[®]35
MULTICOLOR SIGN & LABEL PRINTER

| BBP [®] 35 Printer and BBP [®] 37 Printer | | | | | | | | | | | | | | | | | | | |
|---|--|--------------|----------------|-------------|---------------|------------------|---------------------|---------------------|-----------|----------------|-------------------|--------------|-------------|-------------------|--------------|--------------|---------|-----------|-------|
| Description | Facility, Safety and Lean 5S printer for walk up and print ease of use, fast supply changeovers, multicolor printing and ability to cut-out text and shapes (cut-outs enabled on BBP37 only). Best choice for "lean event" labeling situations and multiple user locations because it has a very approachable interface and very fast supply changeovers. | | | | | | | | | | | | | | | | | | |
| Applications | Facility & Safety ID, Signs, Pipe Markers, Lean/5S, Arc Flash Labels, GHS & Chemical Labels, Equipment Labels, Panel & Push Button Labels, Reflective & Glow in the Dark Labels, Tags, Magnetic, Cold-Temp Labeling . Cut-out Text with BBP37 only. | | | | | | | | | | | | | | | | | | |
| Label Material Types | Extremely aggressive 8-10 year outdoor vinyl with high tack and chemical resistance, plus Toughstripe [®] floor tape, wash-down material, 10-hr glow in the dark, reflective, magnetic, tags, engraved plate substitute and 20 other materials. | | | | | | | | | | | | | | | | | | |
| Includes | Printer, Power Cord, USB Cable, Cleaning Kit, Cutter Cleaning Tool, Quick Start Guide | | | | | | | | | | | | | | | | | | |
| Warranty | 5 year | | | | | | | | | | | | | | | | | | |
| Printer Features: | | | | | | | | | | | | | | | | | | | |
| Print Resolution | 300 dpi | | | | | | | | | | | | | | | | | | |
| Color Printing Capability | Multi Color | | | | | | | | | | | | | | | | | | |
| Maximum Print Speed | 5 in/sec | | | | | | | | | | | | | | | | | | |
| Cutter Type | Auto Cutter. BBP37 also has XY Cutter. | | | | | | | | | | | | | | | | | | |
| Media Sensor Adjustment | None | | | | | | | | | | | | | | | | | | |
| Display & User Interface: | | | | | | | | | | | | | | | | | | | |
| Display Type | Color Touch Screen | | | | | | | | | | | | | | | | | | |
| Display Size | 3.63 in x 6.0 in | | | | | | | | | | | | | | | | | | |
| Keyboard Type | Full Size QWERTY | | | | | | | | | | | | | | | | | | |
| Supply Remaining Gauge | Yes | | | | | | | | | | | | | | | | | | |
| Languages | English, Spanish, Portuguese, French | | | | | | | | | | | | | | | | | | |
| Units | Inches, millimeters, points | | | | | | | | | | | | | | | | | | |
| Stand-Alone Apps & Editing: | | | | | | | | | | | | | | | | | | | |
| Built-In Label Wizards | <table border="0"> <tr> <td>Custom Label</td> <td>Gradient Scale</td> </tr> <tr> <td>GHS / CLP</td> <td>Right-To-Know</td> </tr> <tr> <td>Safety Signs</td> <td>WHMIS</td> </tr> <tr> <td>Pipe Marker</td> <td>Tags</td> </tr> <tr> <td>Arc Flash</td> <td>General Templates</td> </tr> <tr> <td>Circle Gauge</td> <td>Quick Label</td> </tr> </table> | Custom Label | Gradient Scale | GHS / CLP | Right-To-Know | Safety Signs | WHMIS | Pipe Marker | Tags | Arc Flash | General Templates | Circle Gauge | Quick Label | | | | | | |
| Custom Label | Gradient Scale | | | | | | | | | | | | | | | | | | |
| GHS / CLP | Right-To-Know | | | | | | | | | | | | | | | | | | |
| Safety Signs | WHMIS | | | | | | | | | | | | | | | | | | |
| Pipe Marker | Tags | | | | | | | | | | | | | | | | | | |
| Arc Flash | General Templates | | | | | | | | | | | | | | | | | | |
| Circle Gauge | Quick Label | | | | | | | | | | | | | | | | | | |
| Fonts / Graphics / Symbologies: | | | | | | | | | | | | | | | | | | | |
| Font Sizes | 0.05 in - 3.5 in | | | | | | | | | | | | | | | | | | |
| Font Styles | Arial, Arial 65, Courier New, Tahoma, Times New Roman plus more with Brady Workstation. Can also import TrueType fonts to printer | | | | | | | | | | | | | | | | | | |
| Symbols Quantity | 664 | | | | | | | | | | | | | | | | | | |
| Symbols Categories | <table border="0"> <tr> <td>Arrows</td> <td>Miscellaneous</td> </tr> <tr> <td>Fire Safety</td> <td>Packaging</td> </tr> <tr> <td>First Aid/Rescue</td> <td>Personal Protective</td> </tr> <tr> <td>Hazardous Transport</td> <td>Equipment</td> </tr> <tr> <td>Hazmat GHS/CLP</td> <td>Prohibition</td> </tr> <tr> <td>Hazmat HSID</td> <td>Shapes</td> </tr> <tr> <td>Imported Graphics</td> <td>Sign Headers</td> </tr> <tr> <td>ISO Graphics</td> <td>Warning</td> </tr> <tr> <td>Mandatory</td> <td>WHMIS</td> </tr> </table> | Arrows | Miscellaneous | Fire Safety | Packaging | First Aid/Rescue | Personal Protective | Hazardous Transport | Equipment | Hazmat GHS/CLP | Prohibition | Hazmat HSID | Shapes | Imported Graphics | Sign Headers | ISO Graphics | Warning | Mandatory | WHMIS |
| Arrows | Miscellaneous | | | | | | | | | | | | | | | | | | |
| Fire Safety | Packaging | | | | | | | | | | | | | | | | | | |
| First Aid/Rescue | Personal Protective | | | | | | | | | | | | | | | | | | |
| Hazardous Transport | Equipment | | | | | | | | | | | | | | | | | | |
| Hazmat GHS/CLP | Prohibition | | | | | | | | | | | | | | | | | | |
| Hazmat HSID | Shapes | | | | | | | | | | | | | | | | | | |
| Imported Graphics | Sign Headers | | | | | | | | | | | | | | | | | | |
| ISO Graphics | Warning | | | | | | | | | | | | | | | | | | |
| Mandatory | WHMIS | | | | | | | | | | | | | | | | | | |
| Barcode Symbologies - Linear | Code 39 Code 128 Auto Interleaved 2 of 5 Additional through Brady Workstation | | | | | | | | | | | | | | | | | | |
| Barcode Symbologies - 2D | QR Code PDF417 Additional through Brady Workstation | | | | | | | | | | | | | | | | | | |
| Media / Supplies Information: | | | | | | | | | | | | | | | | | | | |
| Compatible Media | B30 Series (manufactured after September 1, 2015) | | | | | | | | | | | | | | | | | | |
| Compatible Ribbons | B30 Series (manufactured after September 1, 2015) | | | | | | | | | | | | | | | | | | |
| Die Cuts vs Continuous | Continuous Tapes, Pre-Printed Die Cut Labels, General Die Cut Labels | | | | | | | | | | | | | | | | | | |
| Ribbon & Label Installation | Media: Supplied in cartridge, drops into place, 15 sec changeover Ribbon: Supplied in cartridge, snaps into place, 5 sec changeover | | | | | | | | | | | | | | | | | | |
| Custom Media Parts Available | No | | | | | | | | | | | | | | | | | | |
| Media Widths | 0.5 to 4 in | | | | | | | | | | | | | | | | | | |

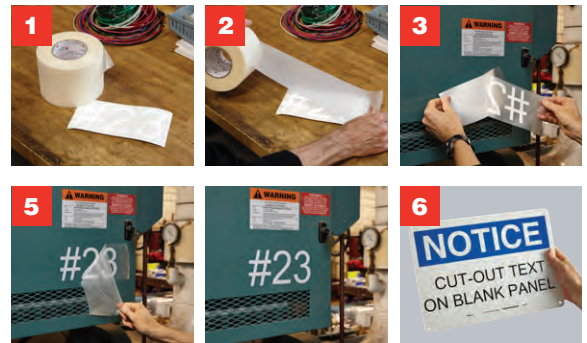
| Compatible Brady Material Numbers | B-423, B-424, B-428, B-432, B-434, B-437, B-438, B-483, B-484, B-486, B-488, B-489, B-489, B-509, B-526, B-549, B-551, B-565, B-569, B-581, B-584, B-593, B-595, B-724, B-727, B-787, B854, B-855, B-7569 |
|---|---|
| Software & Connectivity: | |
| Connectivity Options | Stand-alone use, Ethernet, USB |
| Software Compatibility | Brady Workstation |
| Physical / Operational Characteristics: | |
| Dimensions | 11 in H x 19 in W x 14.25 in D |
| Weight | 36 LB |
| Operating Temperature Range | 50° to 104° F |
| Storage Temperature Range | -4° to 122° F |
| Operating Humidity Range | 20%-80% RH Non- Condensing |
| Storage Humidity Range | 15% to 90% RH Non- Condensing |
| Power Supply Voltage | 110V - 240V |
| Auto Shutoff / Power Conserve | Yes |
| Agency Approvals / Regulatory Compliance: | |
| Enables Industry Compliance | USA & Canada - cULc Europe - CE (including Eu RoHS) Argentina - UL-AR and S Mark Mexico - UL NOM CoC Australia - RCM mark Russia - EAC Korea - KC China - CCC and RoHS India - BIS Taiwan - BSMI Exemption South Africa - LOA and SABS (No logo on product label) |
| U.S. Patents | Multiple U.S. Patents Apply Printers: 6364552 B1; 6788324; 6768502 B2 BBP [®] 37 Printer Only: 6664995 B2; Ribbon cartridges: 6860658 B2; D480749 |
| MSDS | n/a |



Transfer Tape is the Best Way to Apply Cut-Out Shapes & Text!

Transfer Tape Catalog #76737 (4.25" x 200 ft. roll)

1. Cut out your shape or text and weed away unneeded material
2. Apply transfer tape over your cut-out objects and press firmly
3. Peel back transfer tape which will lift and expose the adhesive side of your now pre-spaced objects
4. Position object in place and press firmly onto final surface
5. Peel back transfer tape at sharp angle to surface
6. Works great for cut-out text on rigid sign panels too



BBP[®]37

COLOR & CUT
SIGN & LABEL PRINTER

BBP[®]35

MULTICOLOR SIGN & LABEL PRINTER

When you need to create a safer, leaner and more productive workplace by communicating hazards, procedures and facility information at-a-glance – you need the power of a BBP[®]35 or BBP[®]37 sign and label printer. With multi-color printing, shape-cutting capabilities and fast printing, you can color your way to an improved workplace by creating effective visuals right when you need them.



Printers

| Catalog # | Description |
|-----------|--|
| BBP35 | BBP35 Multicolor Sign & Label Printer |
| BBP37 | BBP37 Color & Cut Sign & Label Printer |

Brady Workstation

Visit workstation.bradyid.com

| Catalog # | Description |
|---------------|---|
| Free Download | Brady Workstation Program |
| BWRK-GHS-DWN | GHS Labels app for Brady Workstation (download) |
| BWRK-LOW-DWN | Lockout Writer app for Brady Workstation (download) |
| Free Download | Custom Designer app for Brady Workstation |
| Free Download | Express Signs app for Brady Workstation |
| Free Download | Pipe Marker app for Brady Workstation |
| Free Download | Arrow Tape app for Brady Workstation |
| Free Download | Arc Flash app for Brady Workstation |

Check workstation.bradyid.com for up-to-date apps.

Printer Accessories

| Catalog # | Description |
|-------------|---|
| 120994 | Rolling case with handle, 2 pockets for supplies |
| B31-WIPER | 5 pack of extra media wipers |
| PCK-6 | Cleaning swabs that are pre-soaked in IPA (50 per pack) |
| 76737 | Transfer tape for cut-out objects (200 ft. roll) |
| BBP37-BLADE | Replacement XY cutting blade (1 each) |



Scan the QR code for more information

Learn more now at www.BradyID.com/bbp37.

Multiple U.S. Patents Apply
Printers: 6364552 B1; 6788324; 6768502 B2
BBP[®]37 Printer Only: 6664995 B2;
Ribbon cartridges: 6860658 B2; D480749



Brady360[®] 5-Year Warranty

We have you Covered.

We always stand behind our products to make sure they exceed your expectations and to deliver you an unrivaled customer experience. We've strengthened our commitment to you with a **5-year printer warranty standard and free of charge** on our benchtop printer models.*

With a team of 30 certified tech support and repair technicians and our 5-year warranty backing you up, you can rest assured you'll have the support you need — every step of the way.

Our 5-year warranty covers repair parts & labor, one print head replacement, a free loaner printer, a stress-free printer setup session and much more. You also have access to additional fee-based support, including an on-site repair service, custom programming and advanced integrations services.

*Excludes repairs due to negligence, Wraptor™ model and handheld models.
See www.BradyID.com/brady360 for full coverage details.

USA
Customer Service: 1-888-272-3946
Inside Sales: 1-888-311-0775
BradyID.com

Canada
Customer Service: 1-800-263-6179
BradyCanada.ca


Mexico
Customer Service: 1-800-262-7777
Inside Sales: 1-800-262-7777 ext 177
BradyLatinAmerica.com



**THE LABELING
POSSIBILITIES
ARE ENDLESS!**

MW-223900-F12 / FROM MAIN TO SUMP HOUSE

MILL WATER



**Take a peek inside to see
just what you can do with
the BBP[®]35 and BBP[®]37
sign and label printers.**



Color Your Way to an Improved Workplace

Brady's BBP®35 and BBP®37 sign and label printers have unprecedented capabilities that set the new standard in safety and facility identification. With multi-color printing and shape-cutting capabilities, along with incredibly fast and easy printing, you can make signs and labels in the colors and shapes you need to make an impact.

Get faster, easier and more versatile printing with these key features:

- **Multiple Print Colors** – To make more noticeable and effective signs and labels
- **Text and Shape Cutting** – A built-in XY plotter-cutter can cut out shapes and text
- **Walk-Up-and-Print Functionality** – Incredibly easy and intuitive functionality so anyone can print labels. Ideal for multiple users, and lean/5S events and areas
- **Automatic Label Setup** – Printers read information from the supply cartridge so you can start printing immediately, no need to manually setup or calibrate
- **Fast Print Speed** – Create labels faster with 5-inches-per-second print speed



The New Standard in Safety & Facility Identification

Because safety and productivity mean the world to you, you need signs and labels in your workplace that provide visual cues, warnings and organizational support at-a-glance. Whether you want durable maintenance and equipment identification, attention-grabbing safety signage, clear and consistent lean/5S manufacturing visuals, or effective operations labels – With over 300 reliable label parts, now you can do it all!



Emergency Egress Identification

With emergency egress identification that glows in the dark throughout your facility, employees and guests will be able to quickly exit the building even when faced with low light and smoky conditions.

BradyGlo™ High-Intensity Photoluminescent Tape (B-526) Glows in the dark for up to 10 hours for marking evacuation routes and exits, emergency utility shut-offs, fire extinguishers, alarm pulls and vital equipment controls.



One Point Labels

One-point labels help employees perform tasks safely and more efficiently by providing a quick, visual reminder at the point-of-need of an often over-looked step.

Indoor/Outdoor Vinyl (B-595) For facility and safety identification, featuring our most aggressive adhesive to conform to rough and highly textured surfaces, with 8-10 year outdoor durability.



Gradient “Ruler” Labels

The printer's Gradient Label App creates a strip of material showing exact inch or millimeter spacing using tick marks. Ideal for creating visual cues for accurate equipment settings and cutting parts to specific lengths.

Indoor/Outdoor Vinyl (B-595) Ideal material for industrial labeling of machinery, tanks, racks, tools and equipment — indoors or outdoors.



Lockout Tags & Labels

Visually tagging out equipment and identifying energy control points is a critical step in safeguarding workers around the equipment they operate, service and maintain.

Non-Adhesive Tags (B-551) Tags feature a pre-cut hole, perforation between tags, and optional snap-in plastic grommets for added strength.

Indoor/Outdoor Vinyl (B-595) Industrial strength adhesive ideal for energy source labels.



Washdown Resistant Labels

Washdown resistant labels withstand high pressures, heat, harsh chemicals and numerous washdown cycles, and some include a metal-detectable layer as well.

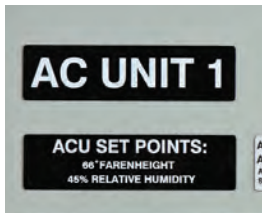
ToughWash® Washdown Resistant Labels (B-854, B-855) Choose B-855 for the standard material or B-854 for a metal detectable material to detect foreign debris in food stream.



Gauge Labels

Gauge labels can help you keep equipment safely working with less downtime by allowing workers to identify abnormalities in temperature and pressure levels at-a-glance.

Circle Gauge Labels (B-595) Use the printer's Circle Gauge App to specify diameter and range of values for small or large gauges, and center hole size for accurate label placement and visibility of printed info.



Raised Panel Labels

With cost-effective raised panel labels, you can clearly identify enclosures and panel controls to make tasks more efficient and errors occur less often.

Raised Profile Labels - Engraved Plate Substitutes - Rectangular Style (B-593) Cost up to 80% less than engraved legend plates, with 10-year outdoor durability.



Repositionable Organization Labels

Easily find what you're looking and keep your operations running efficiently by labeling shelves, carts, tables and more with repositionable or magnetic labels.

Repositionable Vinyl (B-581) Label removes cleanly without leaving residue for temporary, removable and repositionable labeling.

Printable Magnetic (B-509) Easiest and quickest material for removing and repositioning.



Reflective Tape

When it comes to outdoor labeling, for applications such as utility pedestals, hard hats, jobsite equipment and more, retro reflective tape is an ideal labeling solution.

Retro Reflective Tape (B-584) Highly reflective material shines back brightly when struck by light, ideal for outdoor and jobsite labeling.



Floor Marking

With printable floor marking tape, you can identify hazardous areas, traffic flow and designated storage locations throughout your facility.

ToughStripe® Printable Floor Marking Tape (B-483 with overlaminates) Features ultra-aggressive adhesive to withstand forklift and pallet jack traffic without tearing or lifting.



HazCom Labels

Create a compliant workplace with the HazCom/GHS labels you need – when and where you need them.

GHS / CLP Chemical Labels (B-7569)

Pre-printed red diamonds allow you to create 2-color GHS labels in one print pass, with the material durability to withstand moisture, chemicals and handling.



Safety Signs

Safety is an essential part of any facility, and supporting employee safety starts with having effective signage. You can create the safety signs you need in no time with blank labels or pre-printed header materials.

Pre-Printed Pre-Cut Blank Sign Headers (B-595)

Pre-printed headers allow you to create multi-color signs in just one print pass, with an indoor/outdoor material that conforms to rough, textured and other unique surfaces.



Pipe Markers

Save time tracing pipes with markers that identify the content of the pipes, direction of the flow, and source and destinations points of the pipes.

Indoor/Outdoor Vinyl (B-595) Adheres to bare, insulated or jacketed pipes. Highly pliable for rough and curved surfaces, with 8-10 year outdoor durability.



Arc Flash

Keep employees safe while they are working near energized equipment with labels that show system voltage, arc flash boundary and PPE information.

Arc Flash Labels (B-595) Easily create multi-color Arc Flash labels using pre-printed header supplies and the built in Arc Flash App on the BBP®37 printer or Brady Workstation.



Pre-Printed vs. Blank Labels

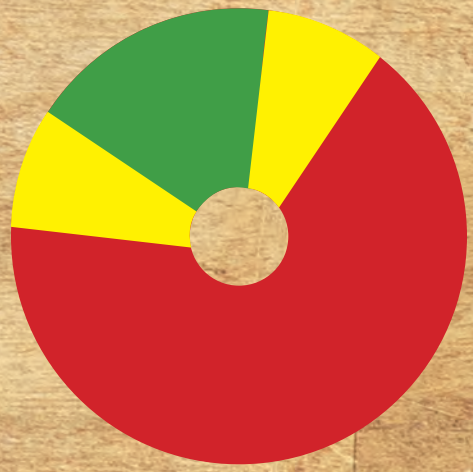
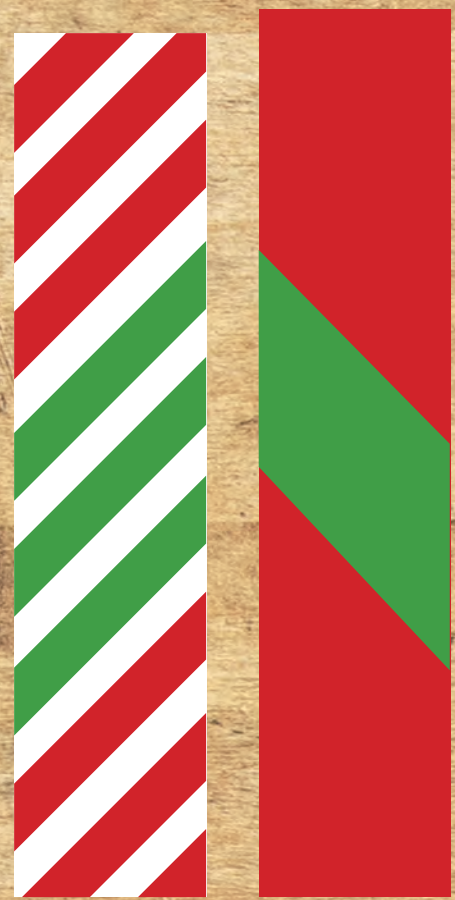
When it comes to making safety, arc flash and GHS labels, you have two options:

Pre-Print Label Supplies: Use label tape that already has the header or diamonds pre-printed, allowing for multi-color labels in a single print pass.

Blank Continuous Label Supply: Use white or colored tape and a multi-colored paneled ribbon and simply print all the elements on your label. This option helps to reduce supply inventory.

**OPEN
HERE!**

CUT OUT TEXT



LUBE POINT
NO. 8
1 PUMP
WEEKLY

REFLECTIVE

WARNING

MULTI-COLORED SIGNS!

TAGS

Multicolor tags for Safety, Maint, Lean 5S

2-250V AC, 50 Hz, 2.5A Max

WARNING! FIRE HAZARD! For continued operation, replace only with 3 Amp fuse (5x20mm)

FIBRE-TECH LLC - Phillips, WI - www.fot.com

MADE IN U.S.A.

DRILL/HOLE LOCATION

NORMAL SET POINT
185°F 200psi

DANGER

HOT SURFACE
DO NOT TOUCH!

P-106-A

MAKE-UP PUMP 106A

Disconnect Location: Panel 4501 on Level 2 Mezzanine
Lockout Procedure: LOP-P106A

CAUTION

ROTATE GUARD COLLAR DOWN
BEFORE THREADING NEW JOB

10 hr GLOW

n-Propyl Alcohol

Highly flammable liquid and vapour. Causes serious eye damage. May cause drowsiness or dizziness. Keep away from heat/sparks/open flames/hot surfaces. No smoking. Do not breathe dust/fume/gas/mist/vapour/spray. Wear protective gloves/protective clothing/eye protection/face protection. IF IN EYES: seek medical attention.

DANGER 500 ml

WARNING

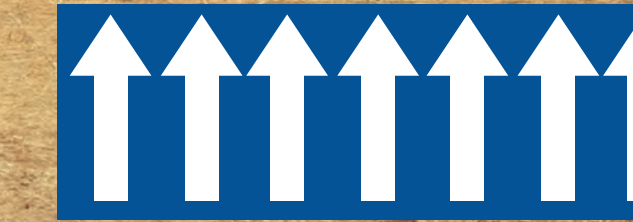
ARC FLASH AND SHOCK HAZARD
APPROPRIATE PPE REQUIRED

- 2'-0" - Flash Hazard Boundry
- 2.5 - cal/cm2 Flash Hazard at 18 inches
- #1 - PPE Level (FR shirt & FR pants, or FR coverall, eye protection, hard ht, VR rubber or leather gloves)

Shock hazard when cover is open/removed

Limited Approach
Restricted Approach
Prohibited Approach

PLATE NAME: PLATING LINE MCC FED FROM: PNL 213, BRKRS 10-18



MEDICAL GAS TO

54% CAUS

Hydrogen Sulfide

Extremely flammable gas. Contains gas under pressure; may explode if heated. Causes skin irritation. Fatal if inhaled. May cause respiratory irritation. Very toxic to aquatic life. Keep away from heat/sparks/open flames/hot surfaces. No smoking. Do not breathe gas/vapours. Avoid release to the environment. IF INHALED: Remove victim to fresh air and keep at rest in a position comfortable for breathing. IF IN EYES: Rinse cautiously with water for several minutes. Remove contact lenses. If eye irritation persists, seek medical attention. Leaking gas fire: Do not extinguish, unless leak can be stopped safely. Eliminate all ignition sources as far as possible. Store locked up.

DANGER 250 ml

NOTICE

COLOR

YOUR WAY TO BETTER LABELS

- 4" Wide Output
- Multi-Color Output
- Cut-Out Shapes & Text
- 20 second supply changes
- 5 ips Print Speed--Super Fast!
- Walk-up-and-print ease of use... anyone can do it!

ENCLOSURE-20
UPS SUBPANEL 6 ON BREAKER 41

480V 3Ø 60amp

SPEED
Lo Hi

#6 DIES

WVA

The New Standard in Safety & Facility Identification

When you need to create a safer, leaner and more productive workplace by communicating hazards, procedures and facility information at-a-glance – you need the power of a BBP[®]35 or BBP[®]37 sign and label printer.

With multi-color printing, shape-cutting capabilities and fast printing, you can color your way to an improved workplace by creating effective visuals right at your own facility and right when you need them. Once you start creating safety and facility identification that makes an impact, you'll never know how you lived without one of these printers.

Visit BradyID.com/bbp37 to learn more!

| Catalog # | Description |
|-----------|--|
| BBP35 | BBP35 Multicolor Sign & Label Printer |
| BBP37 | BBP37 Color & Cut Sign & Label Printer |



BBP[®]37
COLOR & CUT
SIGN & LABEL PRINTER

BBP[®]35
MULTICOLOR SIGN & LABEL PRINTER

USA
Customer Service: 1-888-272-3946
Inside Sales: 1-888-311-0775
BradyID.com

Canada
Customer Service: 1-800-263-6179
BradyCanada.ca

Mexico
Customer Service: 1-800-262-7777
Inside Sales: 1-800-262-7777 ext 177
BradyLatinAmerica.com

 **BRADY**
WHEN PERFORMANCE MATTERS MOST™